

BELLEVUE
ARCHITECTURAL

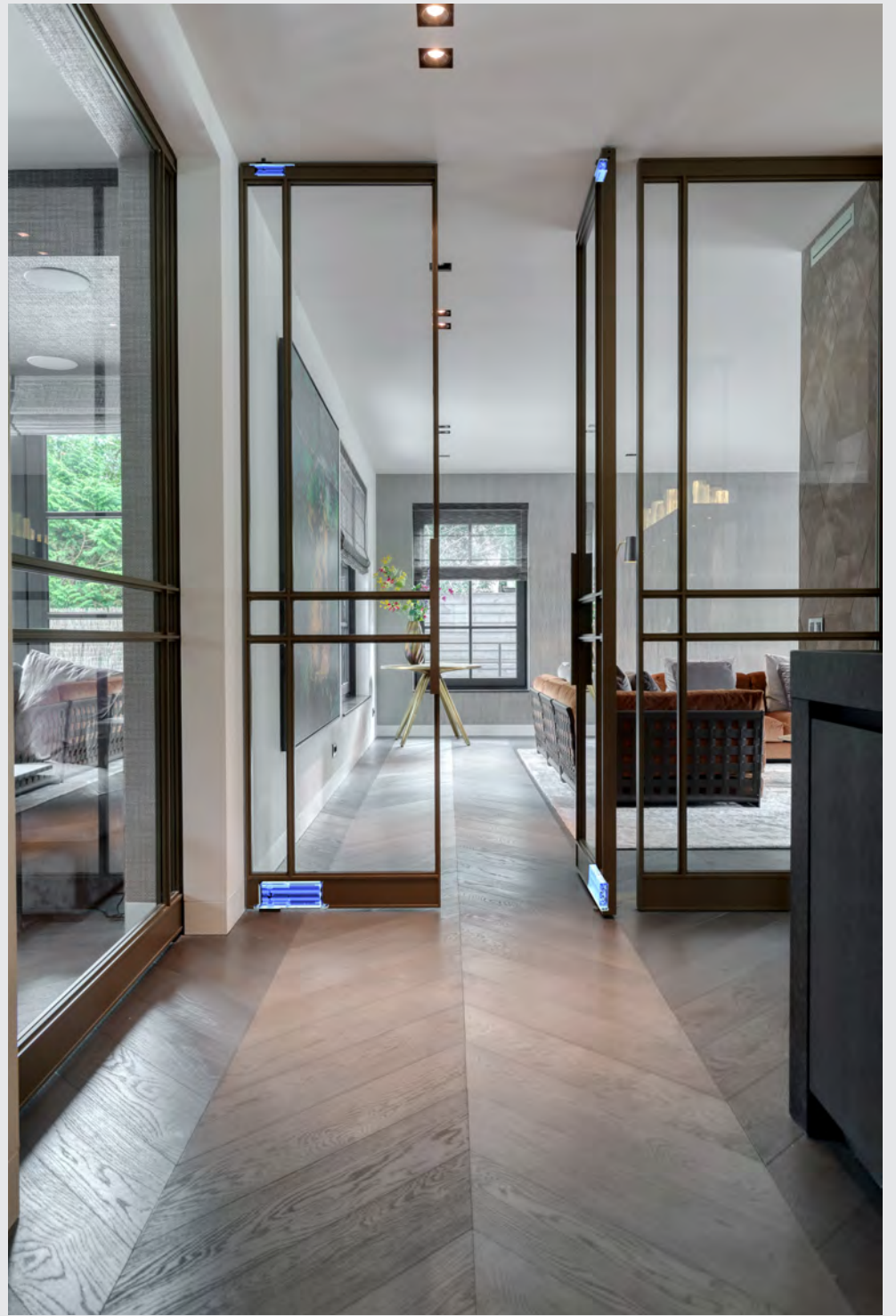
FritsJurgens®

FULLY CONCEALD PIVOT SYSTEMS

Max door weight: 500kg

- System M+
- System Fx
- System One
- 40 & 70mm Top pivot
- Reverse Top pivot
- Flush Floor Plates
- Accessories

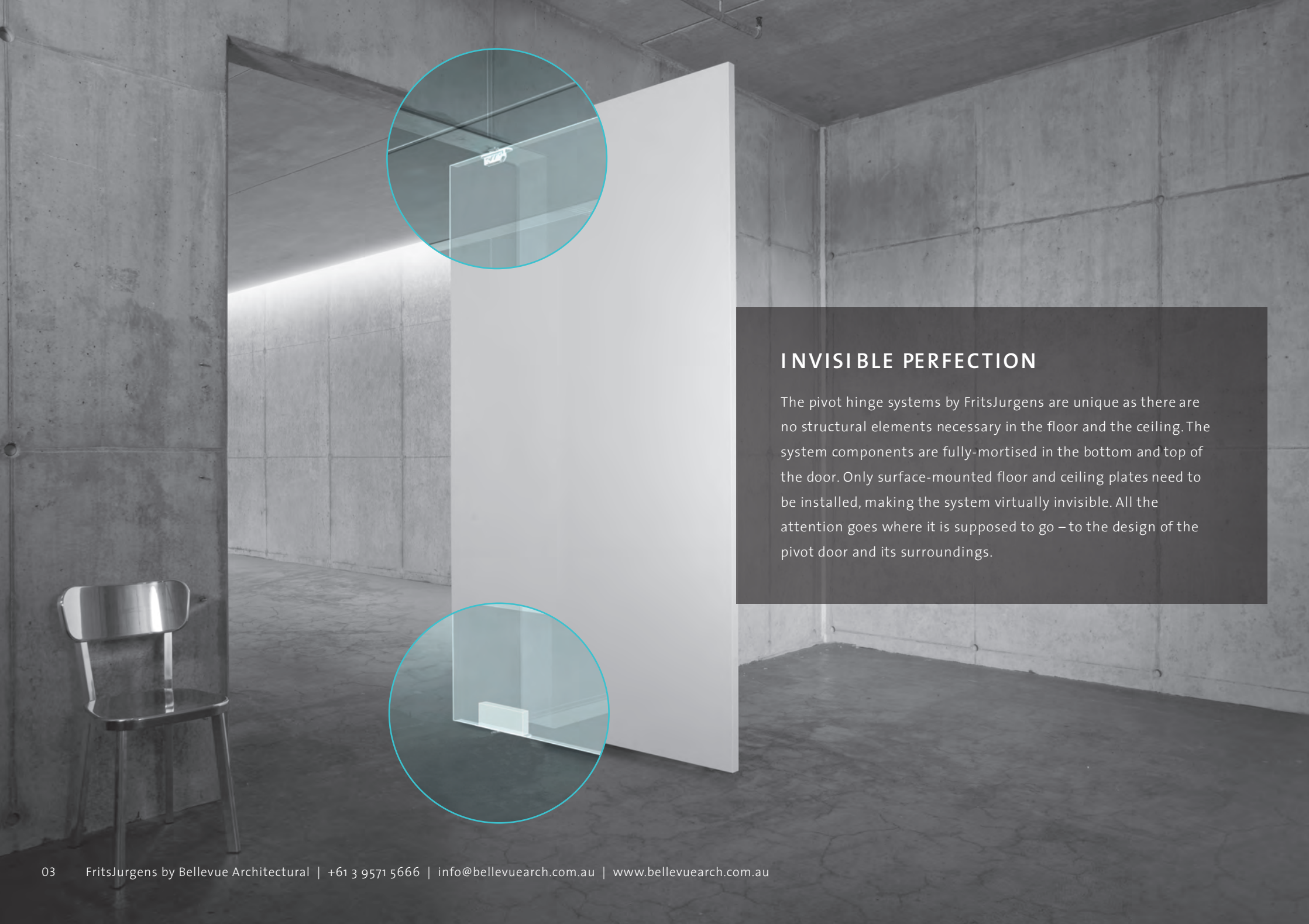
Designed & Made in The Netherlands



INDEX

01	02	03	04
Why FritsJurgens?	System specifications	System M+ Self closing 90 / 180° swing	System Fx Free-swinging & hold open
Invisible perfection 3	Positioning of the systems 7	Specifications & Control 16	Specifications & Rotation 28
Unlimited design 4	Min. 40/50 mm door thickness 7	System M+ Adjustment & Components 17	Technical drawings 29
Motion 5	Compare all systems 8	Design options Floor Plates 18	Specification codes 30
Timeless quality 6	System M+ Functions, Movement, Variants 9	Model selector 19	
	System Fx Functions, Movement, Variants 10	Specification codes 21	
	System One Functions, Movement 11	FJSM32+ & M42+ using a 70mm top pivot 22	
	8mm into the floor 13	FJSM32+ & M42+ using a 40mm top pivot 24	
05	06	07	
System One Free-swinging	Door specifications	Accessories	
Specifications & Rotation 31	Gaps around the door 41	Top pivot reversed 44	
Technical drawings 34	Pressure Load 42	Flush magnets 45	
Specification codes 35	Lateral force 43	Top pivot - Cable grommet 46	
		Hexagon guide 48	
		Axle wrench 49	
		Flush floor plates 50	
		Sub-strata base plate & packers 51	
		Athmer pivot drop seal L15/30 53	

Do you have any questions? Please do not hesitate to contact us.



INVISIBLE PERFECTION

The pivot hinge systems by FritsJurgens are unique as there are no structural elements necessary in the floor and the ceiling. The system components are fully-mortised in the bottom and top of the door. Only surface-mounted floor and ceiling plates need to be installed, making the system virtually invisible. All the attention goes where it is supposed to go – to the design of the pivot door and its surroundings.



UNLIMITED DESIGN

As a professional, you want to create more than just a door. You want to create a design statement. With a FritsJurgens pivot hinge design possibilities are unlimited and, the movement of the door is fluid, whether your door weighs 20 kg or 500 kg.

FritsJurgens pivot hinges are ideal for all kinds of pivot doors – large or small, light or heavy, interior or exterior. Whether in residential or commercial environments, almost any material is possible for your pivot door.

Meeting Centre
Reception
South Tower
Centre Building
Toilets
Parking
Auditorium
North Tower



MOTION

Power becomes control

Why constrain power when you can convert it into control? Motion technology puts hydraulic power to use by turning it into a controlled, smooth door movement. This is what makes Motion technology unique. In System M+ the movement of the pivot door is created and controlled by Motion. In heavy and light doors - unabridged power - full control.



TIMELESS QUALITY

FritsJurgens pivot hinges are virtually indestructible. Built from high-performance materials, the systems are maintenance-free.

Our rigorous testing shows that even after 1 million cycles our systems continue to perform as they were designed; perfectly balancing technology, quality and aesthetics.



SYSTEM COMPARISON PRODUCT SELECTOR

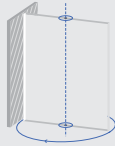
1 Select hinge placement



SIDE PLACEMENT

Compatible systems:

System One
System FX
System M+



MIDDLE PLACEMENT

Compatible systems:

System One
System FX

2 Select the desired function

Free swing - System One

Hold positions - System Fx

Damper Control - System M+

30° Speed Control - System M+

Latch Control - System M+

3 Discover top pivot

Standard top pivot (70 mm) - System One, System FX & System M+

Maximum clear width (40 mm) - System One

4 Discover bottom pivot and its class based on:

Door width

Pivot point

Door weight

5 Select hinge plate

Select application type:

Surface mounted (all bottom systems)

Flush mounted (Suitable for all systems)

Select the shape type: Narrow or round

(all bottom systems)

Select the finish: Stainless steel (all bottom systems)




Black (System M+)

6 Select accessories

Floorplate - Stainless steel or black

Axle Wrench - System M+

Hexagon Guide - 1 m or 2 m

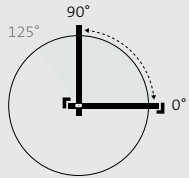
	SYSTEM M+	SYSTEM FX	SYSTEM ONE
FEATURES			
Rotation	90° & 180° Rotation	90°, 180° & Revolving	90°, 180° & Revolving
Hold position	Soft fix at -90° and 90°	Solid fixed at every 90°	-
Free swing	-	✓	✓
Self-closing	✓	-	-
Double acting	✓	✓	✓
Single acting	✓	✓	✓
Door frames/jamb	✓	✓	✓
Door weight	20 - 500 kg	20 - 500 kg	0 - 500 kg
MOVEMENT ADJUSTABILITY			
Damper Control	✓	-	-
30° Speed Control	✓	-	-
Latch Control	✓	-	-
SPECIFICATIONS			
Weight classes	8 classes, AA-G	3 Class, A, C & G	1 Class, O
Dimensions	M32+: 284,8 x 32 x 99,6 mm M42+: 308,2 x 42 x 112,7 mm	210 x 32 x 38 mm	160 x 32 x 39 mm
Operating principle	Hydraulic	Mechanical	Mechanical
Material	Stainless Steel Anodized Aluminum	Stainless Steel Anodized Aluminum	Stainless Steel Anodized Aluminum

Features

System M+

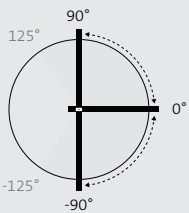
This adjustable pivot hinge brings Latch Control to ensure proper latching, guaranteed control over the movement of doors from 20 kg to 500 kg, and extra adjustability for the movement of the door.

Rotation



Single-acting

The pivot door can only be opened towards a single side, enforced by an external stop such as the door frame. The grey area in the diagram indicates the zone (from 125° to 0°) where the door self-closes towards the closed position.

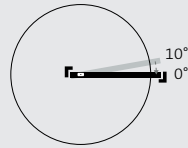


Double-acting

The pivot door can be opened towards both sides. The grey area in the diagram indicates the zone (from 125° to 125°) where the door self-closes towards the closed position.

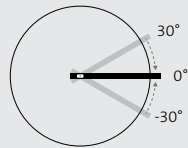
Movement

Thanks to Damper Control, 30° Speed Control and Latch Control, the movement of System M+ is fully adjustable.



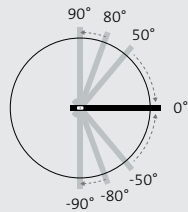
Latch Control

Accelerates the door shortly before closed position to ensure proper latching.



30° Speed Control

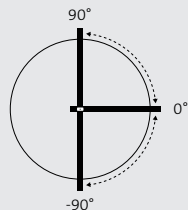
Ensures the door always closes gently, returning to its 0° position smoothly after opening for a smooth closing movement.



Damper Control

Hydraulic back-check (opening damping) for wall-protection and soft-close for a smooth closing movement.

Hold positions



Soft fix at -90° and 90°

The hold positions offer light resistance to help keep the pivot door in place.

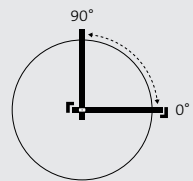


Features

System Fx

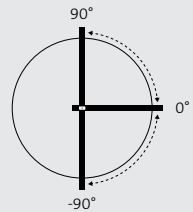
Featuring four extremely strong hold positions at 0°, 90°, 180° and 270°. System Fx delivers unparalleled strength and precision. Designed for interior doors, the sheer versatility of the system offers architects, interior designers, and door specialists the freedom to design whatever their architectural vision demands. System Fx is the ideal choice for side and middle placement in both residential and commercial locations.

Rotation



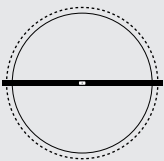
Single-acting

The pivot door can only be opened towards a single side. This is enforced by an external stop such as the door frame.



Double-acting

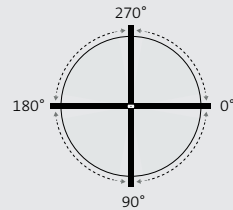
The pivot door can be opened towards both sides, with a hold position at 90° at either side.



Revolving

This FritsJurgens pivot system enables a door to revolve 360°.

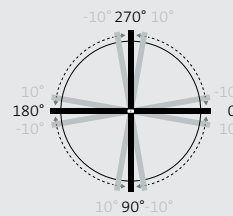
Movement



Free swing

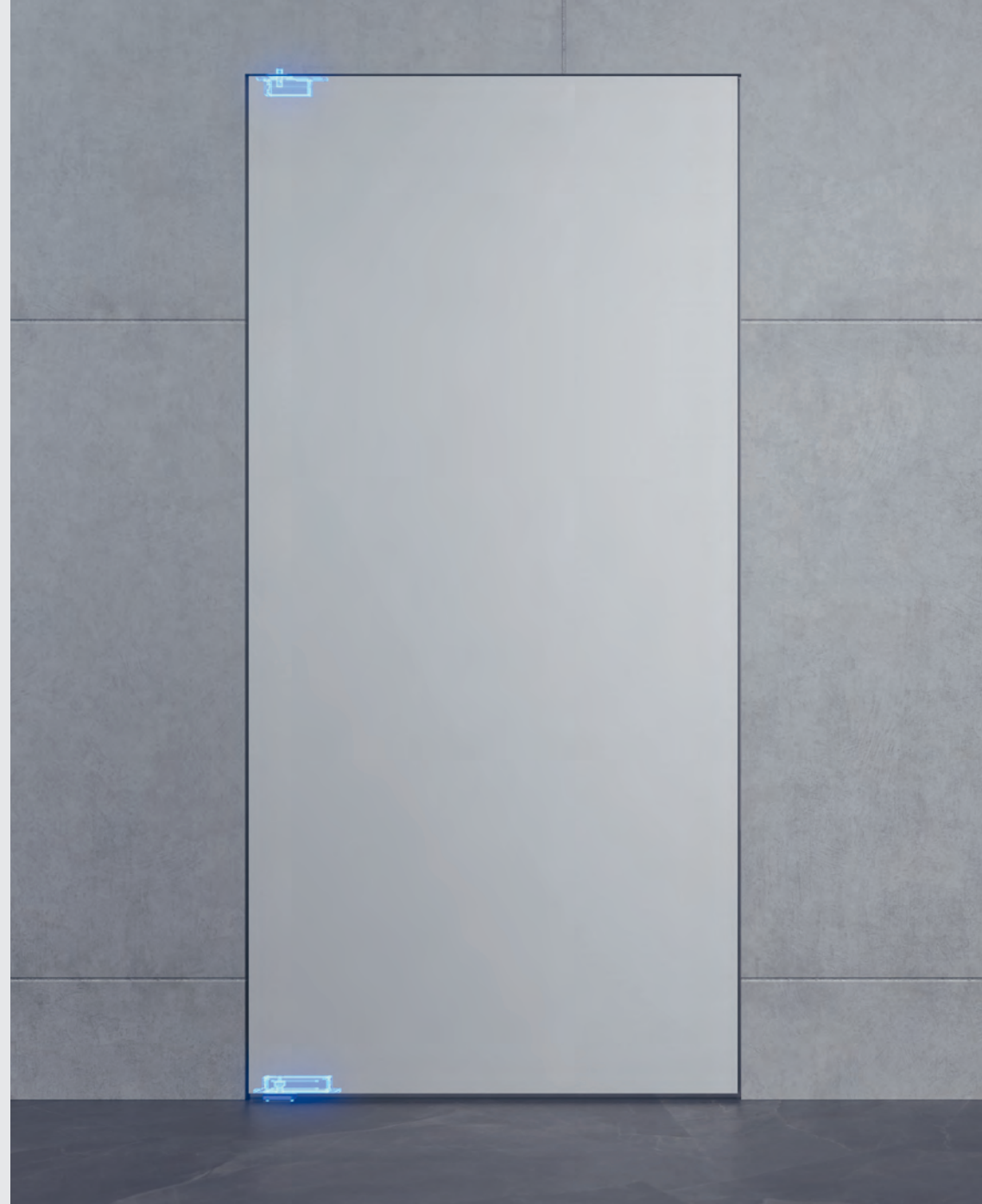
The system features a free swing between 10° and 80° between each hold position, ensuring smooth and effortless door movement.

Hold positions



Solid fix at every 90°

The door will guide itself back to the nearest hold position when it is within +10° or -10° of it. This hold position is strong and keeps the door securely in place.

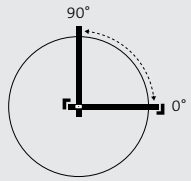


Features

System One

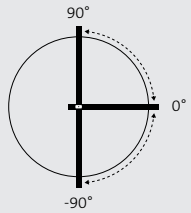
The most ideal pivot hinge for narrow profile doors. With a height of just 18 mm, this pivot hinge can be applied in a broad range of pivot door designs and applications.

Rotation



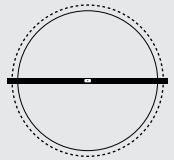
Single-acting

The pivot door can only be opened towards a single side, enforced by an external stop such as the door frame. The pivot door has no hold positions.



Double-acting

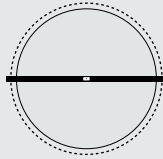
The pivot door can be opened towards both sides. It has no hold positions.



Revolving

This FritsJurgens pivot system enables a door to revolve 360°. It has no hold positions.

Movement



Free swing

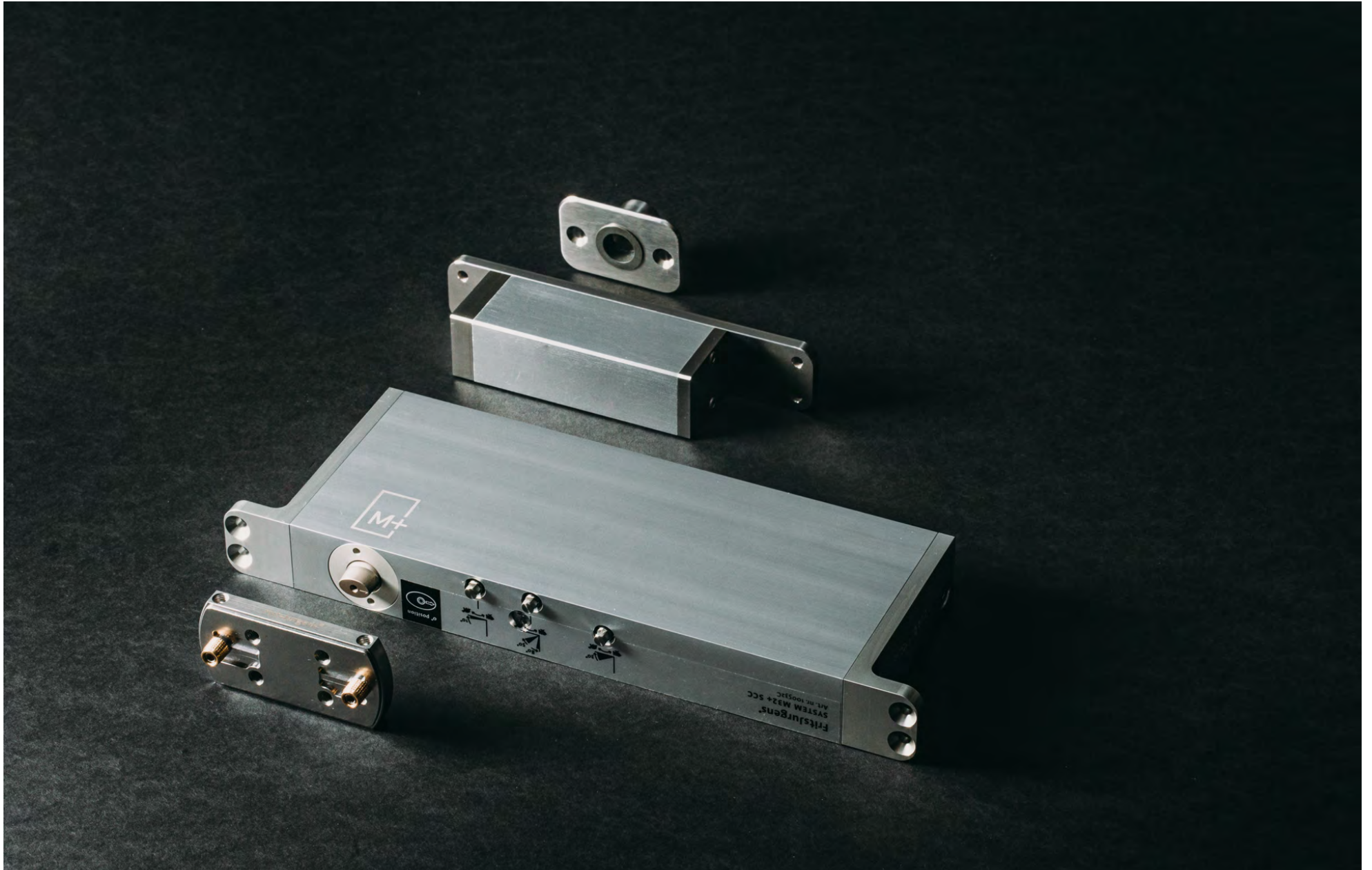
The pivot door moves manually and freely without self-closing functionality.



SYSTEM M+

System M+ is a self-closing pivot system that offers full control over door movement.

FRITSJURGENS SYSTEM M+



SYSTEM M+ | Recommended for use on single & double action doors

SYSTEM SPECIFICATIONS based on 70mm top pivot

Class	FJS/STM+70AASSS	
	FJS/STM+70ASSS	
	FJS/STM+70BSSS	see page 21 for ordering codes
	FJS/STM+70CSSS	
	FJS/STM+70DSSS	FJS/STM+70FSSS
	FJS/STM+70ESSS	FJS/STM+70GSSS
Dimensions	M32+ 294,8 x 32 x 99,6 mm	M42+ 308,2 x 42 x 112,7 mm
Weight	2,6 KG	3,6 KG
Material	Stainless steel Anodized aluminium	
Corrosion resistance	EN 1670 - class 5 (norm:0-5)	

DOOR SPECIFICATIONS

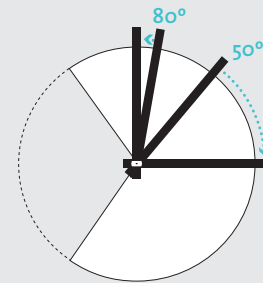
Door action	Double-action 180° rotation
	Single-action 90° rotation with door frames* <i>*Dueto Latch Control (see page 10)</i>
Hold positioning	Hold positions 90°, -90° and 0°
Weight capacity	20-500 KG (max bearing capacity of 500kg)
Door width	400 - 5000 mm
Door height	Unlimited
Pivot point	Min. 40mm from pivot point to short side
Min. door thickness	M32+ 40 & 70mm (AA-E)

DOOR MOVEMENT

Door movement	Self-closing from 125° and -125° to 0° DamperControl - Back-check for damping on opening, soft-close. 30°SpeedControl - Adjustable closing speed in last part of closing. Latch Control - Accelerates the door shortly before closed position to ensure proper latching. <i>All controls can be individually adjusted from the bottom of the door.</i>
---------------	-----------------------------------------------------------------------------------------------------------------------------------------------------------------------------------------------------------------------------------------------------------------------------------------------------------------------------------------------------------------------------------------

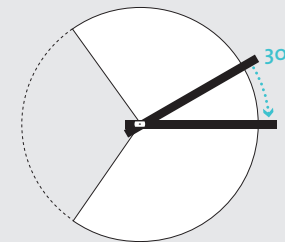
MOTION

DAMPER CONTROL



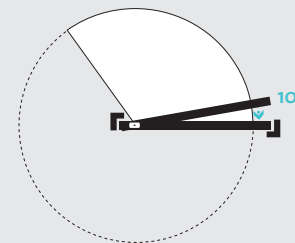
Damper Control has two functions. The hydraulic back-check protects the pivot door against touching the wall by providing adjustable resistance as the door approaches the 80° position. The closing damping makes the door close smoothly.

30° SPEED CONTROL



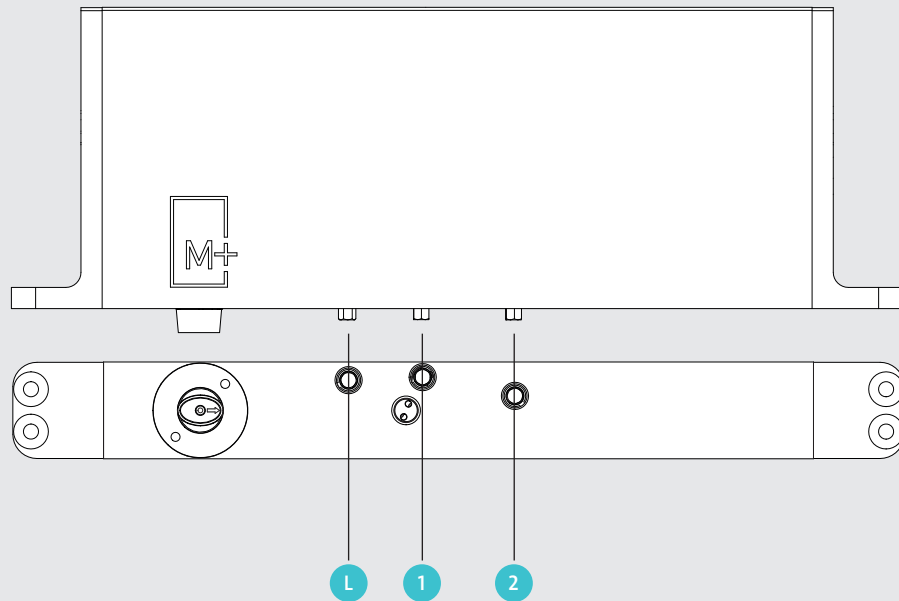
30° Speed Control allows you to fine-tune the speed of the pivot door through the last 30° of the closing movement.

LATCH CONTROL



Latch Control provides the ability to adjust the closing speed to latch the door properly. Latch Control enables the door to accelerate in the last 10° to ensure proper latching of the door.

SYSTEM M+ ADJUSTMENT POINTS WITH MOTION



- 1 **Damper Control** Ensures a smooth and elegant closing movement and protects your door from touching the wall (back-check).
- 2 **30° Speed Control** Allows you to determine the speed of the pivot door through the last part of the closing movement.
- L **Latch Control** Accelerates the door shortly before closed position to ensure proper latching.

SYSTEM M+ COMPONENTS

SYSTEM M+ 70mm

SYSTEM M+ 40mm

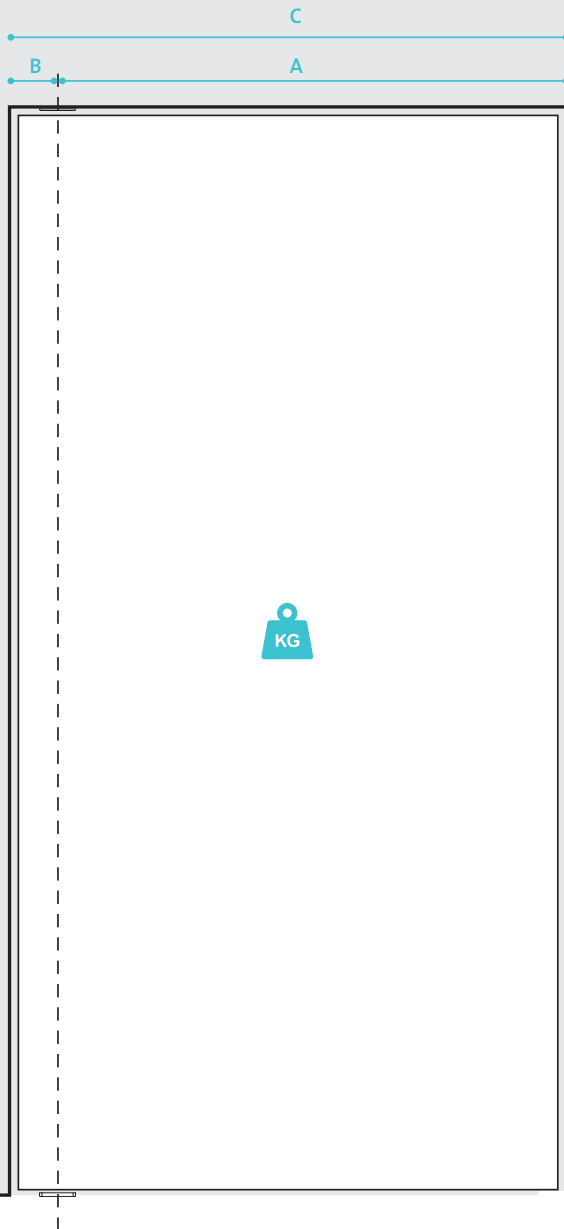


1. Ceiling plate
2. 40 or 70 mm top pivot
3. System M+
4. Standard square floor plate

System M+ is equipped with FlowMotion technology. FlowMotion technology puts hydraulic power to use by turning it into a controlled, smooth door movement.

FritsJurgens by Bellevue Architectural | +61 3 9571 5666 | info@bellevuearch.com.au | www.bellevuearch.com.au

SYSTEM M+ MODEL SELECTOR



To ensure the pivot system provides the appropriate movement for your door, System M+ is available in eight models suited to the weight and width of the door to ensure the door closes every time. There are no height limits on the door.

System M+ is suitable for pivot doors covering a weight range between 20 and 500kg (subject to the width and weight chart for guaranteed closing). The systems are suitable for single and double action doors. When combined with the door frames, the latch control ensures that the door closes properly.

Fully concealed, the minimum pivot point is 70mm from the edge of the door, this is movable to the midpoint of the door.

To maximise opening space for narrow doors, you can use a 40mm fixed pivot point version. This unit is visible on the edge of the door (top & bottom) only when the door is open.

EXAMPLE

Use the model selector charts on the following page:

Door specifications: Width: 1600mm, height: 3200mm, weight: 165kg.

The distance between the pivot point and the side of the door is 70mm

1. Check the door width
C = 1600 mm
2. Determine the distance of pivot point to the latch side of the door:
C minus B = A 1530mm

1. Fill in the weight
KG = 165 kg

The following system suits this door:

FJS/STM+70DSSS

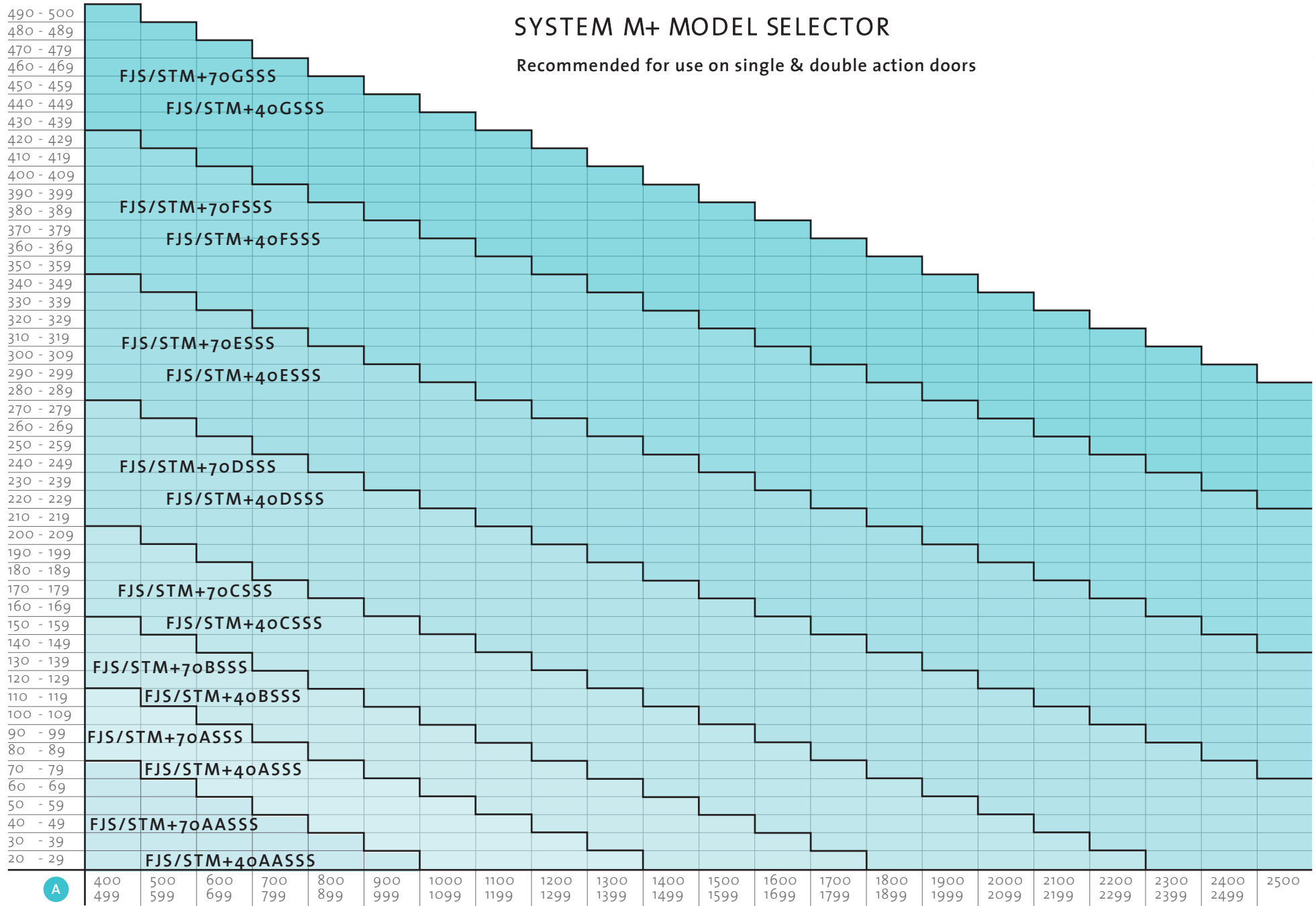
Does your pivot door have other measurements than shown here? FritsJurgens has an on-site testing facility which enables us to determine whether our systems are suitable for your situation.

FritsJurgens by Bellevue Architectural | +61 3 9571 5666 | info@bellevuearch.com.au | www.bellevuearch.com.au



SYSTEM M+ MODEL SELECTOR

Recommended for use on single & double action doors



70mm Pivot point specification codes



Kit supplied with **standard** floor plate

Kit finish: Satin stainless steel

Kit finish: Black

FJS/STM+70AASSS
 FJS/STM+70ASSS
 FJS/STM+70BSSS
 FJS/STM+70CSSS
 FJS/STM+70DSSS
 FJS/STM+70ESSS
 FJS/STM+70FSSS
 FJS/STM+70GSSS

FJS/STM+70AASBK
 FJS/STM+70ASBK
 FJS/STM+70BSBK
 FJS/STM+70CSBK
 FJS/STM+70DSBK
 FJS/STM+70ESBK
 FJS/STM+70FSBK
 FJS/STM+70GSBK



Kit supplied with **flush** floor plate

Kit finish: Satin stainless steel

Kit finish: Black

FJS/STM+70AAFSSS
 FJS/STM+70AFSSS
 FJS/STM+70BFSSS
 FJS/STM+70CFSSS
 FJS/STM+70DFSSS
 FJS/STM+70EFSSS
 FJS/STM+70FFSSS
 FJS/STM+70GFSSS

FJS/STM+70AAFSBK
 FJS/STM+70AFSBK
 FJS/STM+70BFSBK
 FJS/STM+70CFSBK
 FJS/STM+70DFSBK
 FJS/STM+70EFSBK
 FJS/STM+70FFSBK
 FJS/STM+70GFSBK



40mm Pivot point specification codes



Kit supplied with **standard** floor plate

Kit finish: Satin stainless steel

Kit finish: Black

FJS/STM+40AASSS
 FJS/STM+40ASSS
 FJS/STM+40BSSS
 FJS/STM+40CSSS
 FJS/STM+40DSSS
 FJS/STM+40ESSS
 FJS/STM+40FSSS
 FJS/STM+40GSSS

FJS/STM+40AASBK
 FJS/STM+40ASBK
 FJS/STM+40BSBK
 FJS/STM+40CSBK
 FJS/STM+40DSBK
 FJS/STM+40ESBK
 FJS/STM+40FSBK
 FJS/STM+40GSBK



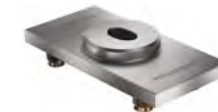
Kit supplied with **flush** floor plate

Kit finish: Satin stainless steel

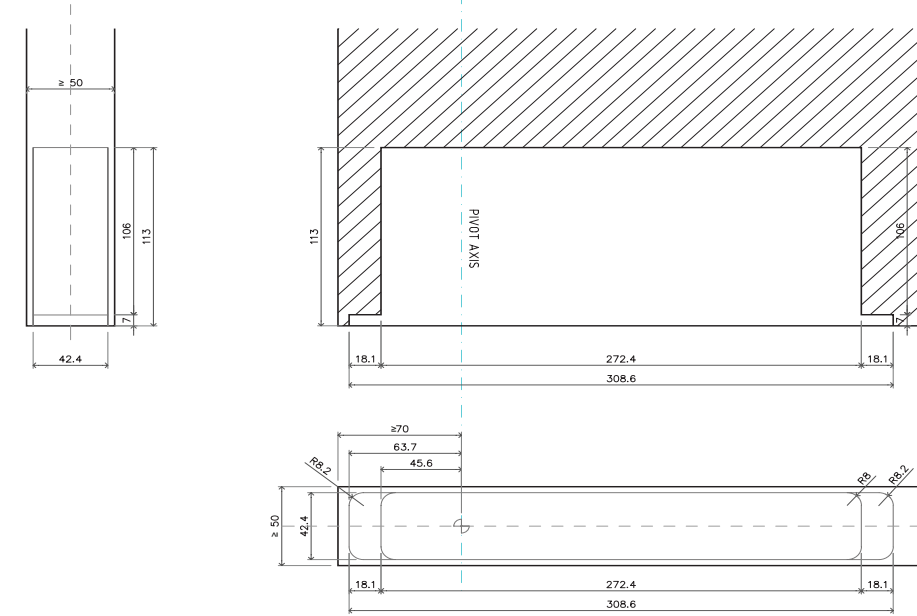
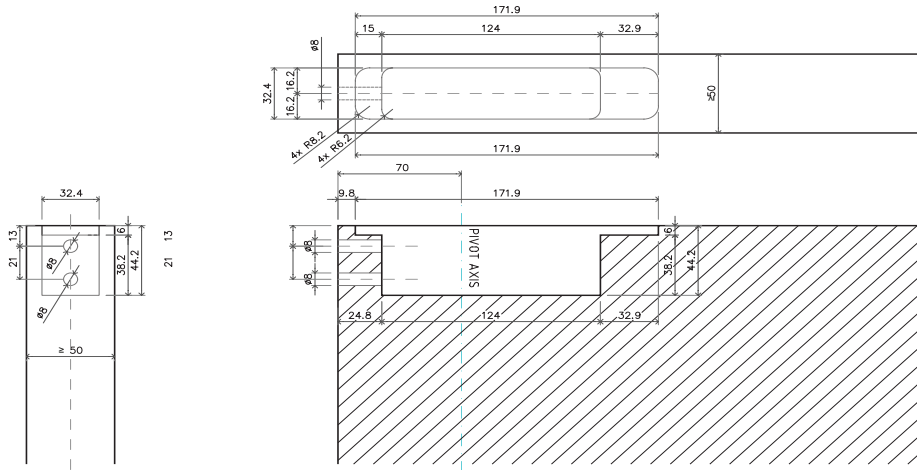
Kit finish: Black

FJS/STM+40AAFSSS
 FJS/STM+40AFSSS
 FJS/STM+40BFSSS
 FJS/STM+40CFSSS
 FJS/STM+40DFSSS
 FJS/STM+40EFSSS
 FJS/STM+40FFSSS
 FJS/STM+40GFSSS

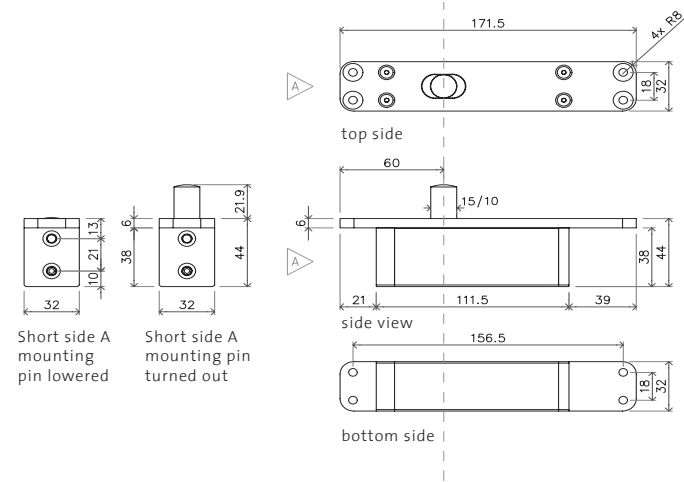
FJS/STM+40AAFSBK
 FJS/STM+40AFSBK
 FJS/STM+40BFSBK
 FJS/STM+40CFSBK
 FJS/STM+40DFSBK
 FJS/STM+40EFSBK
 FJS/STM+40FFSBK
 FJS/STM+40GFSBK



MILLING SYSTEM M+ 70 F & G

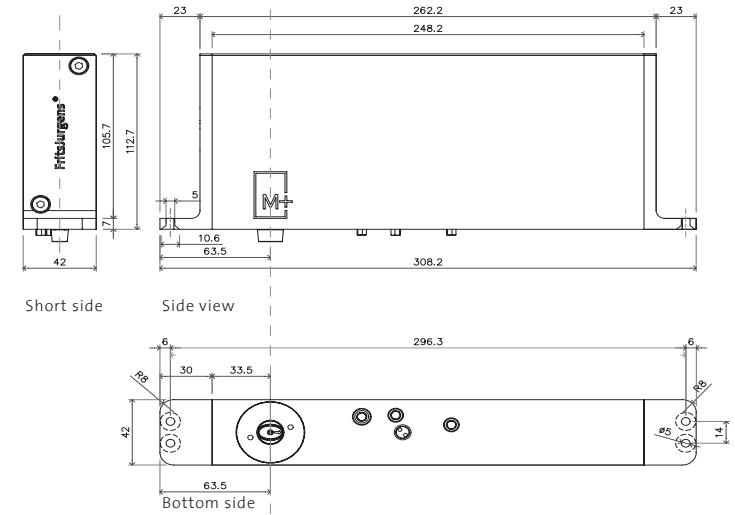


COMPONENTS SYSTEM M+ 70 F & G



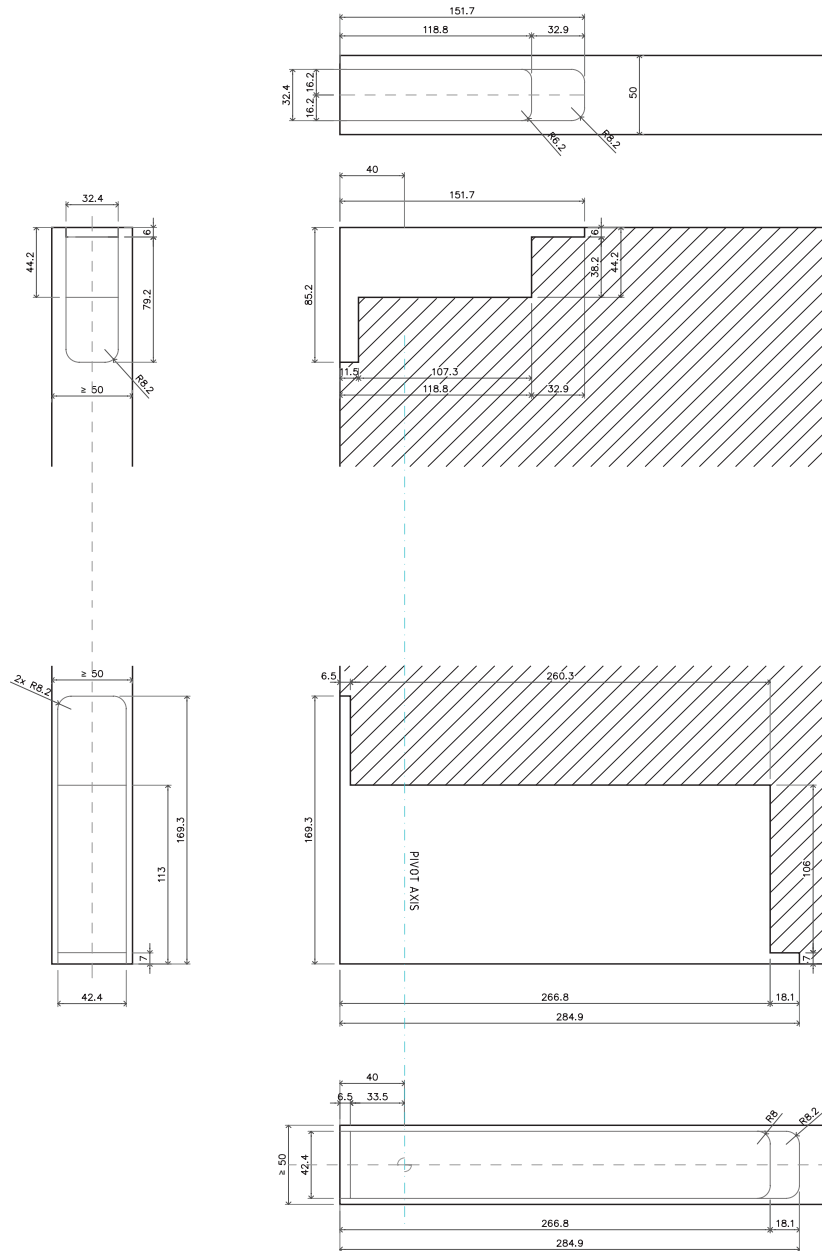
Top Pivot 70 mm - Class B or G

Class B AA, +A, +B
Class G +C - G

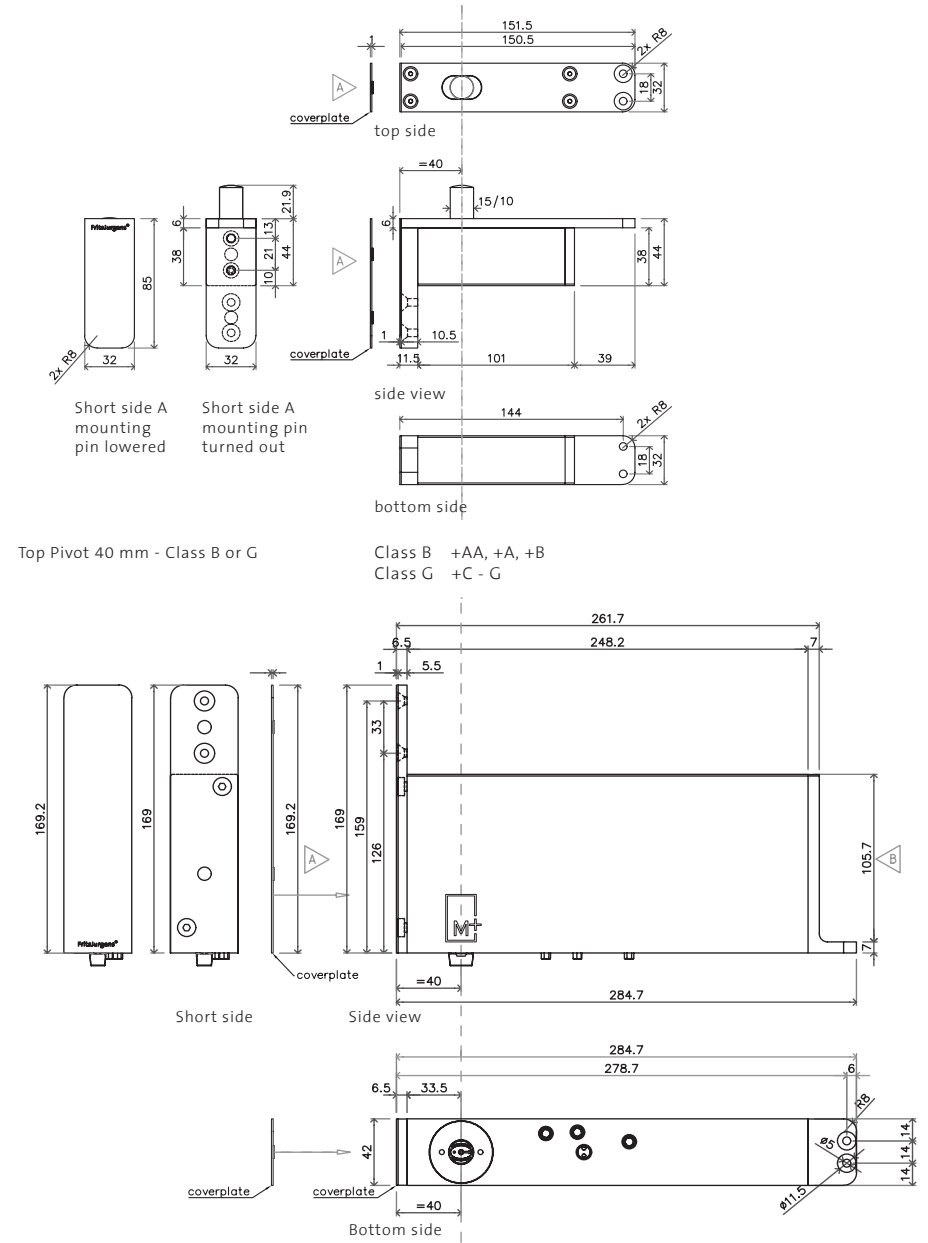


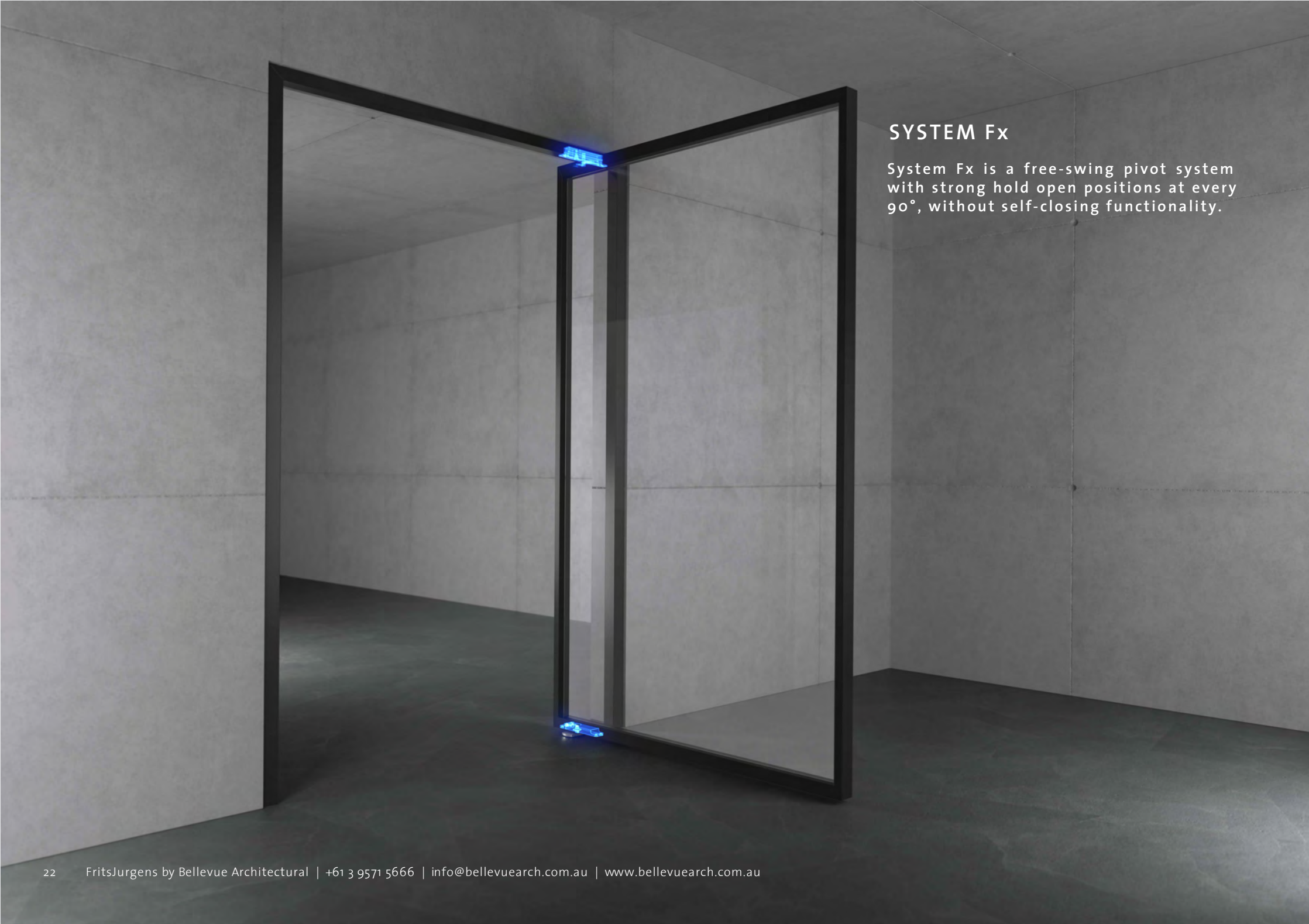
System M+ 70 mm - Class F and G

MILLING SYSTEM M+ 40 F & G



COMPONENTS SYSTEM M+ 40 F & G





SYSTEM Fx

System Fx is a free-swing pivot system with strong hold open positions at every 90°, without self-closing functionality.

FRITSJURGENS SYSTEM Fx | Free-swinging with hold open



SYSTEM Fx TECHNICAL SPECIFICATION

FEATURES

Rotation	Revolving: 360°, Double-acting: 180°, Single-acting: 90°
Hold position	0°, 90°, 180° and 270°
Free swing	Between 10° and 80° of each 90° quadrant
Self-closing (non-adjustable)	Between 0° and 10° & 80° and 90° of each 90° quadrant
For double acting doors	Yes
For single acting doors	Yes
For door frame/jambs for stops	Yes (note self-close non-adaptability impact)
Door weight	20 - 500 kg

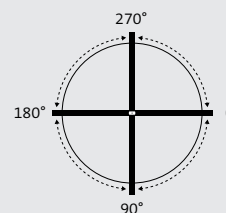
SPECIFICATION

Weight class	3 class, A, C & G
Pivot point possibilities	40 mm, 70 mm, offset, max. middle of the width
Floor plate compatibility	Floor plate squared non adjustable & all floor plates of System M+ family
Top pivot compatibility	TP-40, TP-70, TP-R

GAPS OVERVIEW

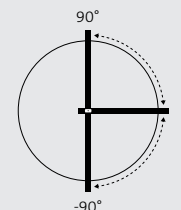
Gap below the door	7 mm (Flush floor plate) or 11 mm (Standard floor plate)
Required gap above the door	4 mm - 10 mm
Material of the product	Stainless steel, anodized aluminium
Minimum gaps left/right	Depends on door thickness, see Gap Calculator

Rotation



Revolving

Revolving means that the pivot door can rotate a full 360°, with hold positions at 0°, 90°, 180°, and 270°.



Double-acting

Double-acting means that the pivot door can be opened towards both sides, with a hold position at 90° at either side.

70mm Pivot point specification codes



Kit finish: Satin stainless steel

FJS/STFX70ASSS - Class A: 20 - 119Kg
FJS/STFX70CSSS - Class C: 120 - 209Kg



Kit finish: Black

FJS/STFX70ASBK - Class A: 20 - 119Kg
FJS/STFX70CSBK - Class C: 120 - 209Kg

40mm Pivot point specification codes



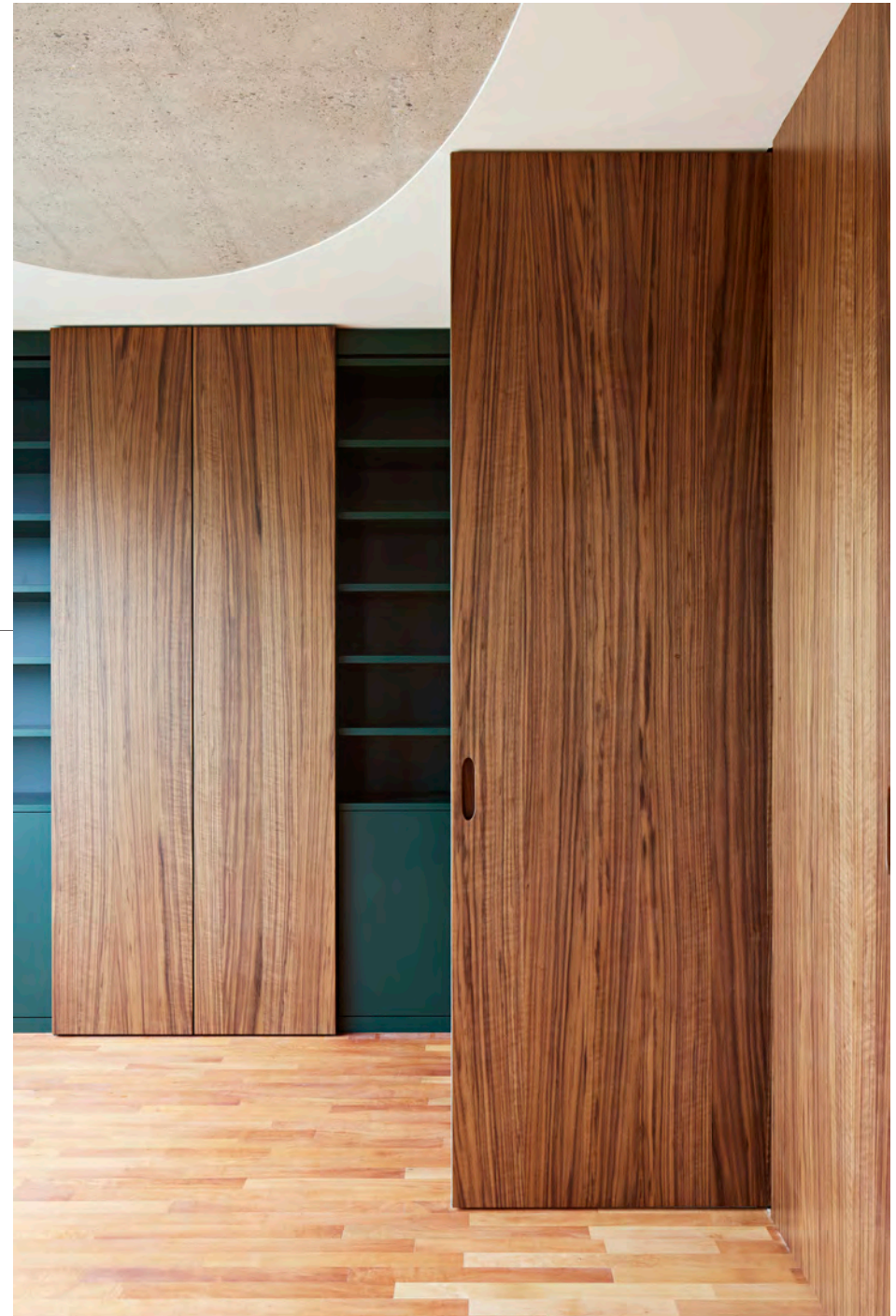
Kit finish: Satin stainless steel

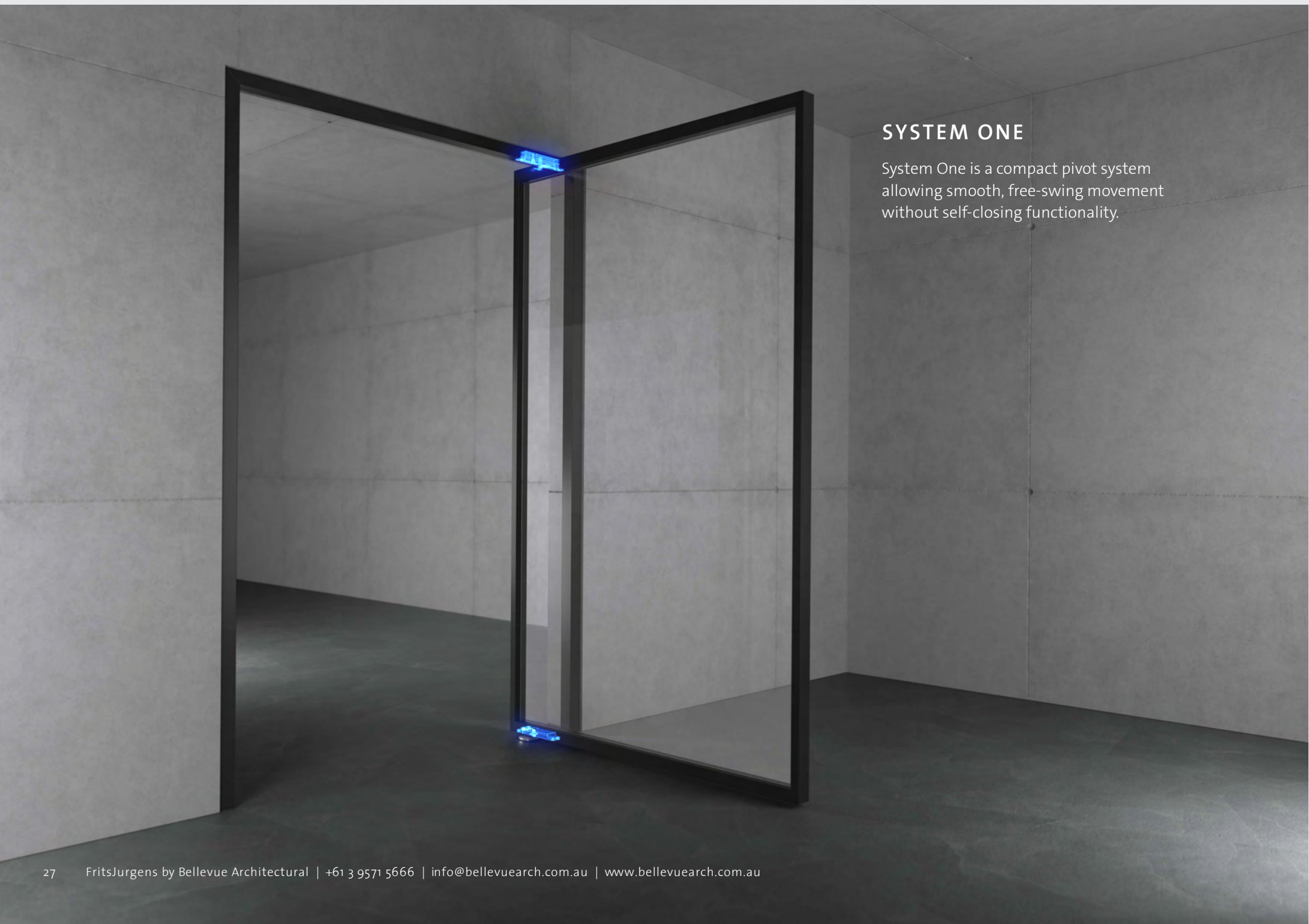
FJS/STFX40ASSS - Class A: 20 - 119Kg
FJS/STFX40CSSS - Class C: 120 - 209Kg



Kit finish: Black

FJS/STFX40ASBK - Class A: 20 - 119Kg
FJS/STFX40CSBK - Class C: 120 - 209Kg





SYSTEM ONE

System One is a compact pivot system allowing smooth, free-swing movement without self-closing functionality.

FRITSJURGENS SYSTEM ONE | Free-swinging



SYSTEM ONE TECHNICAL SPECIFICATION

FEATURES

Rotation	Revolving: 360°, Double-acting: 180°, Single-acting: 90°
Hold position	No
Free swing	Yes
Self-closing	No
For double acting doors	Yes
For single acting doors	Yes
For door frame/jamb	Yes
Door weight	0 - 500 kg

SPECIFICATION

Weight class	1 class, G
Pivot point possibilities	40 mm, 70 mm, offset, max. middle of the width
Floor plate compatibility	Floor plate – squared non adjustable & all floor plates of System M family
Top pivot compatibility	TP-40, TP-70, TP-R

GAPS OVERVIEW

Gap below the door	7 mm (Flush floor plate) or 11 mm (Standard floor plate)
Required gap above the door	4 mm - 10 mm
Material of the product	Stainless steel, anodized aluminum
Minimum gaps left/right	Depends on door thickness, see Gap Calculator

SYSTEM ONE COMPONENTS

1. Ceiling plate
2. Top pivot 70
3. System One
4. Floor plate



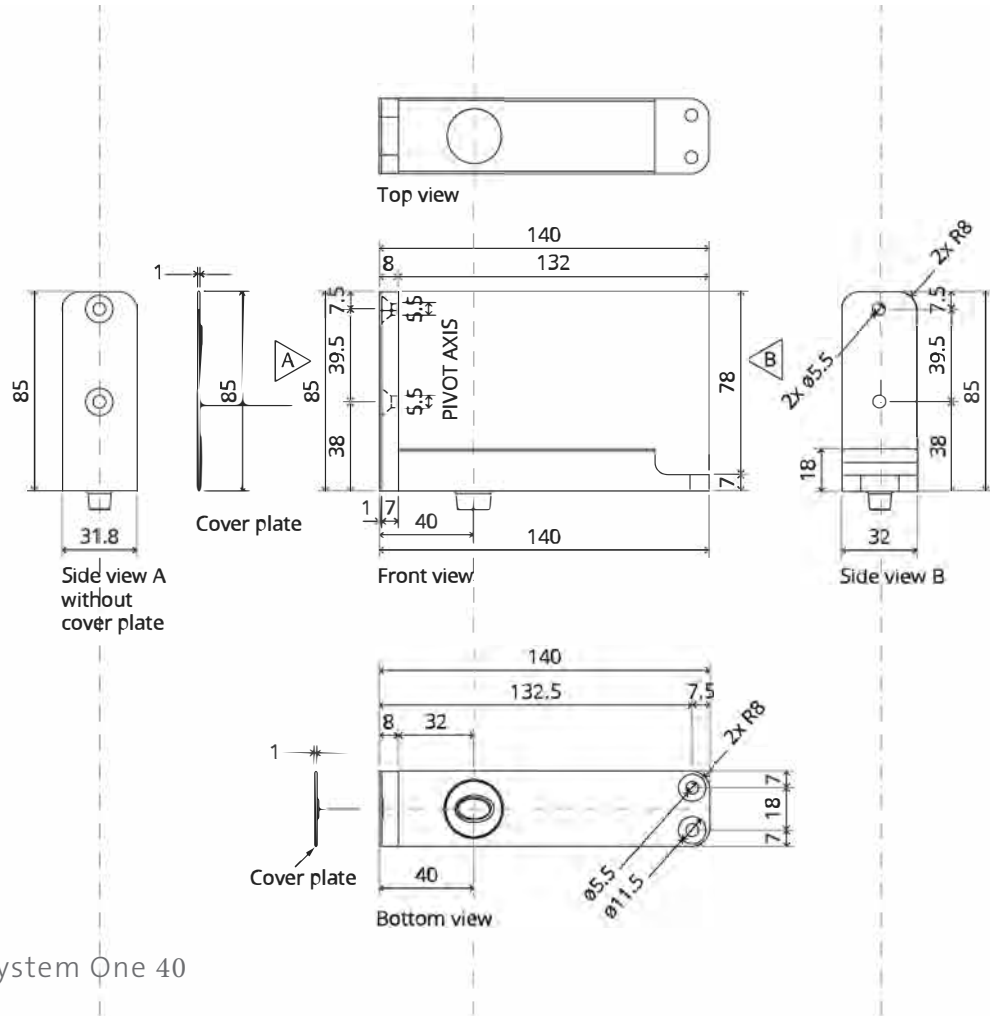
Ceiling plate and floor plate in stainless steel



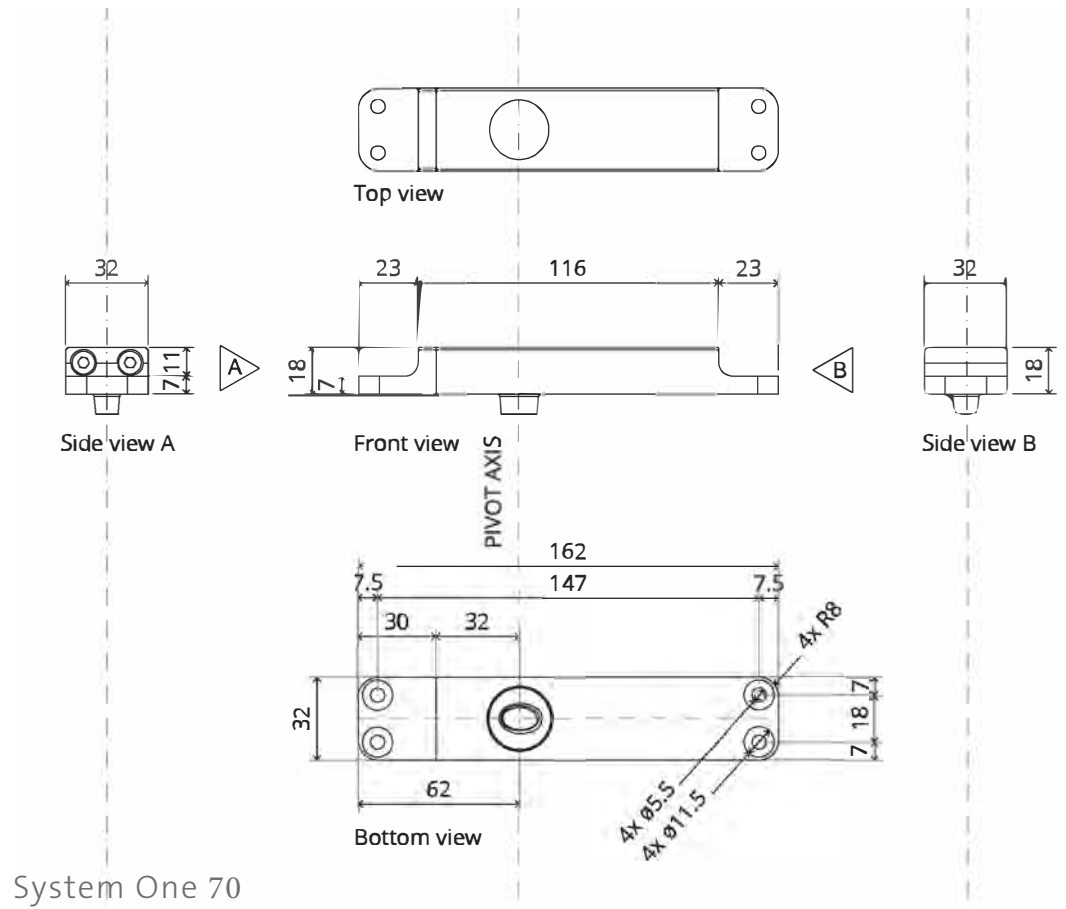
System One excels in its simplicity: one pivot point with a load-bearing capacity of 500 kg. System One allows 360° rotation.

TECHNICAL DRAWING SYSTEM ONE | Free - swinging

COMPONENTS



System One 40



System One 70

70mm Pivot point specification codes



Kit finish: Satin stainless steel

FJS/STONE70GSNSS - full kit with standard floor plate
FJS/STONE70GFNSS - full kit with flush floor plate



Kit finish: Black

FJS/STONE70GSNBK - full kit with standard floor plate
FJS/STONE70GFNBK - full kit with flush floor plate

40mm Pivot point specification codes



Kit finish: Satin stainless steel

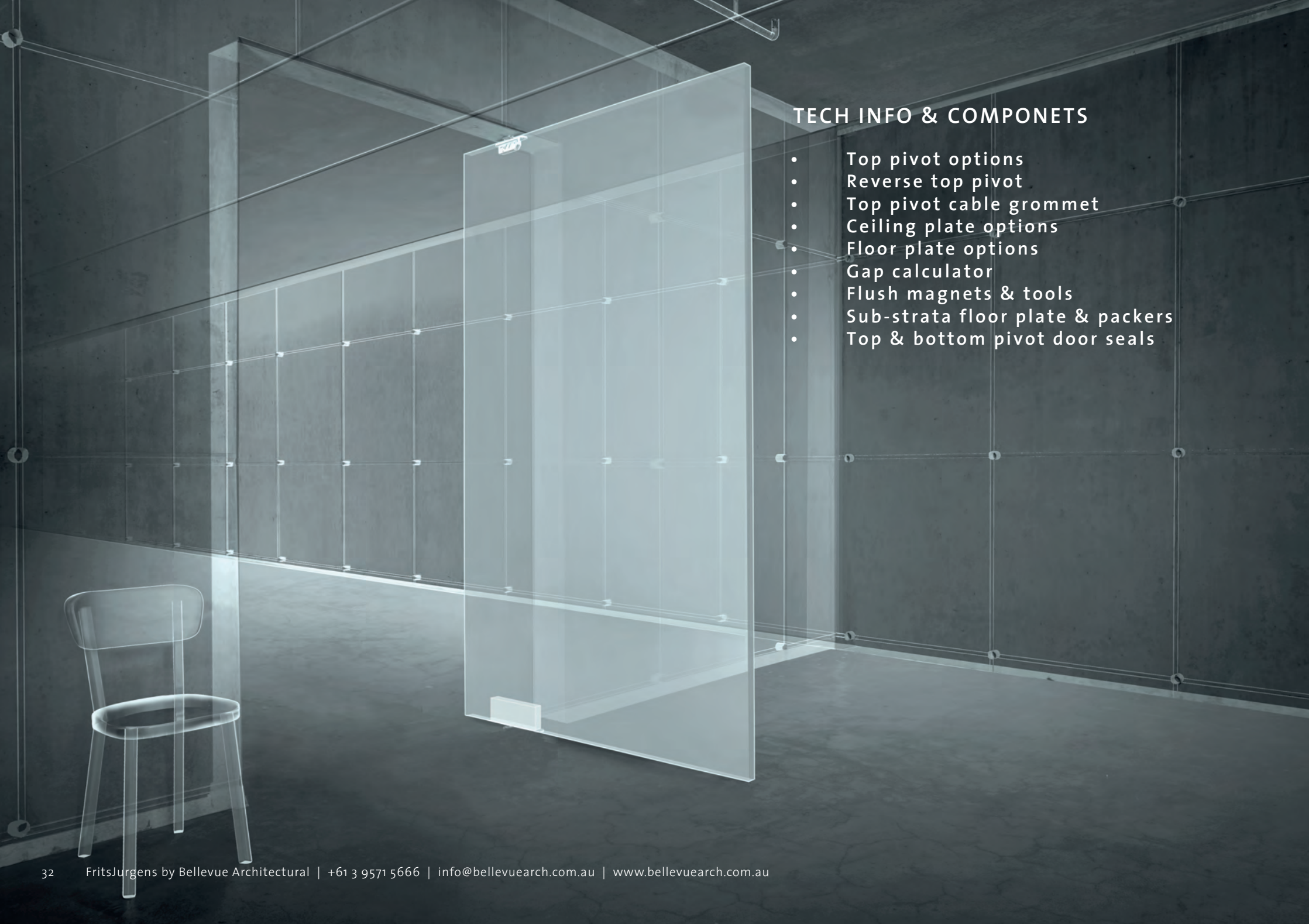
FJS/STONE40GSNSS - full kit with standard floor plate
FJS/STONE40GFNSS - full kit with flush floor plate



Kit finish: Black

FJS/STONE40GSNBK - full kit with standard floor plate
FJS/STONE40GFNBK - full kit with flush floor plate

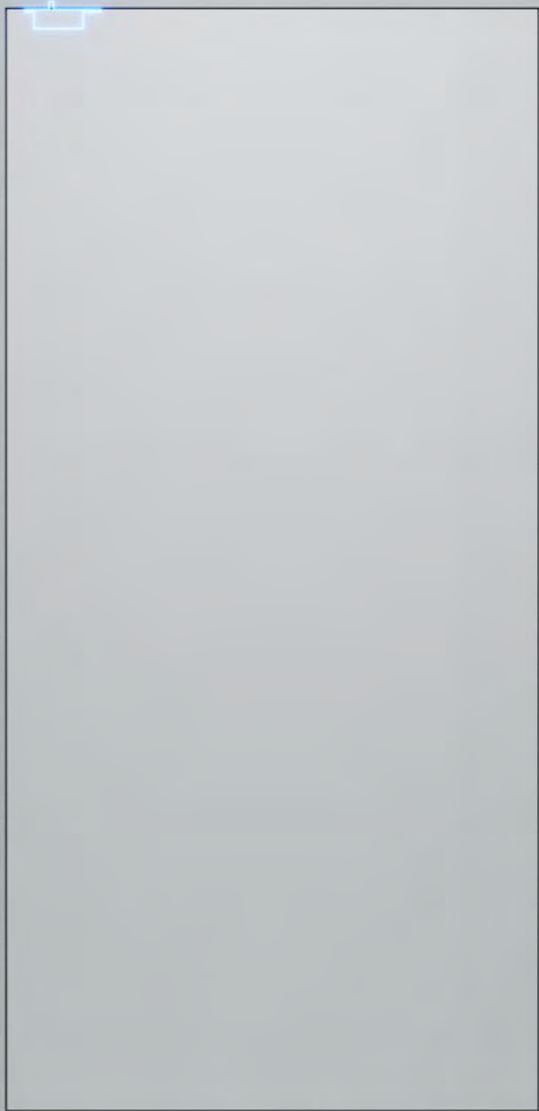




TECH INFO & COMPONENTS

- Top pivot options
- Reverse top pivot
- Top pivot cable grommet
- Ceiling plate options
- Floor plate options
- Gap calculator
- Flush magnets & tools
- Sub-strata floor plate & packers
- Top & bottom pivot door seals

Top Pivots



While the bottom pivot forms the core of every FritsJurgens system, the top pivot is its essential counterpart. Installed in the top of the door or ceiling, it defines the pivot point and keeps the door precisely aligned throughout its movement.

40 MM



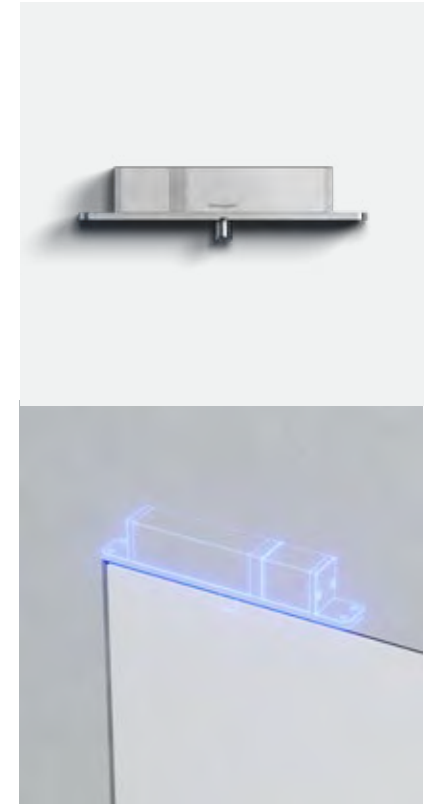
Thanks to the fixed pivot point at 40 mm, this top pivot makes the most of any space. The top pivot is as close as possible to the side of the door.

70 MM



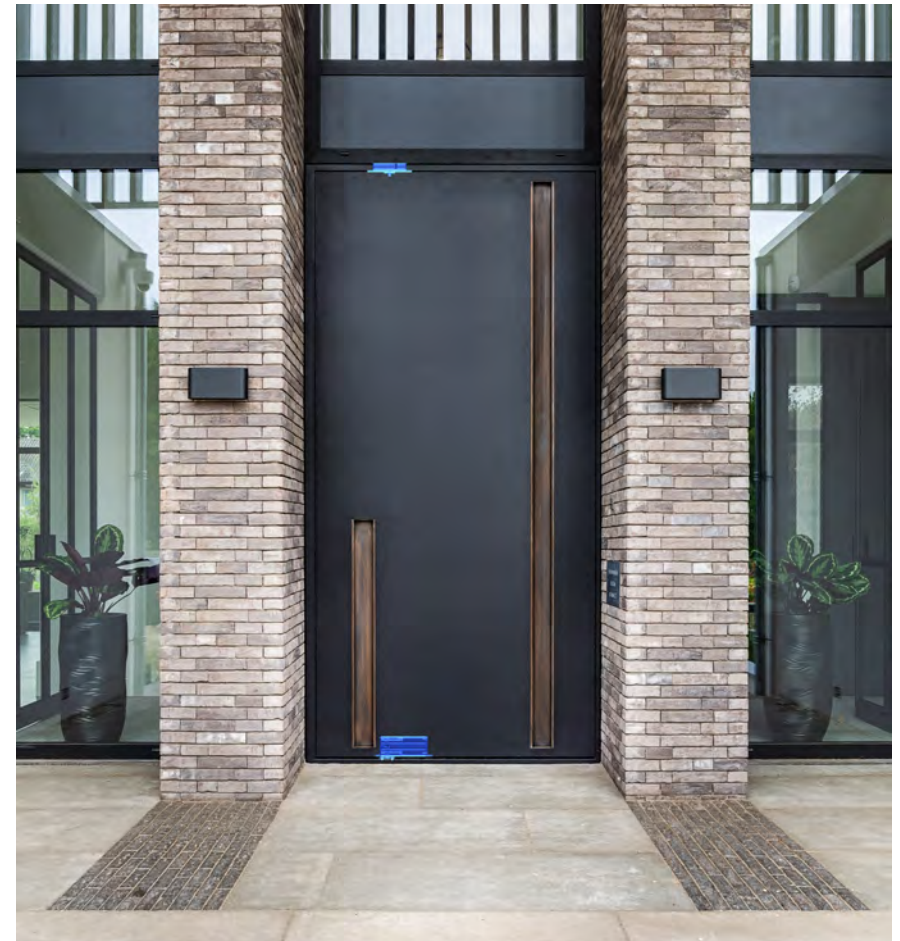
The ability to position the system 70 mm from the door's side reduces unused space while retaining the beautiful, distinctive pivot door movement. This top pivot can be placed in any position between 70 mm and the center of the door.

REVERSED



This top pivot is slightly different from all the others: Top pivot Reversed can be placed in the head jamb or ceiling.

Top Pivot Reversed



Top Pivot Reversed

Compatible with: System M+, System Fx & System One

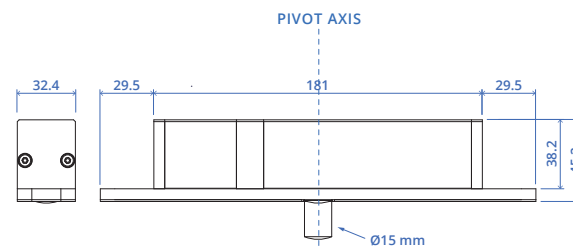
- Pivot point from 130 mm to middle placement
- Ideal for extra thin door frames and/or large glass openings
- Installation in the top jamb

Kit finish: Satin stainless steel

FJS/TPRGSS - Class G Satin Stainless cover plate

FJS/TPRGBK - Class G Black cover plate

FJS/TPRGWH - Class G White cover plate



CABLE GROMMET

SPECIFICATIONS

NOW INCLUDED IN ALL PIVOT KITS

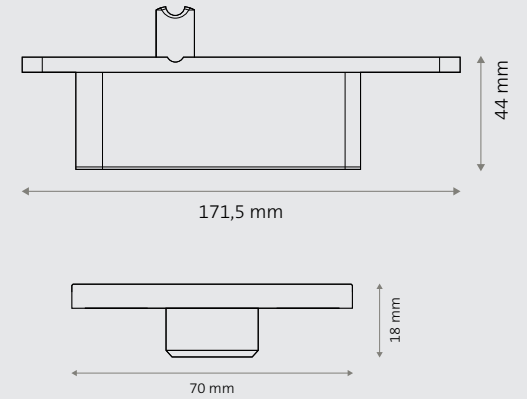
Top pivot – 70 mm Class G

Pivot position	From 70 mm to middle
Cable entry	✓
Pin diameter	Ø15 mm
Dimensions	171.5 × 32 × 44 mm
Material	Stainless steel and anodised aluminium

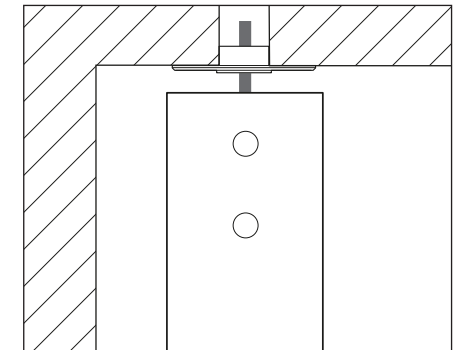
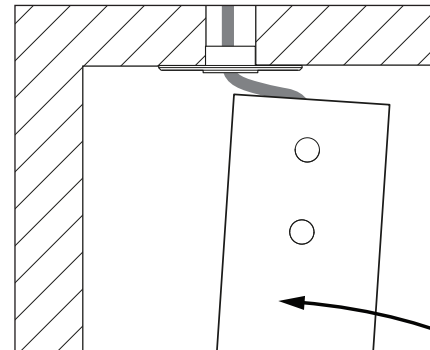
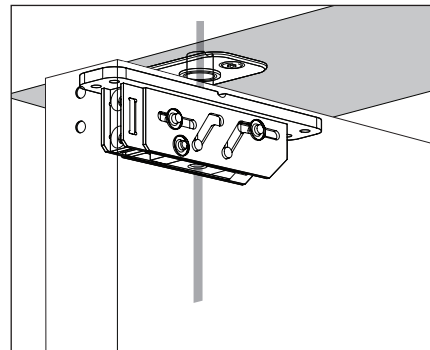
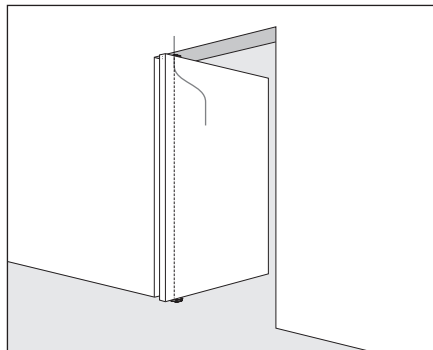
Compatible with

Bottom pivots	System One – 70 mm System Fx – 70 mm System M+ – 70 mm
Ceiling plates	Ceiling plate – Class G

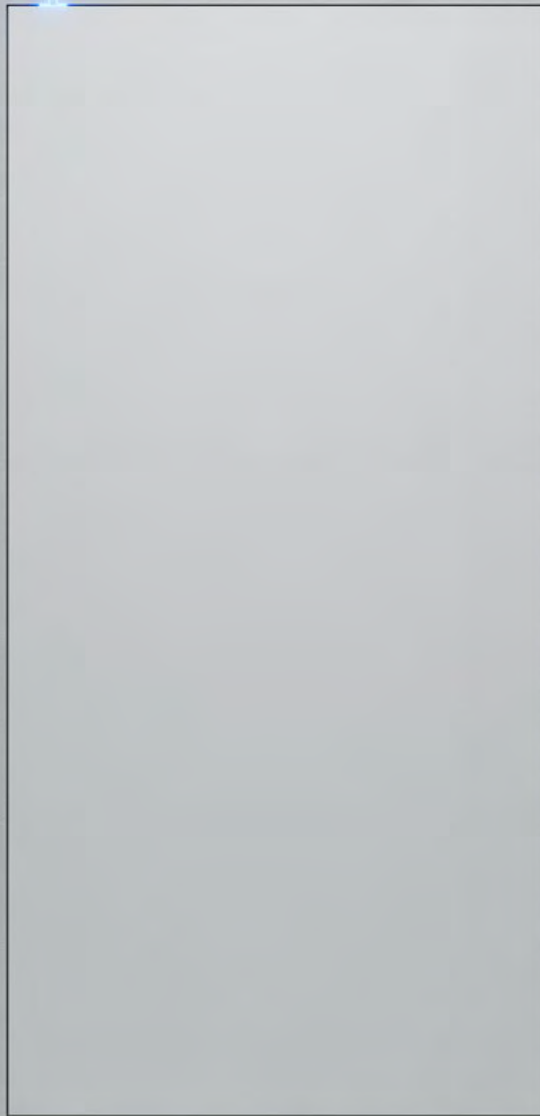
CABLE GROMMET COMPONENTS



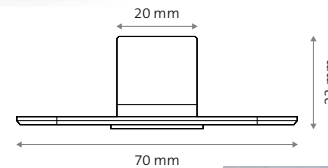
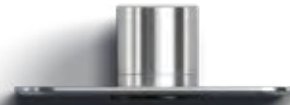
INSTALLATION



Ceiling plates



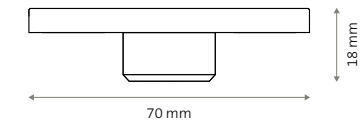
A ceiling plate is the component installed in the ceiling or top frame that connects with the top pivot of a FritsJurgens system. It receives the pin from the top pivot and ensures secure anchoring of the door. Depending on the type of top pivot and installation situation, different ceiling plate variants are available.



Ceiling plate Class G

Pin diameter	Ø15 mm
Dimensions	70 × 40 × 23 mm
Material	Stainless steel
Available colours	<input type="radio"/> Stainless steel <input checked="" type="radio"/> Black
Compatible with	
Top pivots	Top pivot – 40 mm Class G Top pivot – 70 mm Class G

The standard ceiling plate is mounted in the ceiling above the pivot door. It guides the pin of the top pivot into the ceiling and ensures that the door stays securely aligned and in place.



Receiver

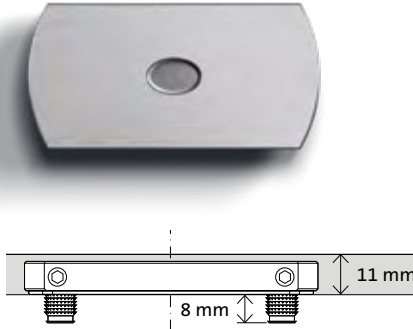
Pin diameter	Ø15 mm
Dimensions	70 × 32 × 18 mm
Material	Stainless steel
Available colours	<input checked="" type="radio"/> Stainless steel
Compatible with	
Top pivots	Top pivot – Reversed

The Receiver is mounted inside the top of the pivot door. The pin of the top pivot Reversed is rotated downwards into the Receiver during the installation.

The Class G ceiling plate is available in two finishes: brushed stainless steel and PVD black. Ceiling plates are made of solid tempered steel and therefore fully scratch resistant.

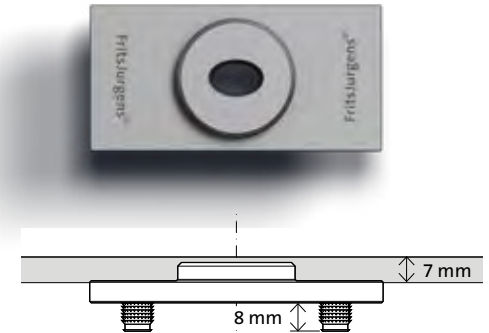
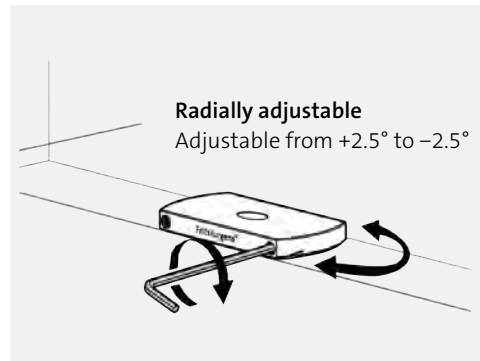
Floor Plates

We offer various floor plates to match the pivot hinge of your choice and the design of your pivot door.



Floor plate squared – Radially adjustable

Mounting pins	Two or four 8 mm pins for optimal stability between two floor types. Or two 30 mm pins for mounting on layered floor materials.
Undercut	11 mm
Adjustability	Radial: +2.5° to -2.5°
Dimensions	80 × 40 × 9 mm
Material	Stainless steel
Available colours	<ul style="list-style-type: none"> ● Stainless steel ● Black



Floor plate Flush squared – Non-adjustable

Mounting pins	Four 8 mm pins
Undercut	7 mm
Adjustability	No
Dimensions	80 × 40 × 11 mm
Material	Stainless steel
Available colours	<ul style="list-style-type: none"> ● Stainless steel ● Black



The floor plate is available in two finishes: brushed stainless steel and PVD black. Choose between a flush or a standard version. The floor plates by FritsJurgens are made of solid tempered steel and therefore fully scratch resistant. The ceiling plate is available in brushed stainless steel and black as well and can be obtained in the rectangular version only. FritsJurgens by Bellevue Architectural | +61 3 9571 5666 | info@bellevuearch.com.au | www.bellevuearch.com.au

ACCESSORIES: FLUSH FLOOR PLATE

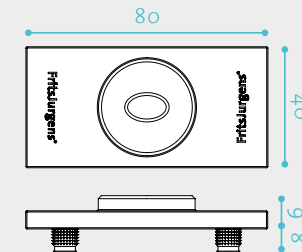
SPECIFICATIONS

Types	FritsJurgens floor plate Flush square (see below for ordering codes) FritsJurgens floor plate Flush rounded (see below for ordering codes)
Dimensions	80 x 40 x 9 mm

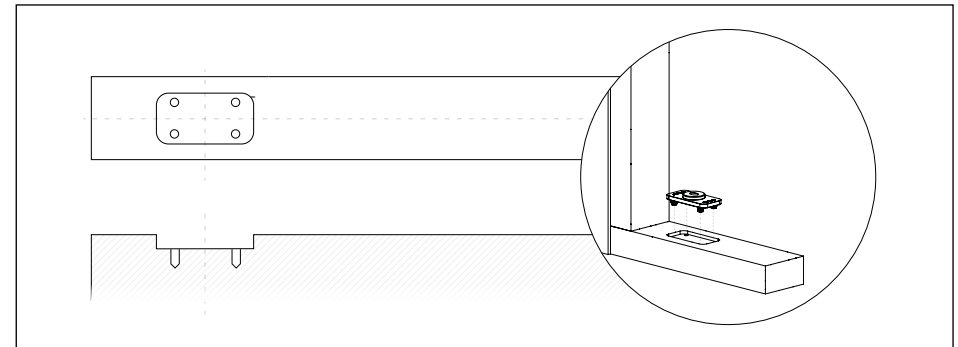
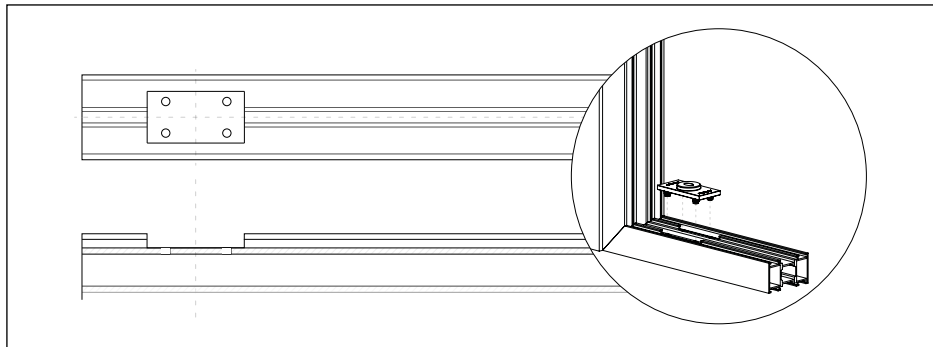
FOR TYPES OF DOORS

Door acting	Double-action Single-action
Weight capacity	0-500 KG
Door width	N/A
Min. door thickness	40mm
Pivot point	Min. 40 mm from pivot point to short side
Ordering codes:	FJVP8040MSS/FLSQ - Flush square end floor plate - Satin stainless steel FJVP8040MEMB/FLSQ - Flush square end floor plate - Electro matt black

It is also possible to upgrade a kit you are purchasing to include the flush floor plate. Please contact Bellevue Architectural for assistance.



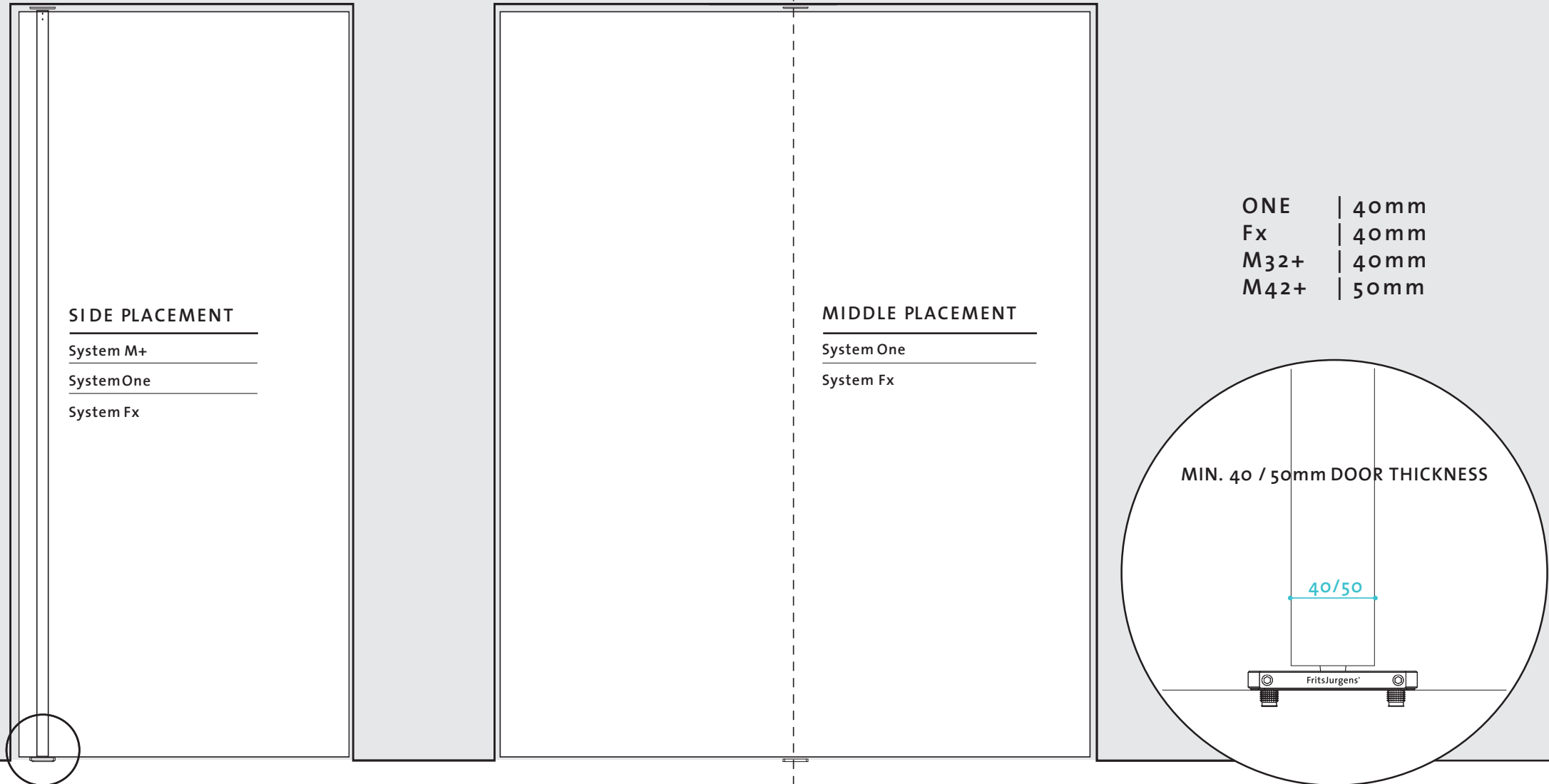
INSTALLATION



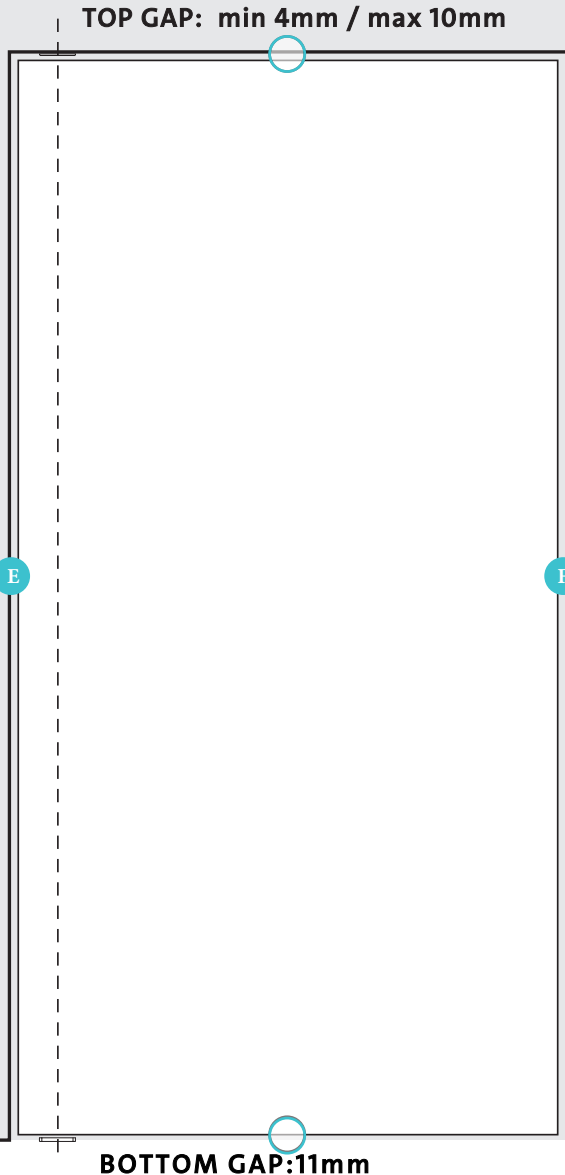
POSITIONING OF THE SYSTEMS & MINIMUM DOOR THICKNESS 40MM

FritsJurgens pivot hinge systems are used to design pivot doors with side & middle placements. Based on the positioning of the system & the function of the pivot door, the right system can be selected.

FritsJurgens pivot hinges have a thickness of 32 mm (or 42 mm). They can be used in doors with a minimum thickness of 40 or 50 mm. This makes FritsJurgens systems suitable for doors of virtually any size and material, giving designers the freedom to design the ultimate pivot door.



GAPS AROUND THE DOOR



Top gap

The distance between ceiling and top of the door should be 4-10 mm*.

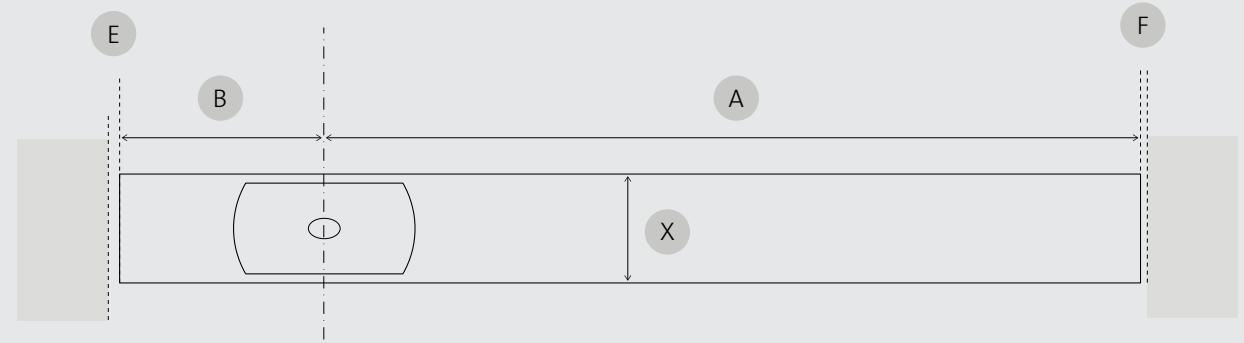
* In all situations, beware of sagging.

Bottom gap

The opening between the bottom of the door and the door depends on the floor plates that are used.

Floor plate rectangular	11 mm
Floor plate round	11 mm
Floor plate Flush rounded	7 mm
Floor plate Flush squared	7 mm

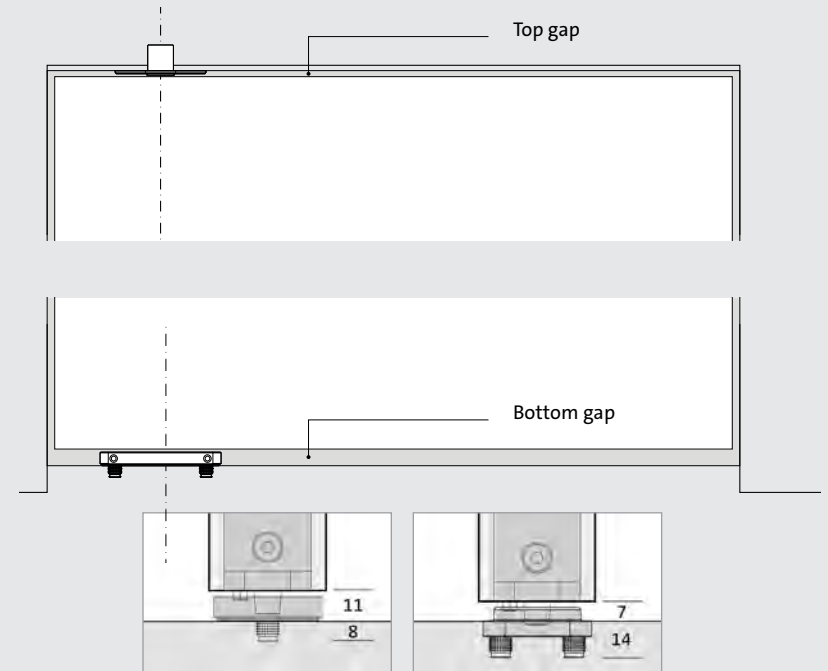
Side gaps



- X Door thickness
- B Distance of pivot point to the near edge of the door
- A Distance of pivot point to the latch edge of the door
- E Minimum gap left
- F Minimum gap right

The minimum gap at the side of the door depends on the thickness and the width of the door in relation to the position of the pivot point.

The outcome on left and right will be different. The calculation is made based on the radius of the door when turning. The smaller the radius (the pivoting side) and the thicker the door, the bigger the required gap between door and wall or frame.



ACCESSORIES: FLUSH MAGNET

SPECIFICATIONS

Types	FritsJurgens Flush - stainless steel (FJ707001) FritsJurgens Flush - black (FJ707002) Optional: Forstner drill bit Ø22 mm with clamping ring (FJ707100)
Dimensions	50 x 22 x 15 mm

FOR TYPES OF DOORS

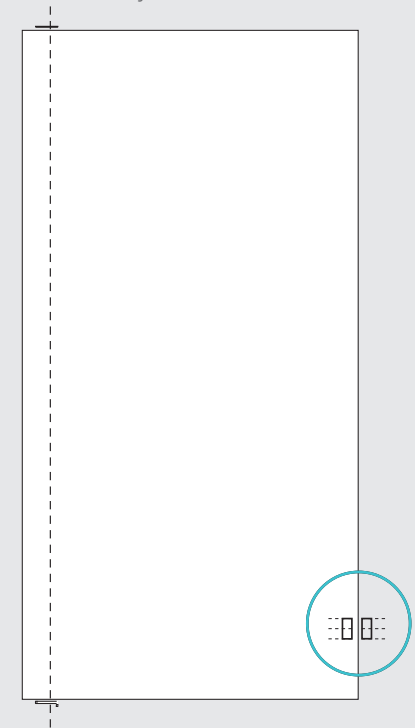
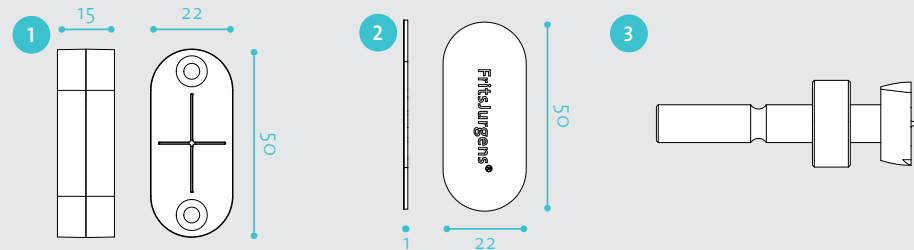
Door acting	Double-action Single-action
Weight capacity	N/A
Door width	N/A
Door height	N/A
Pivot point	N/A
Min. door thickness	40 mm

FLUSH COMPONENTS

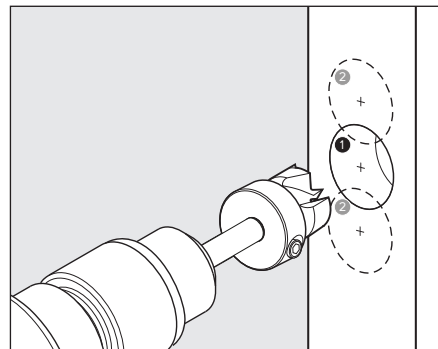
1. Magnets (2x)
2. Cover plates (2x)
3. Optional: drill bit Ø22 mm

Cover plates in stainless steel or black

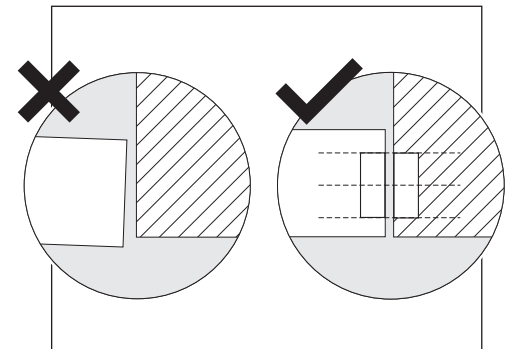
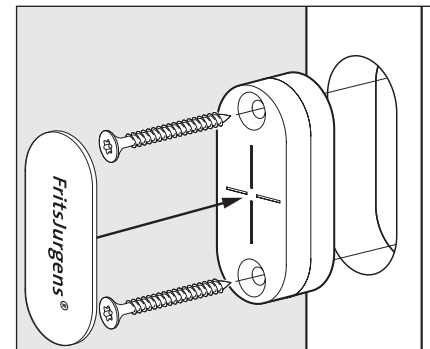
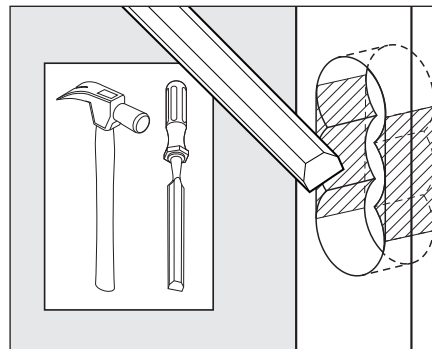
The Flush magnet consists of two strong magnets. These are mounted in the bottom side of the pivot door and the adjacent wall. The Flush magnet hereby strengthens the 0° position of every pivot door, regardless its size or weight. The pivot door is always perfectly in line with the adjacent wall or door. A seamless junction, fully 'flush'.



INSTALLATION



Recommended for use:
Forstner drill bit Ø22 mm
Optional to order



Door seam <---->
3.0 mm - 6.0 mm

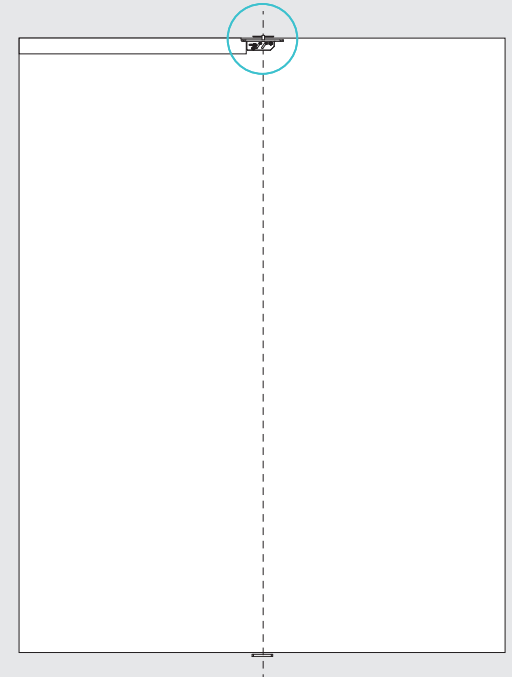
HEXAGON GUIDE

SPECIFICATIONS

Types	FritsJurgens Hexagon Guide - 1 metre length (FJ706000) FritsJurgens Hexagon Guide - 2 metre length (FJ706200)
Dimensions	1M: 998 x 31.5 x 44 mm 2M: 1998 x 31.5 x 44 mm

FOR TYPES OF DOORS

Door acting	Double-action Single-action
Weight capacity	0-500 KG
Door width	Refer to the system it is to be used with
Door height	Unlimited
Pivot point	Min. 280 mm from pivot point to short side
Min. door thickness	40 mm

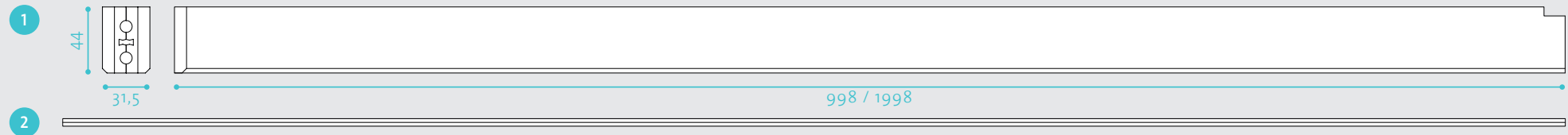


The Hexagon Guide can ease the installation of the pivot door. The minimum distance from the pivot point to the edge of the door is 40mm and the maximum distance is the middle of the door width.

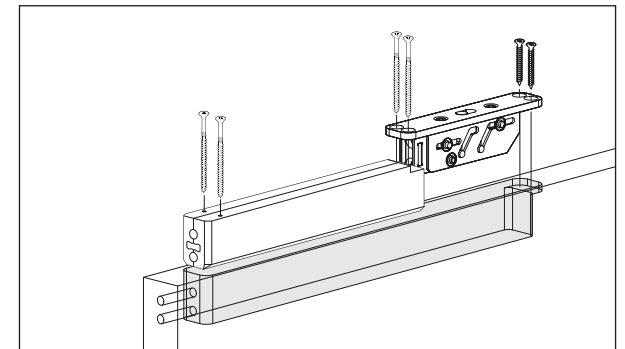
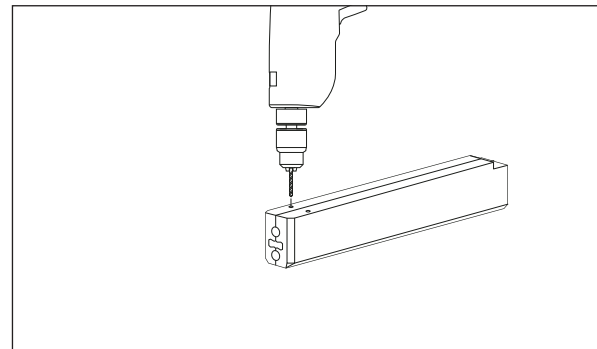
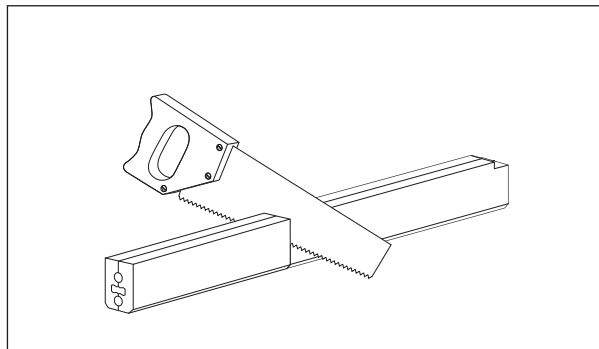
When the pivot point is greater than 280 mm from the edge of the door, the Hexagon Guide can help to make the installation even easier.

HEXAGON GUIDE COMPONENTS

1. Hexagon Guide
2. Hexagon key



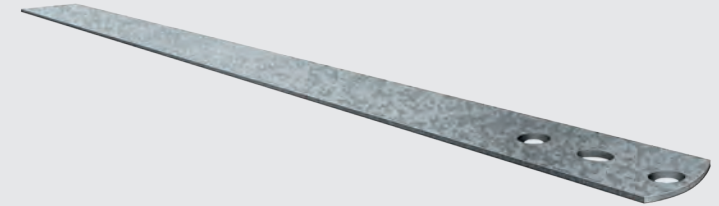
INSTALLATION



AXLE WRENCH

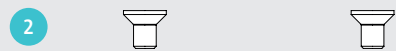
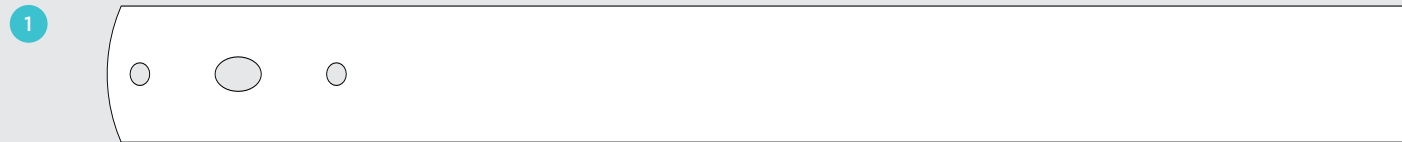
SPECIFICATIONS

Types	FritsJurgens Axle Wrench (FJ500503)
Dimensions	400 x 36 x 3 mm



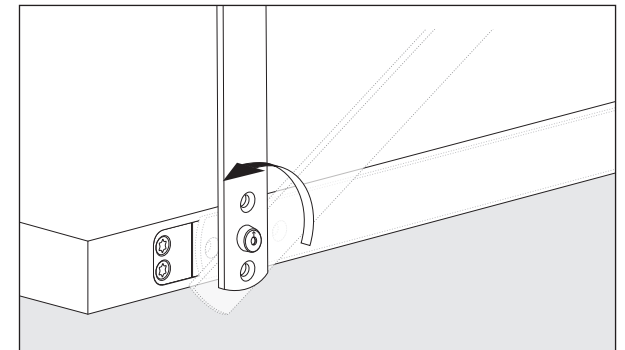
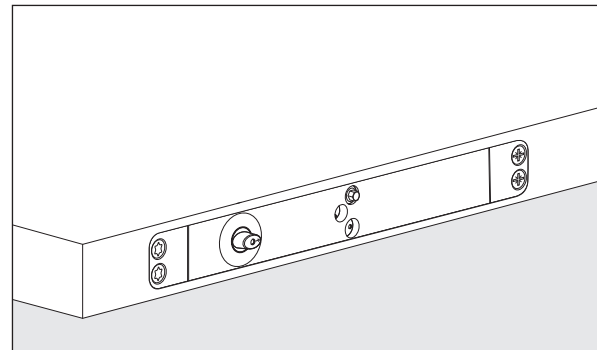
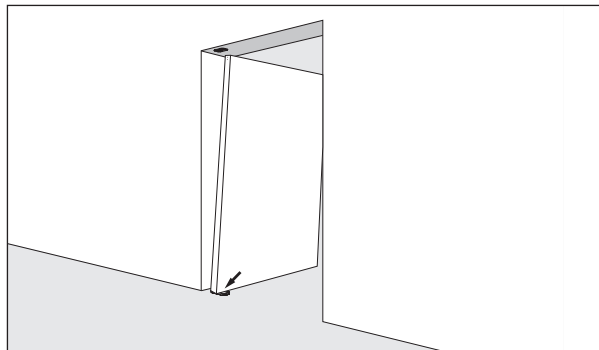
AXLE WRENCH COMPONENTS

1. Axle Wrench
2. 2x M6 fixing screws (in case of frequent use it is possible to mount the floor plate on the Axle Wrench).



When installing a door fitted with System M+, it is very important that the door is installed in its open position. This can be accomplished by using the Axle Wrench to rotate the oval spindle in the bottom of the System M+ 90°, pointing the arrow toward the direction the door will be opening (latching side). In case of frequent use it is possible to mount the floor plate on the Axle Wrench.

INSTALLATION



ACCESSORIES: THOMPSON SUB-STRATA FLOOR & CEILING PLATE & PACKERS

Function

Engineered to strengthen floor and ceiling substrates when installing FritsJurgens pivot systems, this reinforcement solution distributes the substantial loads generated by large-format pivot doors across a broader surface area.

Oversized and heavy pivot doors can create highly concentrated stresses at the pivot points. Where the sub-strata or ceiling structure is not designed for these point loads, there is an increased risk of cracking, movement, or long-term fatigue. By spreading the load beyond the standard pivot floor and ceiling plates, this system reduces stress concentration and improves structural reliability over time.

Designed for Installation Flexibility

Key benefits include:

- Load-spreading base plate to reduce cracking risk in sub-strata and ceiling finishes
- Slab-edge mounting capability for challenging structural conditions
- Includes packers to build up to finished floor height (where required)
- Predefined fixing positions on the base plate for both the packers and the pivot floor plate
- Three base-plate mounting positions to suit the installation:
- Edge mounting
- Side mounting
- Central mounting

The result is a practical, installer-friendly solution that improves both structural security and on-site efficiency — particularly in premium residential and commercial pivot door applications.

Engineered for strength. Designed for certainty.

Components

1 x Sub Strata Base Plate
 1 x 10mm Base Plate Packer
 1 x 5mm Base Plate Packer
 1 x 3mm Base Plate Packer
 2 x 1mm Base Plate Packer
 8 x M8 Mounting Bolts

Specifications

FritsJurgens modles	All
Weight capacity	0-500 KG
Door width	Max 5000mm
Material	Galvanised stainless steel
Pivot point	Min. 40 mm from pivot point to short side

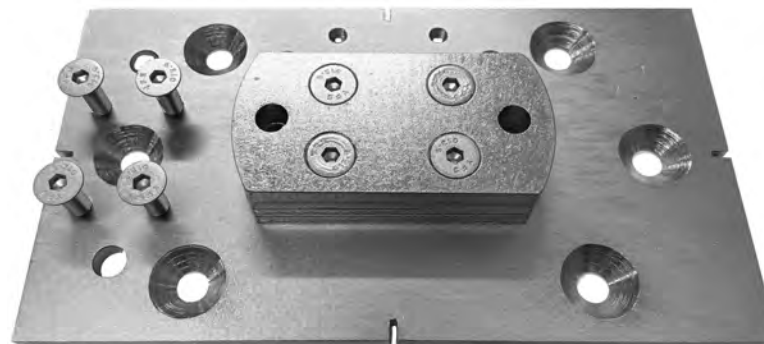
Ordering codes:

Ceiling kit

TFTPKIT - Full kit
 TFTP1 - 1mm ceiling plate packer
 TFTP3 - 3mm ceiling plate packer
 TFTP5 - 5mm ceiling plate packer
 TFTP10 - 10mm ceiling plate packer

Floor kit

TFBKIT - Full kit
 TFBP1 - 1mm ceiling plate packer
 TFBP3 - 3mm ceiling plate packer
 TFBP5 - 5mm ceiling plate packer
 TFBP10 - 10mm ceiling plate packer



ACCESSORIES: SCHALL-EX® L15/30 WS PIVOT AUTO SEAL

Function

Precision Sealing for Pivot Doors — Engineered and Made by Athmer in Germany

Until now, traditional drop seals have struggled to perform reliably on pivot doors — often fouled by floor spring hardware or compromised by the unique movement of the door leaf.

Athmer has solved this challenge with an innovative adjustable roller actuator, redefining how automatic door seals engage.

Unlike conventional actuators that press against a fixed point on the jamb, the Athmer roller actuator engages by rolling smoothly along the jamb surface. This subtle yet critical difference eliminates point-pressure friction, allowing the seal to activate consistently without interference from pivot hardware or the complex geometry of pivot door movement.

The result is smooth engagement, reduced wear, and reliable acoustic and draft sealing — even on large-format pivot doors.

The Athmer Schall-Ex L15/30 WS is available in lengths up to 2335mm and can be installed at the top and/or bottom of the door leaf, providing comprehensive horizontal sealing.

When paired with Athmer BAA 1028/3000 magnetic side strips, a complete perimeter sealing system is achieved — delivering acoustic control and performance previously difficult to realise in pivot door applications.

Specifications

FritsJurgens models	All																																				
Actuator	Roller																																				
Door width	635 upto 2350mm																																				
Max seal travel	12mm																																				
Position	Top and bottom of door																																				
Ordering codes:	<table border="0"> <tr> <td>BAA946/0820</td> <td> </td> <td>820mm can be shortened to 635mm</td> </tr> <tr> <td>BAA946/0920</td> <td> </td> <td>920mm can be shortened to 760mm</td> </tr> <tr> <td>BAA946/1070</td> <td> </td> <td>1070mm can be shortened to 885mm</td> </tr> <tr> <td>BAA946/1210</td> <td> </td> <td>1210mm can be shortened to 1010mm</td> </tr> <tr> <td>BAA946/1333</td> <td> </td> <td>1333mm can be shortened to 1135mm</td> </tr> <tr> <td>BAA946/1583</td> <td> </td> <td>1583mm can be shortened to 1385mm</td> </tr> <tr> <td>BAA946/1708</td> <td> </td> <td>1708mm can be shortened to 1510mm</td> </tr> <tr> <td>BAA946/1883</td> <td> </td> <td>1883mm can be shortened to 1635mm</td> </tr> <tr> <td>BAA946/2000</td> <td> </td> <td>2000mm can be shortened to 1885mm</td> </tr> <tr> <td>BAA946/2150</td> <td> </td> <td>2150mm can be shortened to 2010mm</td> </tr> <tr> <td>BAA946/2335</td> <td> </td> <td>2335mm can be shortened to 2135mm</td> </tr> <tr> <td>BAA946/ASS</td> <td> </td> <td>Actuating roller plate SSS</td> </tr> </table>	BAA946/0820		820mm can be shortened to 635mm	BAA946/0920		920mm can be shortened to 760mm	BAA946/1070		1070mm can be shortened to 885mm	BAA946/1210		1210mm can be shortened to 1010mm	BAA946/1333		1333mm can be shortened to 1135mm	BAA946/1583		1583mm can be shortened to 1385mm	BAA946/1708		1708mm can be shortened to 1510mm	BAA946/1883		1883mm can be shortened to 1635mm	BAA946/2000		2000mm can be shortened to 1885mm	BAA946/2150		2150mm can be shortened to 2010mm	BAA946/2335		2335mm can be shortened to 2135mm	BAA946/ASS		Actuating roller plate SSS
BAA946/0820		820mm can be shortened to 635mm																																			
BAA946/0920		920mm can be shortened to 760mm																																			
BAA946/1070		1070mm can be shortened to 885mm																																			
BAA946/1210		1210mm can be shortened to 1010mm																																			
BAA946/1333		1333mm can be shortened to 1135mm																																			
BAA946/1583		1583mm can be shortened to 1385mm																																			
BAA946/1708		1708mm can be shortened to 1510mm																																			
BAA946/1883		1883mm can be shortened to 1635mm																																			
BAA946/2000		2000mm can be shortened to 1885mm																																			
BAA946/2150		2150mm can be shortened to 2010mm																																			
BAA946/2335		2335mm can be shortened to 2135mm																																			
BAA946/ASS		Actuating roller plate SSS																																			





BELLEVUE

ARCHITECTURAL

BELLEVUE ARCHITECTURAL

954 Glen Huntly Rd ,

Caulfield South

Victoria 3162 Australia

+ 61 39571 5666

info@bellevuearch.com.au

www.bellevuearch.com.au

FritsJurgens®

FRITSJURGENS INTERNATIONAL

A. Einsteinlaan 1

9615 TE Kolham

The Netherlands

+31 598 343 410

info@fritsjurgens.com