



**BELLEVUE**  
ARCHITECTURAL



# HMB MULTI-POINT LOCKING SYSTEMS

3-point mechanical and electronic locking systems for hinged doors

100% made in The Netherlands

## About Bellevue and HMB

In 1989 Joop Boumans, together with his sons Dirk and Jeroen, established the current company. HMB started by accepting orders from large construction companies. The products were very popular, and as a result the 'Bouman men' set up their own dealer network in 1991, which proved to be a great success.

One year later Dirk, Jeroen and Margreet Oudshoorn-Boumans expanded the company even further. During that year the police approval mark called 'Veilig wonen' [living securely], was introduced, resulting in an increase in demand from the housing associations, hard-ware supplier, the joinery sector and lock specialists. In this same year the Lock Case Router and the Security Rosettes were developed.

In the years that followed, HMB substantially increased its product range, including a number of highlights.

*1994 - An idea led to the current adjustable & universal strike plate; the Multi-point was introduced with all necessary tools.*

*1995 - Introduction Door Frame Jig Tilting Table and concept adjustable strike plate casing.*

*1999 - Introduction of the Counter Multi-point Lock de Luxe as the ideal solution for double doors.*

*2002 - Introduction of the 4 Seasons Frame in collaboration with woodworking factory, Brusckhe in Haarlem.*

*2003 - Introduction of the Counter Multi-point Lock Rapido.*

*2004 - Introduction of the Adjustable U-cassette.*

*2005 - Introduction of the Adjustable Strikers, in combination with the fibre glass Striker casing.*

*2007 - In collaboration with various woodworking factories; the recessed Counter Multi-point Lock was developed.*

*2008 - Introduction of the Universal Hinge Jig.*

*2009 - Introduction of the Motortronic Multi-point lock.*

*2010 - Lieke van Lexmond becomes the face of HMB profit locks & tools.*

*2011 - Introduction of the Renovation Multi-point lock.*

*2012 - HMB moves to the new premises at 17-19 Einsteinweg, in IJsselstein.*

*2013 - Introduction of the Exclusive Line Security Hardware.*

*2014 - HMB celebrates its 25th year.*

HMB is located in The Netherlands and is committed to the highest quality in service and product. All HMB products are made and shipped from their factory in The Netherlands.

---

For over 35 years, the name Bellevue Architectural has always been synonymous with providing the latest in designer fittings from the European marketplace, that create visual attraction and differentiation without compromising quality, design or affordability.

Today Bellevue Architectural is proud to present the new HMB range of 3-point locking systems.

To date, Bellevue has supplied countless projects: from new homes and residential renovations, to apartments, large commercial projects and resorts. All of Bellevue's products are available Australia and New Zealand wide from various resellers, or on a direct basis (based on location). For your nearest reseller location, please visit our web site at [www.bellevuearch.com.au](http://www.bellevuearch.com.au)

Bellevue is proud to be a leader in the architectural hardware market, and will continue its tradition to provide products that are unique, visually distinctive, affordable and just as importantly, stocked locally, in quantity.



## Manual Multi-Point Locking Systems

### BAH004 – Mechanical 3-point HOOK based locking system; designed for high wind environments

- Pull Handle external; operational lever internal, - center latched unless locked by key
- Operational lever both sides - center latched unless locked by key

Pg. 10

## Automatic Engaging Multi-Point Locking Systems

### BAH009 – Auto-engaging 3-point LATCH based locking system; self-engaging

- Pull Handle external; operational lever internal, locked unless deadbolted by key
- Operational lever both sides - latched in 3 positions unless deadbolted by key

Pg. 11

### BAH010 – Automatic 3-point LATCH based locking system; self-engaging including ESCAPE mode

- BAH010A - Pull Handle external or lever both sides - Self-engaging, deadbolted at all times
- BAH010B&C - Lockable Operational external lever-Deadbolted unless out side handle operational

Pg. 12

## Mototronic Multi-Point Locking Systems

### BAH007 – Electronic self-locking & electric opening HOOK system; including ESCAPE mode

- Pull Handle external, operational Escape lever internal, - Electronically self-locked with key override
- Fixed or Operational external lever, Escape internal - Electronically self-locked with key override

Pg. 13

## Automototronic Multi-Point Locking Systems

### BAH012 – Electronic Self-Locking and unlocking LATCH based system; Including escape mode

- Pull Handle external, operational Escape lever internal, - Deadlocked unless unlocked by electronic/key
- Fixed or Operational external lever, Escape internal - Deadlocked unless unlocked by electronic/key

Pg. 14

## Counter Multi-Point Flush Bolt System for the Inactive Leaf of a Double Door Set

- BAHCMP - Counter Multi-Point Locking System for the Inactive Leaf of a Double Door Set
- BAHCMP - Imagery

Pg. 15

## MPL Range Dimensions / Measurements

- BAH004, BAH007, BAH009, BAH010, BAH012 - Technical Drawings
- BAH009, BAH010, BAH012 - Striker Technical Drawings

Pg. 16 - 22

Pg. 23

In today's chaotic and security conscious world, securing a door has never been a more serious consideration. With over 35 years of door locking experience behind us, Bellevue Architectural understands that the door locking hardware selected, must provide a sense of assurance and comfort that the customers security requirements have been met, and their expectations are exceeded.

Securing a door traditionally has been left to a lock with a single point of engagement within the doorjamb, easily broken with enough force. Now with the release of the HMB family of multi-point Locks, doors can now be secured at the top, middle and bottom of a jamb creating an almost impenetrable level of security compared to a traditional single point lock. 3-points of locking on a door are far stronger than one.

### BE SAFE, BE SECURE WITH HMB.

Made 100% in The Netherlands and conforming to the highest EU security standards, HMB's range of multi-point locks are now available across Australia and New Zealand. Multi-point locks provide a superior level of security over traditional locking systems due to their steel construction, 3 latching bolts and separate dead bolt. Making them ideal for environments where security is a must have, doors that must be secure.

These new locks can be used with door handles, entry pull handles, as well as doorknobs in any combination. Turn and cylinder versions are available as well as fully automated electric and self-engaging versions.















# BAH004 Multi-point Hook Locking System

Open & close with lever; lock with key - Unlocked unless locked

*3 separate points of locking is always going to be stronger & more secure than one.*



An Ideal Lock For Entrance Doors With An Operational Handle On Both Sides Of The Door.

**Security** - In today's chaotic and security conscious world, securing a door is a serious consideration. The door locking hardware selected must provide a sense of assurance and comfort that our security requirements have been met, and our expectations exceeded.

The HMB BAH004 multi-point locking system has been specifically designed to provide a significantly improved level of security for doors up to 3200mm high that need to be securely locked. The steel construction of the BAH004 3-point locking system combined with the solid steel keepers provide superior strength and security.

### Placement

- Used internally or externally where a door needs to be locked securely and regular passage access is required or where the chance of weathering may impact a door and cause warping.

### Operation

- Open & close the door using the lever handle (as you would any door) to come and go as you please.
- The lever handle engages and disengages the latch; allowing free entry and exit at all times.
- To lock and unlock the door, simply engage the key. The multi-point system locks or unlocks all **3 separate locking points**: two chamfered hook bolts; at the top & bottom of the door; & the dead bolt in the center of the door.

- Once locked, the door is secure at three (3) independent locking points.

### Added Value -

- The lock features a strong cogwheel construction which increases the pressure on the hook bolts, but not on the cylinder. This unique design makes the lock very easy to operate, whilst providing a gradual transfer of force to the hook bolts.
- HMB multi-point locks have a small casing that make them ideal for narrow styled French; single or double doors up to 3200mm tall.
- The HMB custom developed hook bolts and adjustable strikers mean the door is guaranteed to close and lock easily every time. *Even if the door bends or warps up to 8mm*; the door will close and lock without a problem.

- HMB custom developed hook bolts and adjustable strikers also improve draft resistance, thus keeping the weather and noise outside (saving on heating and / or air-conditioning costs).

- Because the lock features a small shallow lock case; less timber is routed from the door. This design feature makes the lock and the door stronger; providing a higher level of security.

- The BAH004 multi-point locking system is for all external and internal environments making it ideal for all residential or commercial projects.

- Loosely locked, rattling doors, humidity and general weathering on doors which can cause door shrinkage and / or swelling, are no longer a problem due to HMB's adjustable striker kit.

By adjusting the HMB striker; these problems are instantly resolved; providing security and peace of mind for the long term.

### BAH004 Quick Facts

Door Height	Suitable for doors up to 3200mm
Bowing, Warping & Energy Efficiency	Hook bolts pull the door & jamb together even if warped by <b>8mm for a tight seal.</b>
Locking	2 x Chamfered Hooks & 1 x Dead & 1 x Latch
Adjustable Striker	Ideal for any future door movement
Back Set	60mm standard (55mm by request)
Opening Direction	Non-Handed Bi-Directional
Manufacturing Base	100% Made in The Netherlands
Reliability	2 Year Manufacturer's Guarantee

### BAH004 Order Codes

BAH004A - Back set 60mm	for doors 1900 - 2300mm tall Galvanised Steel
BAH004B - Back set 55mm	for doors 2301 - 3200mm tall Galvanised Steel
CMP for 2nd Leaf	See page 13
Jigs & Templates	Call for pricing

# BAH009 Multi-point Auto-Engaging Locking System

Open & close with lever or key; lock with key - Locked unless unlocked

*3 separate points of locking on a door is always going to be stronger than one.*



## Ideal Lock For Entrance Doors With An Operational Handle On Both Sides Or Fixed External.

**Security** - In today's chaotic and security conscious world, securing a door is serious consideration. The door locking hardware must provide a sense of assurance and comfort that our security requirements have been met, and our expectations exceeded. The HMB multi-point locking systems have been specifically designed to provide a significantly improved level of security for doors up to 3200mm high that need to be securely locked.

### Placement

- An ideal lock for front doors or security doors within a residential or commercial environment.
- Designed for a door that is using an external pull handle and an operational internal lever or operational lever on both sides of the door.

### Operation

- On closing the door, all 3 latches self-engage, (the top and bottom latch lock into position). To dead bolt the door, turn the key and the center dead bolt is thrown.
- The door is now locked at 3 separate points ensuring the highest level of security. The door is secure and tightly sealed which reduces drafts.
- When using the lever, when engaged the handle pulls back all 3 latches allow the door to open. Only the key will withdraw the dead bolt.

### Lock Usage Configurations

- **Config 1.** Using a fixed pull handle or dummy handle on the outside and an operational lever handle on the inside:  
When closed, the door is effectively locked from the outside, the inside lever is fully operational and you can open & close the door as you please.

Once you throw the dead bolt with the key this locks off the internal lever, and the door becomes deadbolted.

- **Config 2.** Using an operational lever handle on both sides of the door.

When is closed, the door is fully latched from both sides (in all 3 positions).

You can open and close the door at will from both sides until you throw the centre deadbolt by use of the key on ether side of the door. Both levers become inactive (locked), the door is now deadbolted.

### Added Value -

- **Extra Strength** - In the top and bottom striker, behind the striker plate, there are magnets. When the door closes the top and bottom dead latching bolt shoot out an extra 10mm and lock creating a secure dead locked environment.
- As a result of the BAH009's clever design, you can use either a fixed or operational handle on the outside of the door and an operational handle on the inside.

Loose locking, rattling doors, humidity and general weathering on doors which can cause door shrinkage and /or swelling, are no longer a problem due to HMB's adjustable striker kit.

By adjusting the HMB striker; these problems are instantly resolved; providing security and peace of mind for the long term.

- Because the lock features a small shallow lock case; less timber is routed from the door than a traditional lock body.

### BAH009 Quick Facts

Door Height	Suitable for doors up to 3200mm
Locking	2 x latch bolts & 1 x Dead Bolt, 1 x Latch
Adjustable Striker	Ideal for any future door movement
Back Set	55mm standard
Narrow Lock Body	Suitable for Narrow Stiles
Opening Direction	Non-Handed Bi-Directional
Manufacturing Base	100% Made in The Netherlands
Reliability	2 Year Manufacturer's Guarantee

### BAH009 Order Codes

BAH009	Galvanised Steel
CMP for 2nd Leaf	See page 13
Jigs & Templates	Call for pricing

# BAH010 Multi-point Auto-Engaging Locking System

Open & close with lever or key; self-engaging - locked unless unlocked

*3 separate points of locking on a door is always going to be stronger than one.*



## Ideal ESCAPE Lock For Doors With An Operational Handle Internally & Fixed Handle Externally.

**Security** - In today's chaotic and security conscious world, securing a door is a serious consideration. The door locking hardware select must provide a sense of assurance and comfort that our security requirements have been met, and our expectations exceeded. The HMB multi-point locking systems have been specifically designed to provide a significantly improved level of security for doors up to 3200mm high that need to be securely locked.

### Placement

- An ideal lock for front doors or security doors within a residential or commercial environment.
- Designed for a door which is using an external pull handle and an operational internal lever or operational lever on both sides of the door.

### Operation

- On closing the door, all 3 latches and the deadbolt self engage, the top and bottom latch lock into position, the center dead bolt also engages automatically.

The door is now dead locked at 3 separate points ensuring the highest level of security. The door is secure and tightly sealed at 3 points, reducing drafts.

- When using the lever, the handle pulls back all 3 latches and the dead bolt allowing the door to open.

### Lock Usage Configurations -

- **Config 1.** Using a fixed pull handle or dummy handle on the outside and an operational lever handle on the inside.

When closed, all three latches and the dead bolt self-engage. The door is dead locked from the outside. The inside lever is fully operational and you can open & close the door as you please. Escape Mode.

- **Config 2.** A fixed or operational external lever with an escape function lever on the inside of the door.

When closed, all three latches and the dead bolt self engage. The door is dead locked from the outside. You can then lock or unlock the outside handle to become an operational lever and open and close the door at will. The inside handle will always remain in escape mode even if when the door is closed and deadbolted. Escape Mode.

### Added Value -

- **Extra Strength** - In the top and bottom striker, behind the striker plate, there are magnets. When the door closes, the the top and bottom dead latching bolts shoot out an extra 10mm and lock creating a secure dead locked environment.

- As a result of the BAH010's clever design, you can use either a fixed or operational handle on the outside of the door and an operational handle on the inside.

- Loose locking, rattling doors, humidity and general weathering on doors which can cause door shrinkage and /or swelling, are no longer a problem due to HMB's adjustable Striker Kit.

By adjusting the HMB striker; these problems are instantly resolved providing security and peace of mind for the long term.

- Because the lock features a small, shallow lock case; less timber is routed from the door than a traditional lock body.

### BAH010 Quick Facts

Door Height	Suitable for doors up to 3200mm
Locking	3 x latch bolts & 1 x Dead Bolt
Adjustable Striker	Ideal for any future door movement
Back Set	55mm standard
Narrow Lock Body	Suitable for Narrow Styles
Opening Direction	Non-Handed Bi-Directional
Manufacturing Base	100% Made in The Netherlands
Reliability	2 Year Manufacturer's Guarantee

### BAH010 Order Codes

BAH010	Galvanised Steel
CMP for 2nd Leaf	See page 13
Jigs & Templates	Call for pricing

# BAH007 Mototronic Multi-point Hook Lock With Escape Mode

Electronic auto-locking. Unlock with lever & electronics - locked unless unlocked

*3 separate points of locking on a door is always going to be stronger than one.*



## An Ideal Electronic Self-Engaging Lock For Doors that require Internal Escape Mode Functionality

**Security** - In today's chaotic and security conscious world, securing a door is a serious consideration. The door locking hardware select must provide a sense of assurance and comfort that our security requirements have been met, and our expectations exceeded. The HMB multi-point locking systems have been specifically designed to provide a significantly improved level of security for doors up to 3200mm high that need to be securely locked.

### Placement

- Used internally or externally where a door needs to have electronic access control to lock & unlock the door securely including providing passage access functionality.
- Due to the upper and lower hook bolts, the BAH007 is ideal for doors where weathering may impact a door and cause warping of up to 8mm.
- Ideal for front doors, shops and offices.

### Operation

- On closing the door, the lock fully engages the top and bottom hook bolts and throws the centre dead bolt automatically. Importantly this lock can be electronically opened.

When closed in the fully locked position, the door can be opened on the outside and inside electronically via a keypad or push to release type button. If a lever is

used internally instead of a pull handle, Escape mode is always active. Simply pull the lever down and exit.

- The lock can always be operated mechanically via the cylinder on both sides in case of a power failure.
- BAH007A** - Designed for external electronic entry via an access controlled device. Used with a pull handle externally and an operational escape mode handle internally. Escape Mode.

This version of the lock can be switched to "latch mode" electronically. This enables the withdrawal of the top and bottom hookbolts which reduces the strain on the lock when using the internal lever.

- BAH007B (Left Hand) & BAH007C (Right Hand)**

By electronically switching the lock to "latch mode" you are able to unlock

an external lever keeping the internal handle in escape mode. This function enables the withdrawal of the top and bottom hookbolts, reducing the strain on the lock when using the levers.

Perfect when you want to use the levers for normal passage usage.

### Added Value -

- The great advantage of a Mototronic Multi-point Lock is that your door is locked 24 hours a day. You no longer need to worry if your door has been deadbolted.

The door remains fully locked, even during a power cut. In case of a power outage the door may be opened by using the key. (not recommended for daily use).

This lock can be used with existing access control systems, management systems and/or fire alarm systems.

- Suitable for emergency doors
- Suitable for different access systems
- Two adjustable latch mode functions
- Automatic (electronically) permanent locking
- Reliable and fast thanks to two powerful motors

### BAH007 Quick Facts

Door Height	Suitable for doors up to 3200mm
Locking	2 x Hook Bolts & 1 x latch, 1 x Dead Bolt & <b>Escape Mode</b>
Adjustable Striker	Ideal for any future door movement
Back Set	55mm
Narrow Lock Body	Suitable for Narrow Stiles
Opening Direction	Non-Handed Bi-Directional (Mod. A only)
Manufacturing Base	100% Made in The Netherlands
Reliability	2 Year Manufacturer's Guarantee

### BAH007 Order Codes

BAH007A	Galavnised Stainless
BAH007B (LH) & C (RH)	Stainless Steel
CMP for 2nd Leaf	See page 13
Jigs & Templates	Call for pricing

# BAH012 Automotortronic Multi-point Lock With Escape Mode

Electronic auto-locking, Unlock with lever & key - locked unless unlocked



Latch & Dead Bolt



Top & Bottom Latch Bolt

*3 separate points of locking on a door is always going to be stronger than one.*



Adjustable Striker Kit

An Ideal Electronic Lock that Self Locks & Unlocks including Internal Escape Mode Functionality

**Automotortronic Escape Mode** - The BAH012 Multi-point lock ensures automatic mechanical locking when the door is closed and can be electronically unlocked on either side of the door via a keypad or release button etc. If a lever is used on the inside, Escape mode is always active. This type of functionality is not normally seen in multi-point locking systems.

### Placement

- Used internally or externally where a door needs electronic access control to locked & unlock the door securely including passage access functionality.
- Perfect for front doors, shops & offices.

### Operation

- On closing the door, the lock fully engages at all 3 latching points and throws the center dead bolt automatically. Importantly, this lock can be electronically opened.

When closed in the fully locked position, the door can be opened on the outside and inside electronically via a keypad or push to release type button.

- If a lever is used internally instead of a pull handle, Escape mode is always active. Pull the lever down and exit.
- The lock can always be operated mechanically via the cylinder on both sides in case of a power failure.

### BAH012A -

- Config 1.** Using a fixed pull handle or dummy handle on both sides of the door using electronic access on both sides of the door.
- Config 2.** Use a pull handle or dummy handle on the outside using electronic access, and an operational handle on the inside with escape mode functionality at all times.

### BAH012B (Australian Left Hand) & BAH012C (Australian Right Hand)

Both designed for operational handles on the outside of the door only (locked or in party mode) using electronic access when needed and a pull handle or dummy handle on the inside using electronic access at all times.

Turning the key enables the outside handle to operate and open the door at all times. Enabling the "party mode" function allows you to open the door as you please.

Turning the key in the other direction disables the "party mode" outside handle securing the door. Access is only via electronic means.

### Added Value -

**Extra Strength** - In the top and bottom striker, behind the striker plate, there are magnets. When the door closes, the centre dead bolt engages automatically. The top and bottom dead latching bolts shoot out an extra 10mm and also lock creating a secure deadlocked environment.

The great advantage of a Automotortronic Multi-point Lock is that your door is locked 24 hours a day. You no longer need to worry if your door is secure.

This lock can be used with existing access control and management systems.

- Suitable for escape doors
- Suitable for different access systems
- Party mode functions
- Automatic permanent locking
- Reliable and fast thanks to 2 powerful motors
- Press-back protection prevents opening with a card
- Less chance of the door warping thanks to permanent locking

### BAH012 Quick Facts

Door Height	Suitable for doors up 3200mm
Locking	3 x Latch Bolts, 1 x Dead Bolt & <b>Escape Mode</b>
Adjustable Striker	Ideal for any future door movement
Back Set	55mm
Narrow Lock Body	Suitable for Narrow Stiles
Opening Direction	Non-Handed Bi-Directional (A only)
Manufacturing Base	100% Made in The Netherlands
Reliability	2 Year Manufacturer's Guarantee

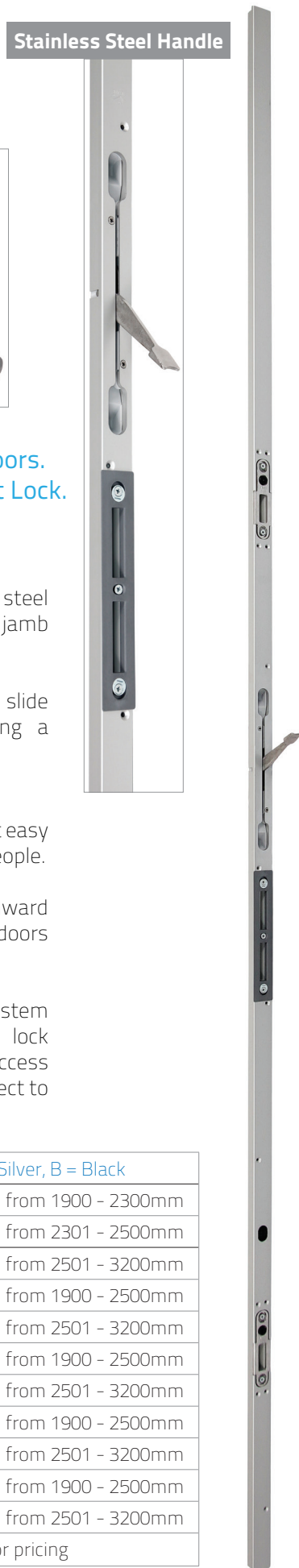
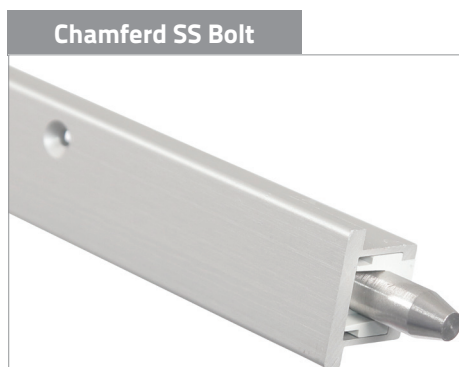
### BAH012 Order Codes

BAH012A, B or C	Galvanised Stainless
CMP for 2nd Leaf	See page 13
Jigs & Templates	Call for pricing

# BAHCMP Securing the Inactive Leaf of a Double Door

Top and Bottom locking, Suitable for BAH004, 007, 009, 010 & 012

*3 separate points of locking on a door is always going to be stronger than one.*



**A Secure Way of Locking Off The Inactive Door Leaf In A Set Of Double Doors. Using the Counter Multi-point System in conjunction with an HMB 3-Point Lock.**

### Placement

- Used on the inactive leaf of a set of double doors, where the active door leaf needs to lock into the inactive leaf without the inactive leaf moving.
- Perfect for all external double doors, residential through to commercial projects.

### Operation

- On closing the active leaf of the double door, the HMB lock fully engages into all 4 latching and locking points in the Counter Multi-point System, thus locking off the active leaf from movement securely.

To ensure the inactive leaf of the double door does not move and is securely locked into position, when the active leaf is open, to engage and disengage the top and bottom stainless steel bolts, lift or lower the stainless lever handle.

When locking, the 2 chamfered stainless steel bolts engage and are thrown into the top jamb and floor securing the door into position.

The chamfered stainless steel bolts slide easily into adjustable strikers ensuring a secure closure.

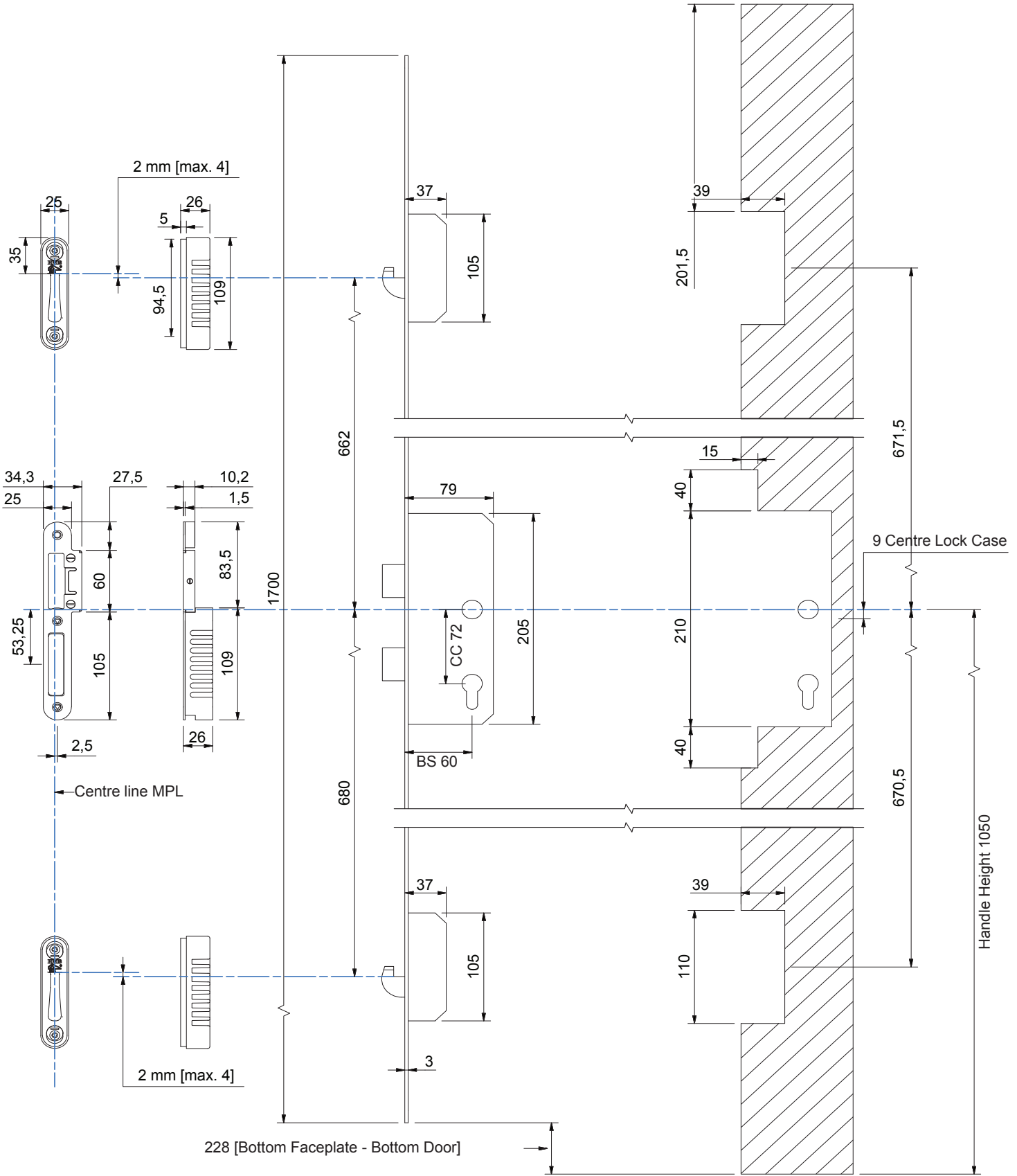
### Added Value -

- The spacing around the handle makes it easy to operate, ideal for elderly or disabled people.
- Tested for wind and water resistance (inward opening doors 450pa, outward opening doors 600pa).
- Using the Counter Multi-point System in conjunction with an HMB 3-point lock is suitable to be used with existing access control and management systems. (subject to model selection)

BAHCMP Quick Facts	
Door Height	Suitable for doors up 3200mm
Locking	Chamfered Top & Bottom Bolts
Suitable for	BAH004, 007, 009, 010 and 012 MPL
Handle	Stainless Steel
Narrow Body	Suitable for Narrow Stiles
Adjustable Keepers	Ideal for any future door movement
Manufacturing Base	100% Made in The Netherlands
Reliability	5 Year Manufacturer's Guarantee

BAHCMP Order Codes - S = Silver, B = Black	
BAHCMP4A S or B	Doors from 1900 - 2300mm
BAHCMP4B S or B	Doors from 2301 - 2500mm
BAHCMP4C S or B	Doors from 2501 - 3200mm
BAHCMP7A S or B	Doors from 1900 - 2500mm
BAHCMP7B S or B	Doors from 2501 - 3200mm
BAHCMP9A S or B	Doors from 1900 - 2500mm
BAHCMP9B S or B	Doors from 2501 - 3200mm
BAHCMP10A S or B	Doors from 1900 - 2500mm
BAHCMP10B S or B	Doors from 2501 - 3200mm
BAHCMP12A S or B	Doors from 1900 - 2500mm
BAHCMP12B S or B	Doors from 2501 - 3200mm
Jigs & Templates	Call for pricing

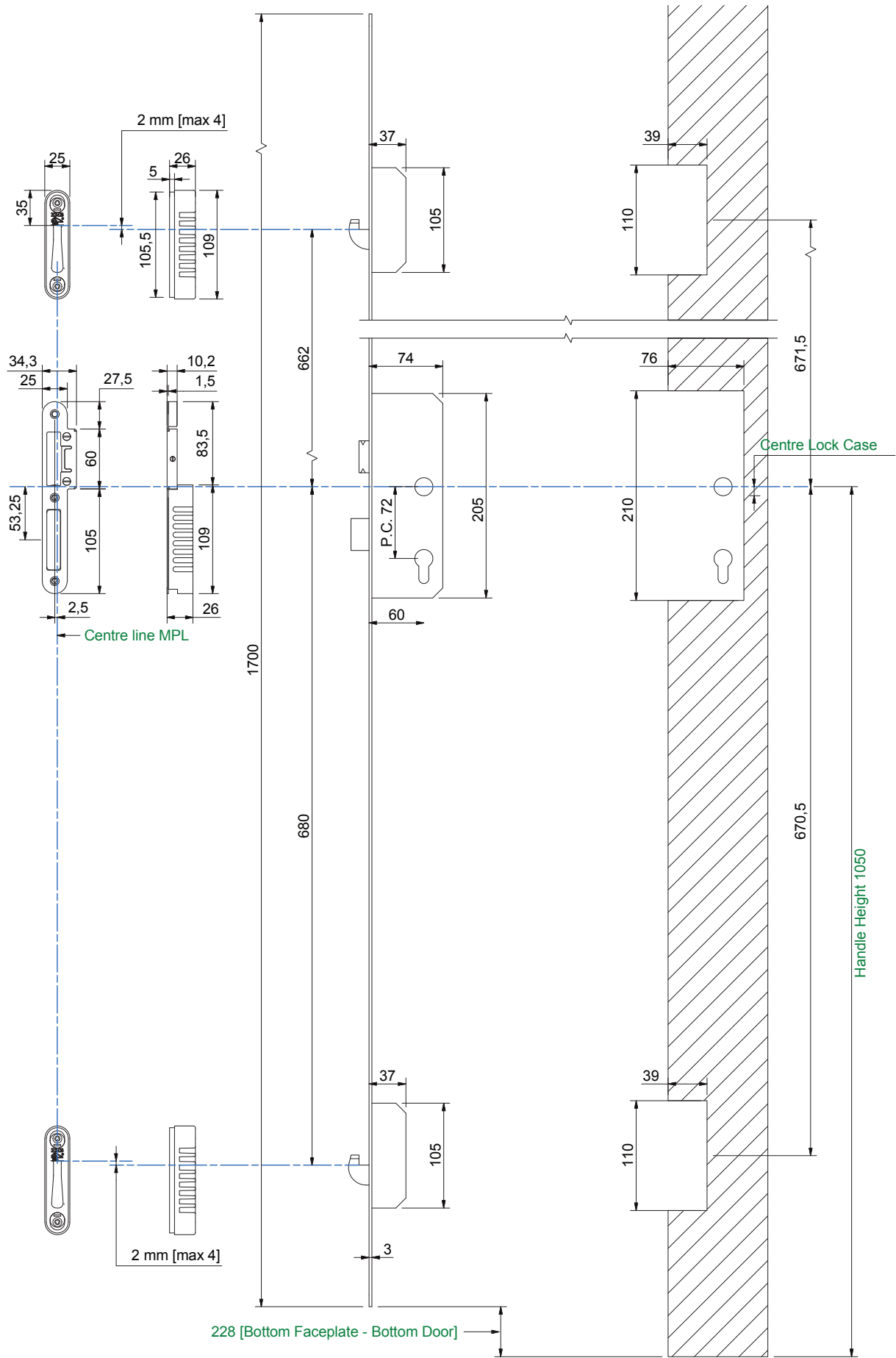
**BAH004A Measurements**



Detailed technical and electronic information available upon request.

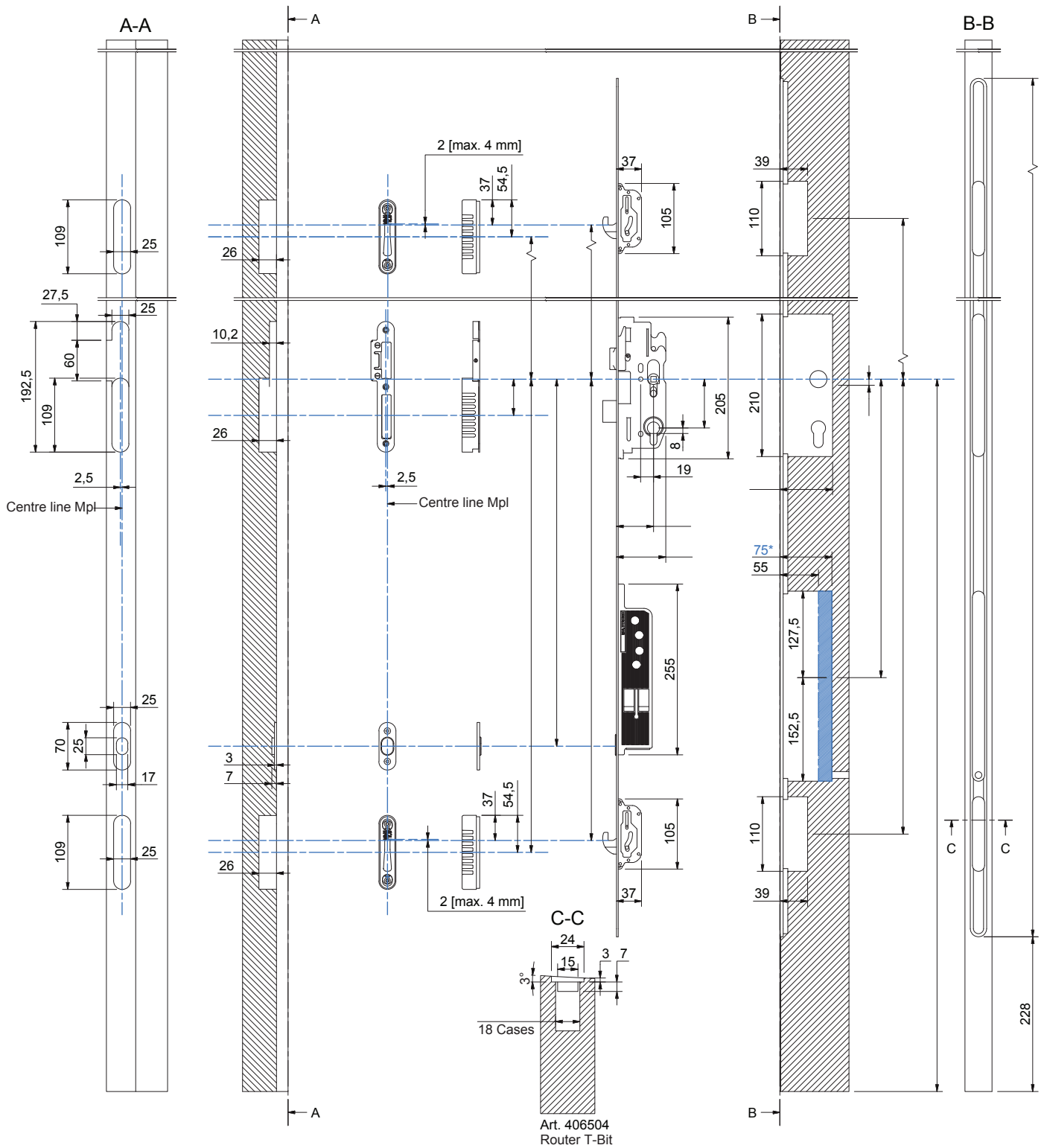


**BAH004B Measurements**



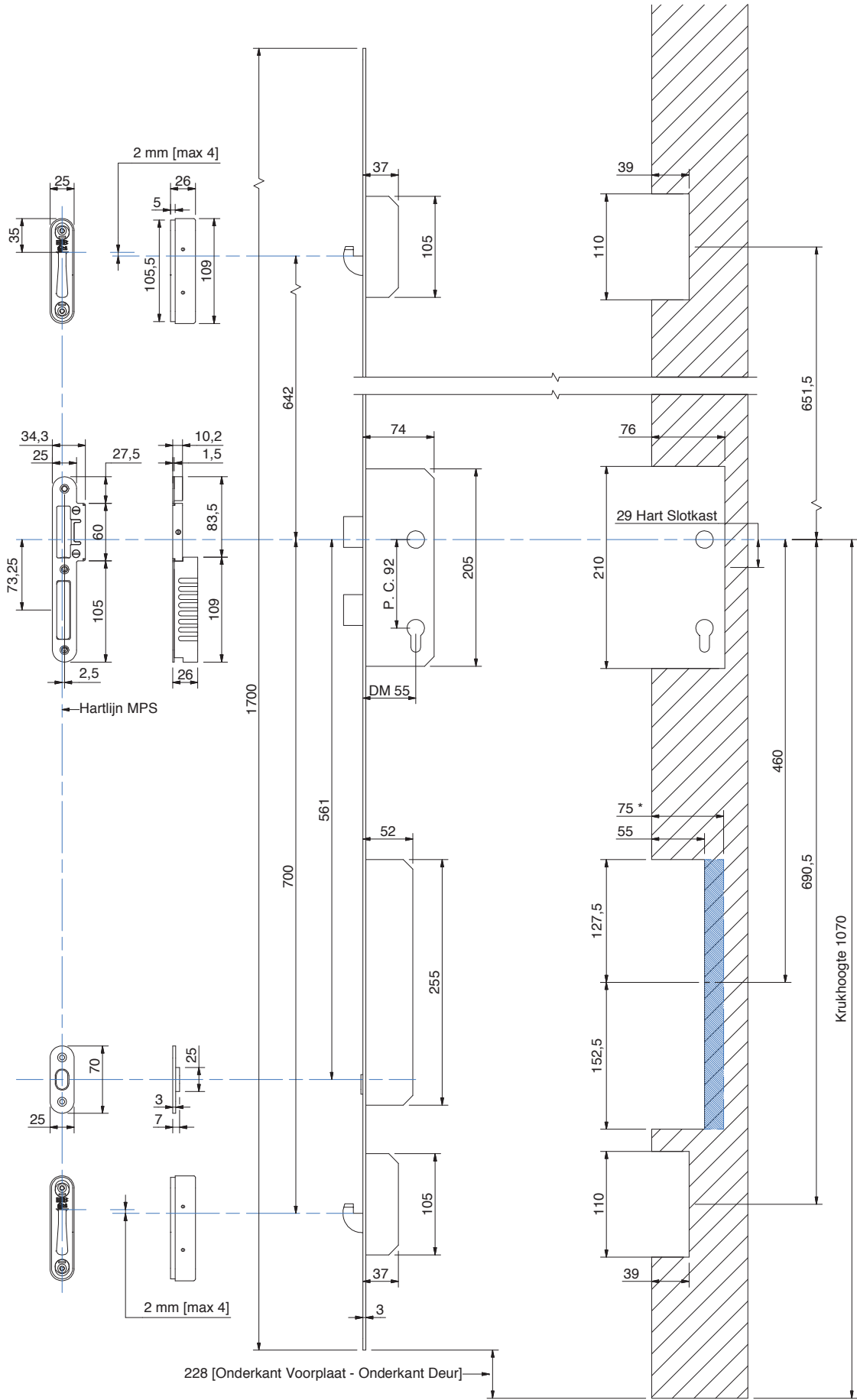
Detailed technical and electronic information available upon request.

**BAH007A Measurements**



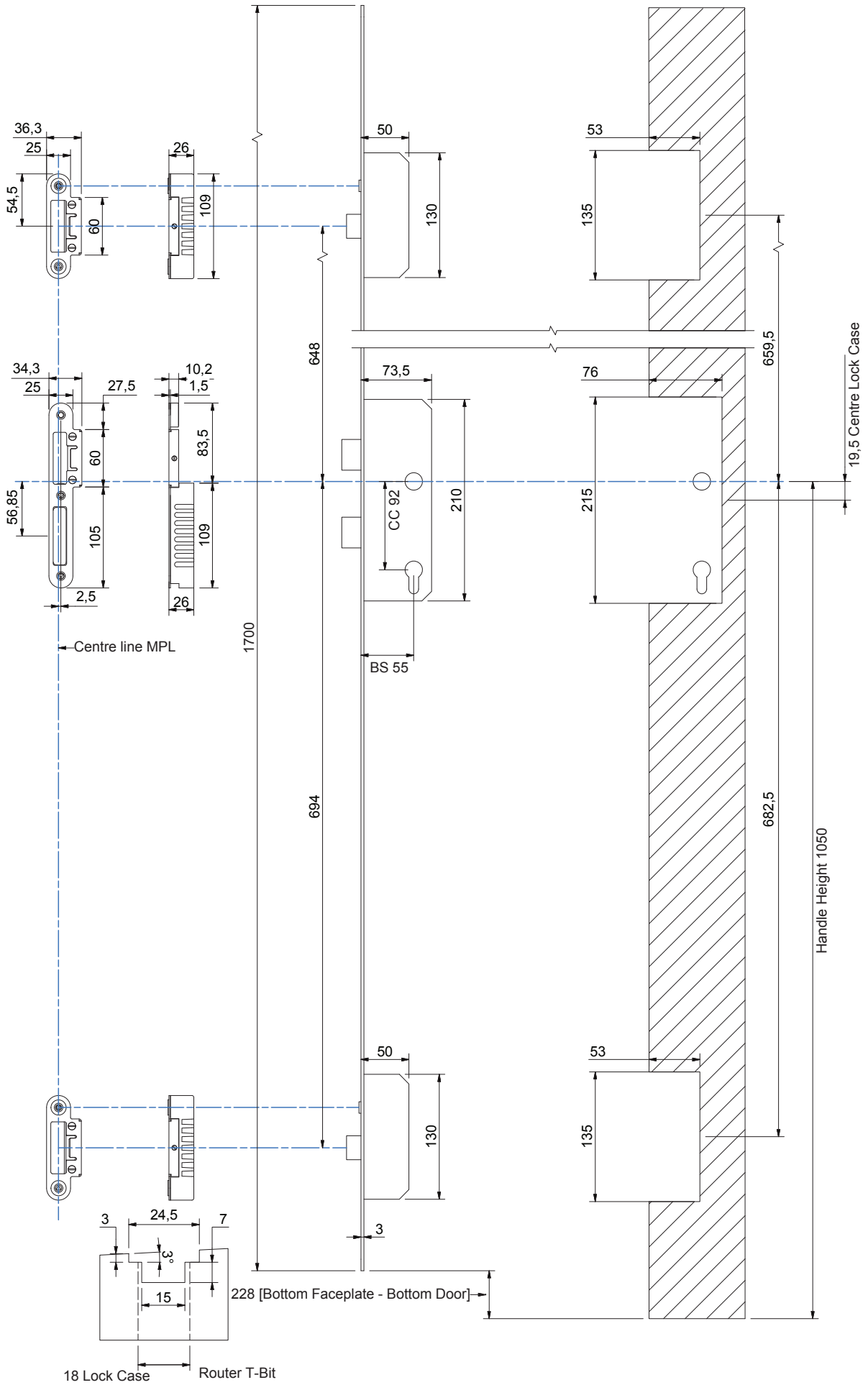
Detailed technical and electronic information available upon request.

**BAH007B & C Measurements**



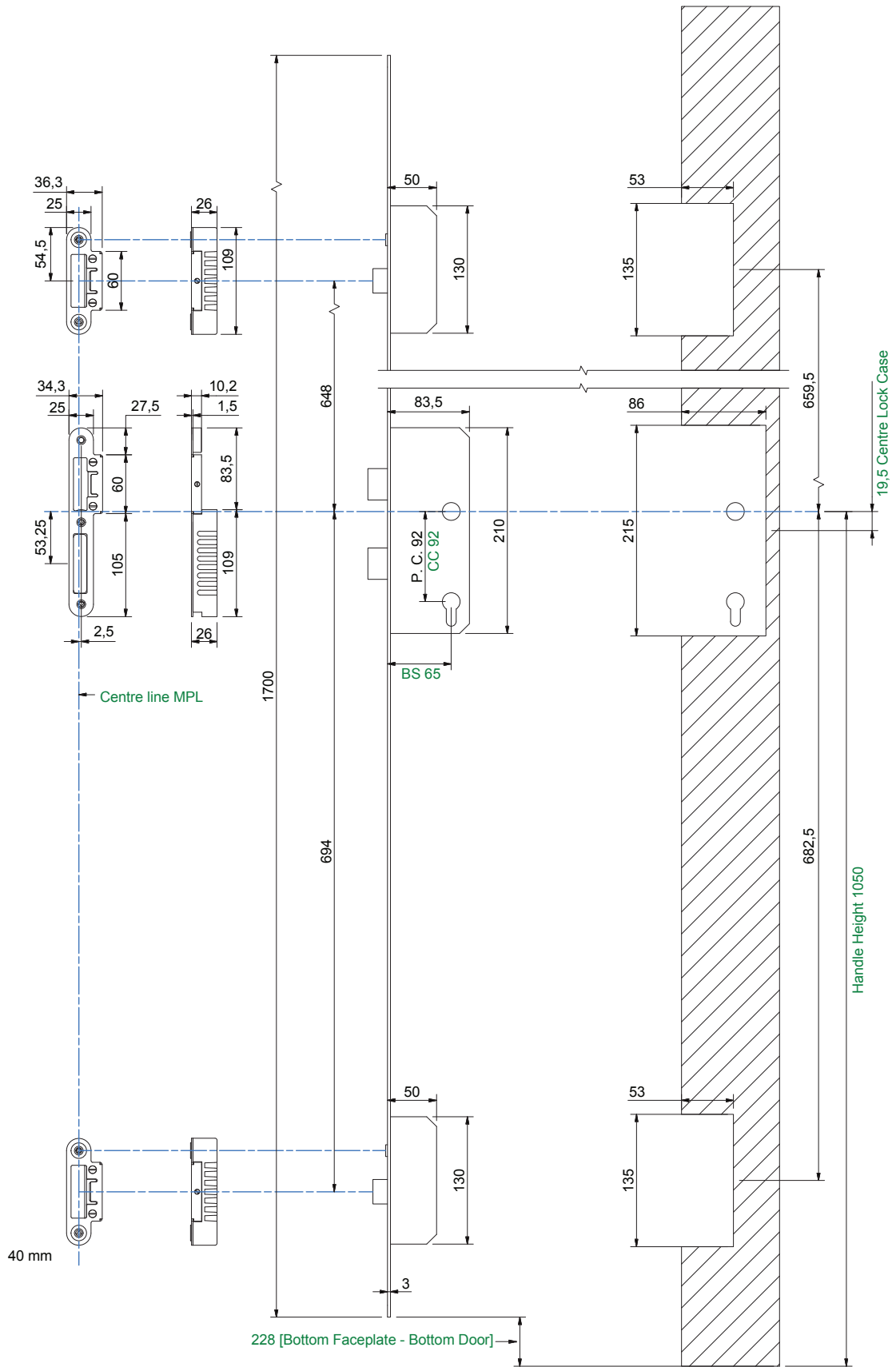
Detailed technical and electronic information available upon request.

### BAH009 Measurements

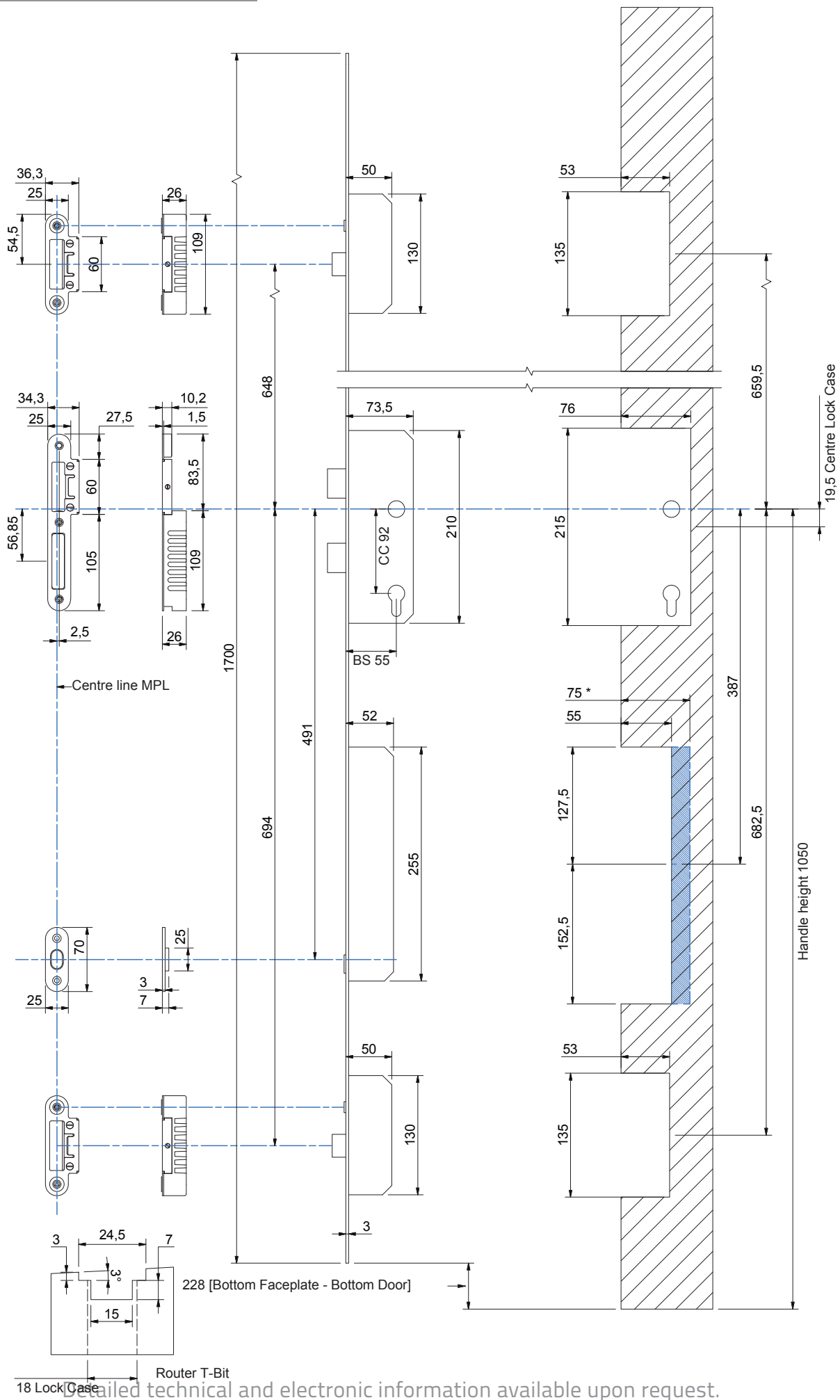


Detailed technical and electronic information available upon request.

**BAH010A, B & C Measurements**

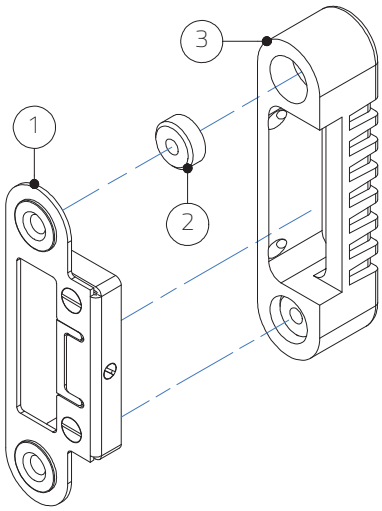


**BAH012 Measurements**

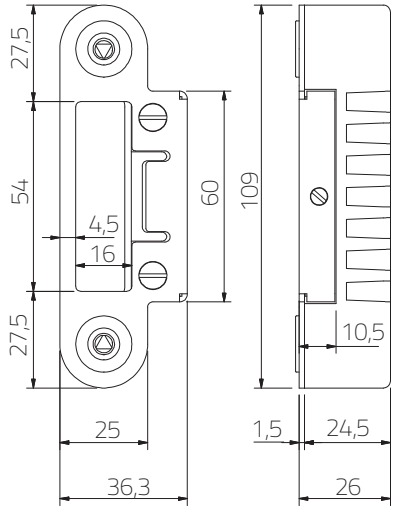


Detailed technical and electronic information available upon request.

**Striker Kit 009, 010, 012**

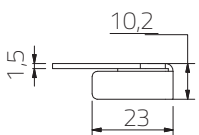
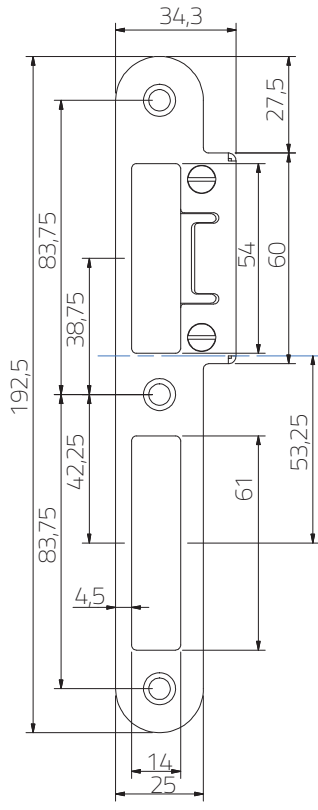
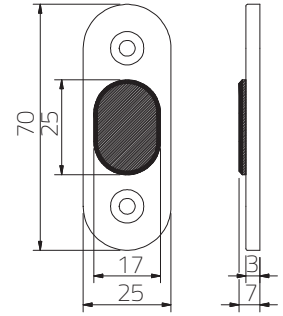


Adjustable Striker Plate, Magnet and Casing for Automatic latch bolts

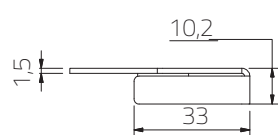
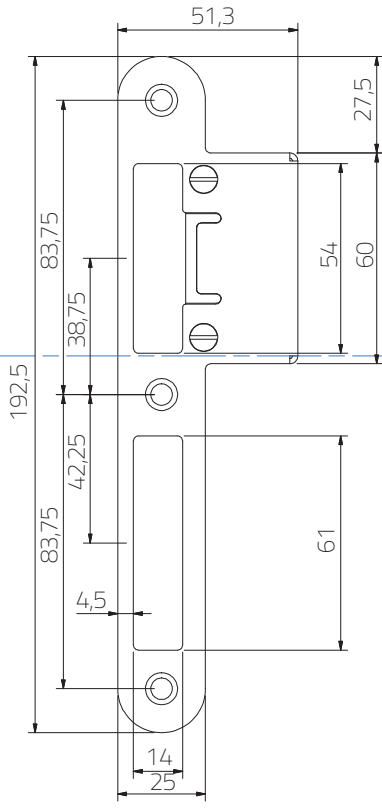


Magnet for Automotortronic MPL's

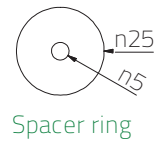
CAUTION  
Solely for Automotortronic MPL's!



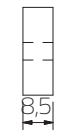
Adjustable Striker Plate for main lock case Short Versions



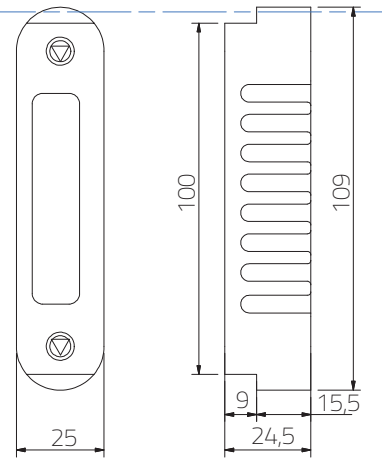
Adjustable Striker Plate for main lock case Long Versions



Spacer ring



Casing for Adjustable striker plate for main lock case





**Bellevue Architectural**

954 Glenhuntly Road

Caulfield South, 3161

Victoria Australia

T+61 (03) 9571 5666

Info@bellevuearch.com.au

www.bellevuearch.com.au

\*Please note that all images in this document are used for illustrative purposes only. Product specifications are subject to change without notice.