



BELLEVUE
ARCHITECTURAL

Horizontal low profile
back plates
New for 2021

Olivari Door Hardware

Architectural Door Hardware
100% Made in Italy

Available in Olivari finishes with a 10-30 year
finish guarantee

Bellevue Architectural



+61 (03) 9571 5666



www.bellevuearch.com.au



info@bellevuearch.com.au



[instagram.com/
bellevue_architectural](https://www.instagram.com/bellevue_architectural)

LOW HORIZONTAL PLATE

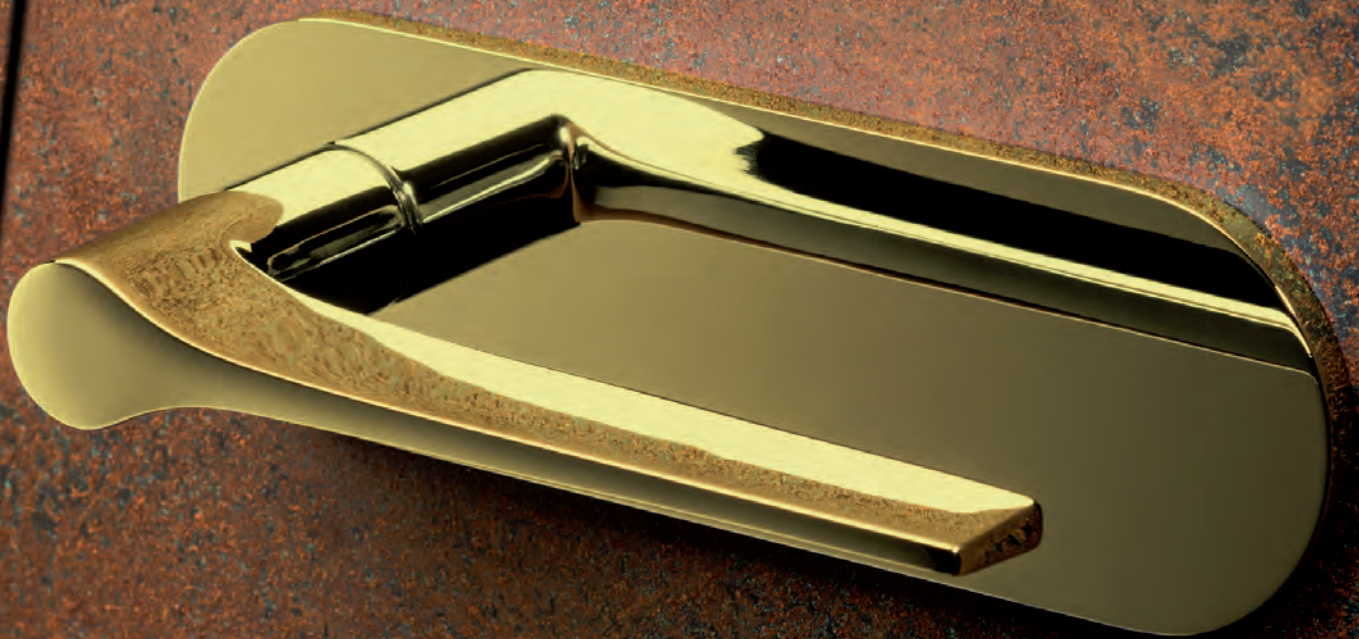
The low 5mm projection horizontal plate was designed as an alternative to the round or square rose that sits behind the lever. These plates are suitable for European locks with an 8mm solid spindle.

The aesthetic value being a sort of backdrop; an extension of the door handle, it creates the effect of one whole integrated piece, with strong expression and sub-stance.

With the aim of allowing the use of the horizontal plate with most Olivari door handles, two versions are available: a rectangular one and an oval one (162 x 51 x 5mm).

Both are equipped with an independent very strong return spring and a horizontal stop position; in order to always bring the door handle back to its correct position after use.

Stringently tested according to the resistance test (DIN EN 1906), the independent springs exceeded 200,000 cycles, resulting in the 4th grade of classification designating them as suitable for heavy use environments. In fact, the test was extended up to 1,000,000 cycles, which was easily exceeded. Both versions are available in all the finishes listed in the catalogue.



Lama by Gio Ponti- M107HRIB



ABC by Rem Koolhaas- M255HSIS



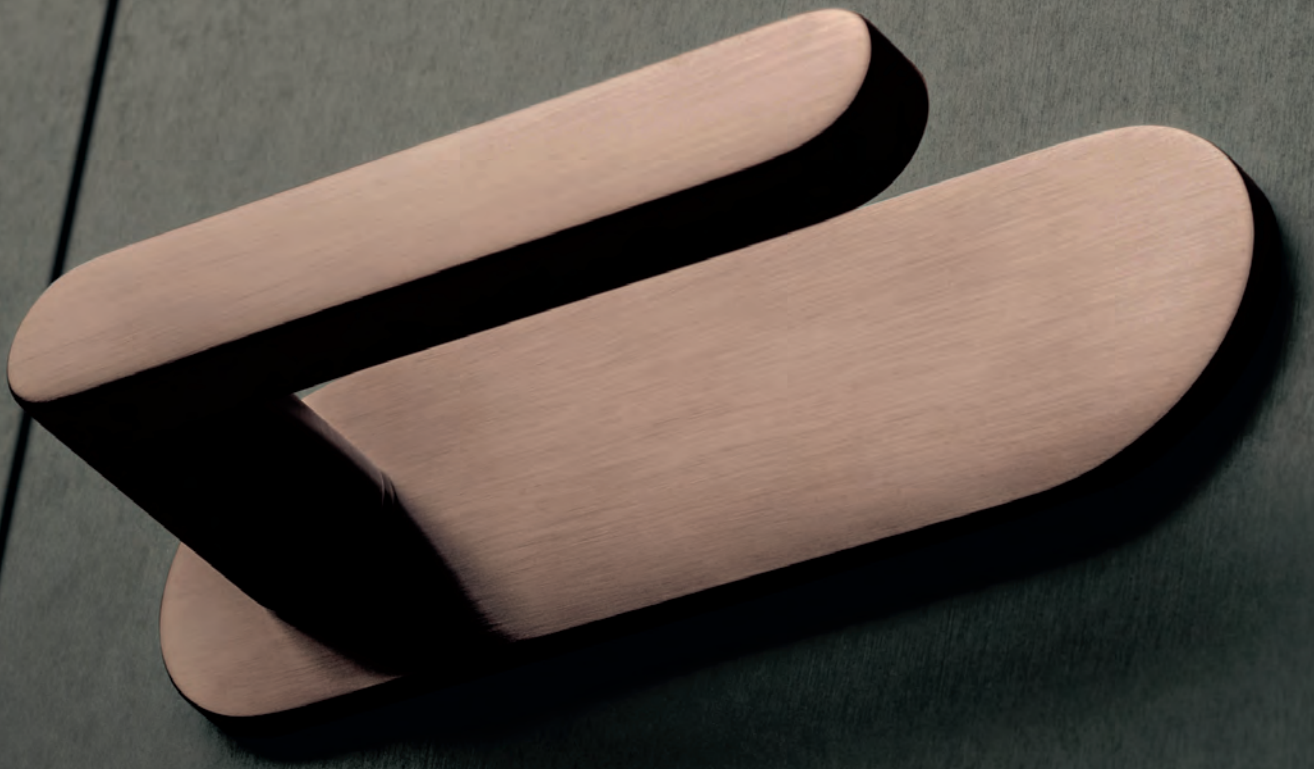
Milano Q by Antonio Citterio- M259HSISBRZ



Living by Dominique Perrault- M222HSCR



Diana by Studio Olivari- M206HSCR



Link by Piero Lissoni- M200HRISBRZ



Diva by Luca Casini- M256HRIS



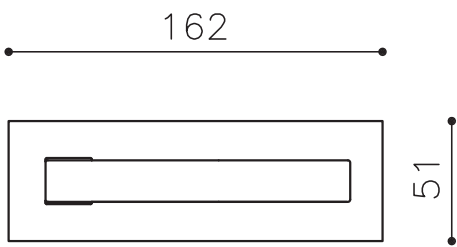
Raffaella by Studio Olivari- M128HRISBRZ



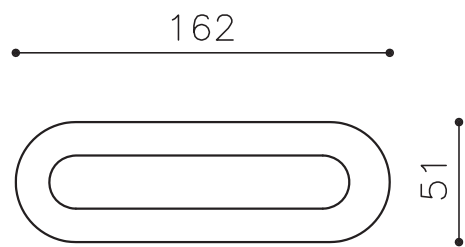
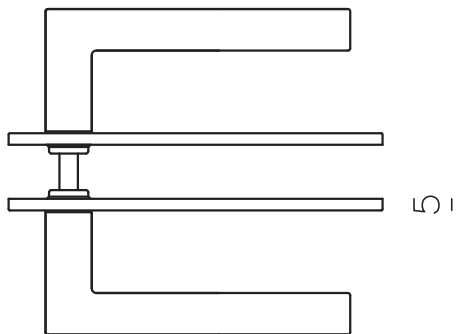
Chiara by Studio Olivari - M125HRCR



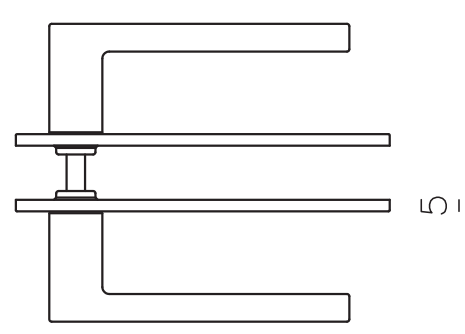
Lotus Q by Javier Lopez- M238HSIS



Code: HS (horizontal square plate)
To specify: replace the S1 with HS in the product code
M238S1IS to M238HSIS



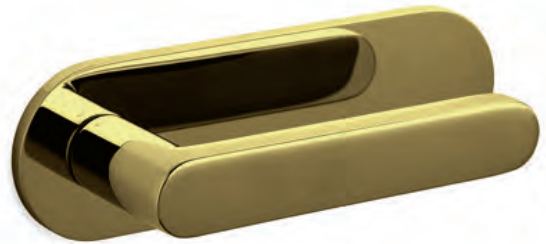
Code: HR (horizontal radial plate)
To specify: replace the R1 with HR in the product code
M238R1IS to M238HRIS



*Suitable with European locks & latches with an 8mm solid spindle.



CR - Polished Chrome



IB - SuperInox Brass



SC - Satin Chrome



ISB - SuperInox Satin Brass



IBN - SuperInox Bright Nickel



ISC - SuperInox Satin Copper



ISN - SuperInox Satin Nickel



ISBRZ - SuperInox Satin Bronze



IS - SuperInox Satin Stainless



IA - SuperInox Anthracite

Finish Guide

All finishes shown in BLUE come with a 30-year anti tarnish guarantee (30yg)
All finishes shown in GREEN come with a 10-year anti tarnish guarantee (10yg)

Olivari of Italy - 100% made in Italy

Superinox finishes: Guaranteed for up to 30 years not to pit, rub, tarnish, fade or lose its lustre even in sea air & high usage environments.

Too often we see tarnished door hardware due to the ravages of time, constant usage or corrosive sea air: Superinox was specifically developed by Olivari of Italy to combat this industry problem. Now a door handle can look as good in 30 years as it did when first installed. Olivari believes that things should last. A lost art in today's disposable world.

Welcome to the world of Superinox

Vacuum metallisation (VM) is an extremely high end technology treatment process habitually employed for tools used in high-velocity steel machining. It is applied to products that have already been chromed, in order to obtain maximum resistance to wear and tear. In fact, VM, the Superinox process, increases the surface hardness of the plated product to three times that of traditional chromium plating. Since 2004, Olivari has been using this technology within its exclusive manufacturing facility located in Borgomanero Italy. An additional benefit of the VM process is its ability to offer metallic colours that cannot be produced within the traditional galvanisation process.

VM coating has exceptional performance in stability and longevity of the colour created, making the plated product last and last. If used in accordance with maintenance guidelines, Superinox finished hardware in Brass, Satin Brass, Bright Nickel, Satin Nickel and Satin Stainless have a **30-year anti tarnish sea air guarantee**. Olivari Superinox finished hardware in Polished Chrome, Satin Chrome, Satin Copper, Satin Bronze, and Anthracite have a **10-year anti tarnish sea air guarantee**.

GALVANIC FINISHING

Galvanisation of the brass handle gives it a protective metal coat of nickel-chromium to guard against wear and corrosion.

CR_Polished Chrome

The handle is protected by a layer of chrome, forming an excellent barrier against weathering and offering great resistance to wear and tear. The blue-silver colour and perfect shine make this finish particularly suitable for elegant settings. The finish has a 10-year anti tarnish sea air guarantee.

SC_Satin Chrome

The handle is protected by a layer of chrome, forming an excellent barrier against weathering and offering great resistance to wear and tear. The satin finish lends the handle a pleasant tactile quality. The chromed reflections carry a formal connotation suggesting use in a modern setting. The finish has a 10-year anti tarnish sea air guarantee.

EMB_Electro Matt Black

The handle has a layer of matt black chrome. The satin black finish lends the handle a sophisticated quality. The satin black colour carries a progressive connotation suggesting use in a modern setting. EMB is an Australian finish.

BRZ_Dark Bronze (Waxed)

The handle has a layer of chemically treated bronze and wax, forming a living barrier against weathering. The dark rich bronze finish lends the handle a retrospective look and feel. The bronze reflections carry a traditional connotation suggesting use in traditional settings. As a living finish created within Australia, it's bronze colour changes over time and by production batch.

SUPERINOX FINISHING

With Superinox, a polished or satin-finish chrome handle is coated with an ulterior layer of metal (superfinishing) under high vacuum. Vacuum metallisation is extremely hard and durable. Nanocomposites of metal determine the specific colour of the surface and protect it from wear, scratches and aggressive substances such as humidity, sweat, salt spray, temperature swings and ultraviolet rays.

IB_Superinox Brass

A practically eternal finish, for its pleasing looks as well as its durability. While the tonality is a prestigious one of rich brass, the qualities of endurance and toughness are the very elevated ones of Olivari Superinox finishes. The finish has a 30-year anti tarnish sea air guarantee.

ISB_Superinox Satin Brass

This combination of the classical softness of satin brass and the modernity of the Superinox finish makes for durability and consistency of colour over time. The finish has a 30-year anti tarnish sea air guarantee.

IBN_Superinox Bright Nickel

This shiny finish has a warm, elegant colour of nickel plus the advantages of remaining unaltered over time and not causing allergic reactions. Suitable for comfortable and sophisticated settings. The finish has a 30-year anti tarnish sea air guarantee.

ISN_Superinox Satin Nickel

The satin finish offers full expression to the refined colour of nickel. It exalts and makes more precious the shapes of the handle to which it is applied. The finish has a 30-year anti tarnish sea air guarantee.

IS_Superinox Satin Stainless

The colour is that of stainless steel, but the surface hardness obtained with the VM process is far superior. Its elevated toughness makes this a high-tech finish particularly suited to use on doors in high-traffic locations. The finish has a 30-year anti tarnish sea air guarantee.

ISC_Superinox Satin Copper

This innovative and expressive superfinish represents a taste for strength, character and openness to the new. Suited for refined and sophisticated settings. The finish has a 10-year anti tarnish sea air guarantee.

ISBRZ_Superinox Satin Bronze

This new colour of superfinish is innovative yet timeless. The allure of the past and the memory of its beauty are united with faith in the new and its projection into the future. The finish has a 10-year anti tarnish sea air guarantee.

IA_Superinox Anthracite

This is a dark grey with metallic reflections, making for a very modern and exclusive finish. Its hardness is superior to chrome, and its aesthetics are suited to high-tech settings. The finish has a 10-year anti tarnish sea air guarantee.

Superinox finished hardware is guaranteed not to pit, rub, tarnish, fade or lose its lustre even in sea air & high usage environments.

Not even 316 marine grade Stainless Steel can provide this level of protection.

316 is stainLESS not stainFREE.

Galvanic finishes



CR - Polished Chrome



SC - Satin Chrome



EMB - Electro Matt Black



BRZ - Bronze Waxed
(dark bronze waxed. This is a living finish & will tarnish)

SuperInox finishes



IB - SuperInox Brass



ISB - SuperInox Satin Brass



PBU - Polished Brass Unlacquered



PC - Powder Coat

The Finishes by Olivari of Italy



IBN - SuperInox Bright Nickel



ISN - SuperInox Satin Nickel



IS - SuperInox Satin Stainless



ISC - SuperInox Satin Copper



ISBRZ - SuperInox Satin Bronze



IA - SuperInox Anthracite

Finish Guide

All finishes shown in BLUE come with a 30-year anti tarnish guarantee (30yrg)

All finishes shown in GREEN come with a 10-year anti tarnish guarantee (10yrg)

Bellevue Architectural
954 Glenhuntly Road
Caulfield Vic 3162
Ph: +64 (03) 9571 5666
www.bellevuearch.com.au
info@bellevuearch.com.au



PLACCHE



olivari.com.au

Concept and graphic

Marco Strina

Photo

Sauro Sorana

Pre press

Up studio_Milano

Bellevue Architectural

Printed in Australia Bellevue
Architectural 2020

Olivari B. spa

Via Giacomo Matteotti, 140
28021 Borgomanero NO Italy

T +39 0322 835080

F +39 0322 846484

olivari@olivari.it

www.olivari.it

Bellevue Architectural

954 Glen Huntly Road

Caulfield South VIC 3162

T +61 (0)3 9571 5666

Info@bellevuearch.com.au

www.bellevuearch.com.au

We reserve the right to modify and discontinue any products, without prior notice. Olivari declines all responsibility for any misprints and / or errors in the catalog. All rights reserved © Olivari B. s.p.a. OLIVARI products are registered and patented in Europe and many countries extra UE. In order to avoid counterfeits, we laser-mark all the door handles both with the OLIVARI logo on the lever and with the identification code of the lot and the date of production on the neck. This indelible marking certifies that the product is made in ISO 9001 and allows traceability. We invite customers to beware of "OLIVARI type" products and to buy only "OLIVARI" original products.

