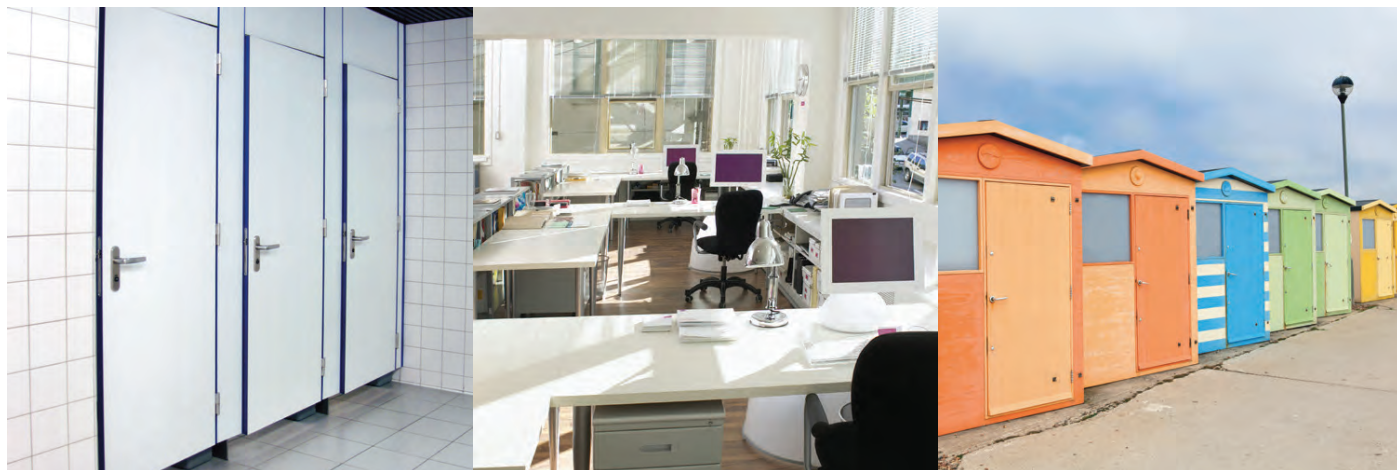


# Spring Hinge BIST150 Functional Data

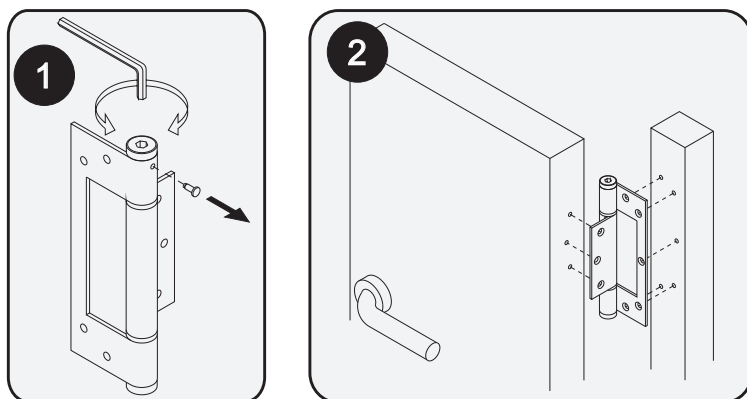
## Quick-Fix Interleaf Aluminium & 304 Stainless Steel



Ideal as an alternative to a traditional door closer for commercial and domestic aluminium framed swing doors.

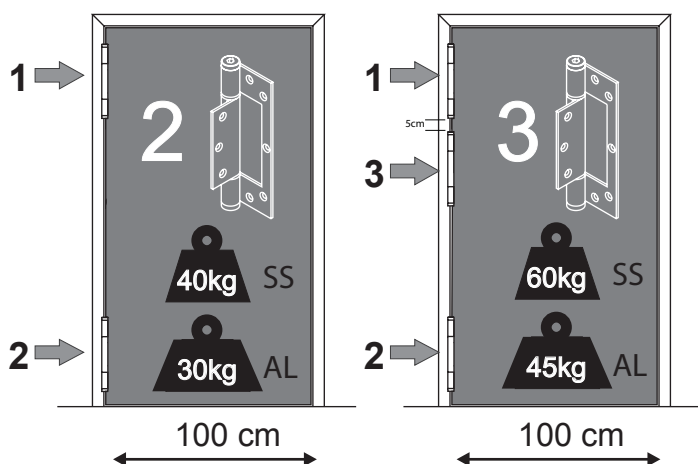
### Installation of the BIST150:

Designed for doors that fit the following profile: aluminium framed doors and jambs, steel jambs, doors where there is little clearance between the door and the jamb.

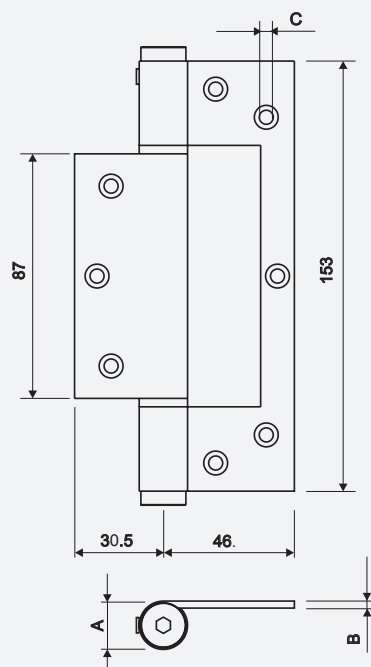


Easy 2 step installation process. Step 1, insert allen key into head and turn to set tension re-insert the pin. Step 2, screw or rivet the hinge to the door and door jamb. Easy. You're done.

### Number of hinges required per door:



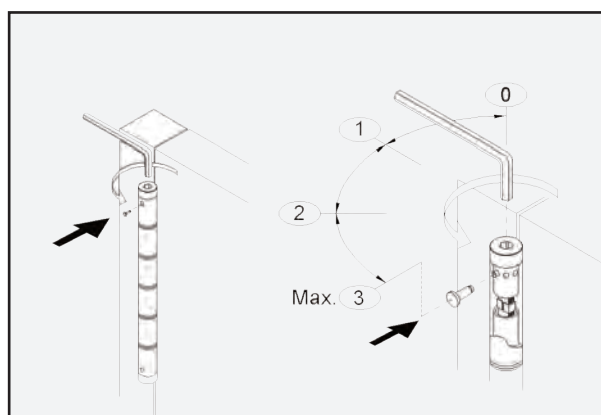
### Dimensions of the BIST150:



All dimensions in millimeters. The BIST150 has been designed with its appearance in mind. Small & Slim.

Mod.	A	B	C
ST 150 Aluminium	Ø16	2.5	Ø5
ST 150 Stainless	Ø17	2.5	Ø5.5

### Adjustment of the BIST150:



Multiple adjustment points for increasing or decreasing the spring's tension. Simple function, pull pin, turn head with allen key and replace pin. No need to remove the door.

# Spring Hinge BIST150 Functional Data

## Quick Fix Interleaf Aluminium & 304 Stainless Steel

Automatically closing an *aluminium* framed door is now so much easier.

Now there is no longer a need for unsightly door closers for **aluminium framed** doors, or doors with steel jambs, the BIST150 single action quick fix spring hinge is designed to automatically close doors with a subtle visual appearance. Its sleek, stylish and simple design makes it ideal for all environments. Made in Spain by Justor, the BIST150 is highly functional and adjustable, ideal for all doors that weigh up to 60kg. (refer to the weight chart).

The BIST150 has been specifically designed as a quick fix hinge for **aluminium framed** self-latching doors, including doors with **steel or aluminium jambs**. Also practical for doors where there is very little gap between the door and the jamb as the hinge is only **2.5mm** thick.

Simplistically, the spring acts as a door closer would, by bringing the door back to the closed position once opened. Made out of AISI 304 stainless steel or Aluminium the BIST150 single action spring hinge is ideal for internal or external applications in any environment. Once installed the BIST150 spring hinge can be adjusted to bring the door back quickly or slowly.

The Justor BIST150 has three (3) tension settings for detailed control of door closure speed and adjustments can be made without having to take the door down, alternatively, by reversing the tension on the BIST150, the spring can be set to assist in the opening of the door.

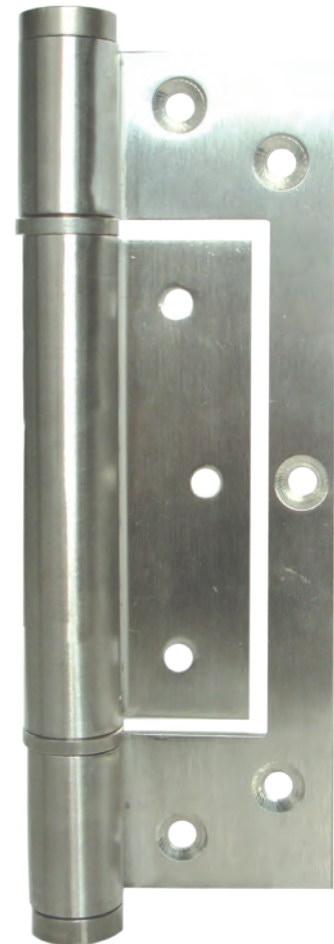
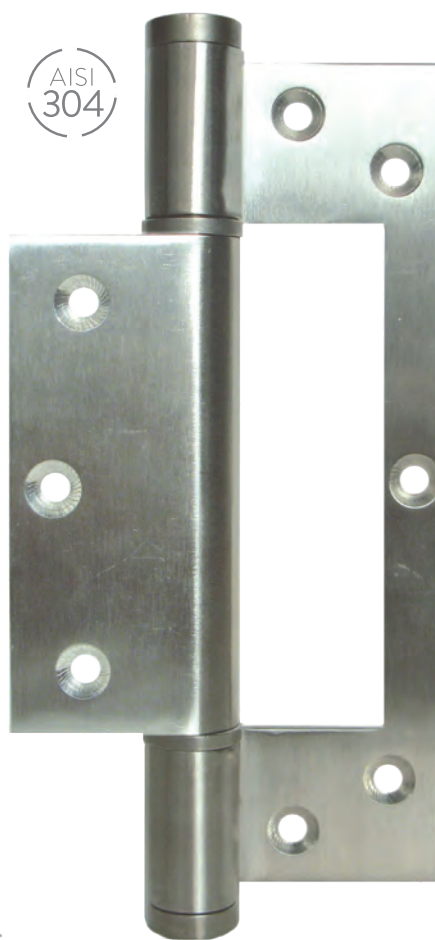
An added advantage of the BIST150 is its appearance; it is sleek with clean lines. Cost effective and highly functional, it is a real and effective alternative to traditional door closers and other closing solutions. The BISA120 spring hinge comes with a 2 year manufacturer's Guarantee and is available in a range of finishes and base materials. Made to exacting European standards in Spain by Justor, the BIST150 is a maintenance free solution – no periodic greasing or adjustments required, just 1 drop of oil in the top cap once a year.



Anodized  
Black



Aluminium  
PC White



### Order Codes:

#### Base Material: Aluminium

- BIST150BLK – Anodized Black
- BIST150WHT – Aluminium PC White

#### Base Material: Stainless Steel 304

- BIST150SS – Stainless Steel

#### Non Sprung Kit (1 kit per Knuckle)

- BINSKSS – @ x Caps and pin 304
- BINSKCR – @ x Caps and pin Chrome
- BINSKAB – @ x Caps and pin Black

### BIST150 Quick Facts:

- Spring Resistance 500,000 cycles
- Aluminium & Stainless Steel AISI 304
- Resistant to Extreme Climatic Conditions (Cold and Humidity)
- Maximum resistance to bending
- Up to 60kg in Door Weight
- Torsion Spring not a Coil Spring
- Variable Closing Strength (speed)
- 90° or 180° Working Aperture
- Solid and Stylish Design
- For Wood or Aluminium Doors
- Slim Profile vs. Bulky Door Closer
- Quick & Simple Installation
- Manufactured in 100% in Spain
- Max Door Thickness 40mm
- 2 Year Manufacturer's Guarantee