

BAH007 Mototronic Multi-point Hook Lock With Escape Mode

Electronic auto-locking. Unlock with lever & electronics - locked unless unlocked

3 separate points of locking on a door is always going to be stronger than one.

Adjustable Striker Kit



Latch & Dead Bolt



Top & Bottom Latch Bolt



An Ideal Electronic Self-Engaging Lock For Doors that require Internal Escape Mode Functionality

Security - In today's chaotic and security conscious world, securing a door is a serious consideration. The door locking hardware select must provide a sense of assurance and comfort that our security requirements have been met, and our expectations exceeded. The HMB multi-point locking systems have been specifically designed to provide a significantly improved level of security for doors up to 3200mm high that need to be securely locked.

Placement

- Used internally or externally where a door needs to have electronic access control to lock & unlock the door securely including providing passage access functionality.
- Due to the upper and lower hook bolts, the BAH007 is ideal for doors where weathering may impact a door and cause warping of up to 8mm.
- Ideal for front doors, shops and offices.

Operation

- On closing the door, the lock fully engages the top and bottom hook bolts and throws the centre dead bolt automatically. Importantly this lock can be **electronically opened**.

When closed in the fully locked position, the door can be opened on the outside and inside electronically via a keypad or push to release type button. If a lever is

used internally instead of a pull handle, Escape mode is always active. Simply pull the lever down and exit.

- The lock can always be operated mechanically via the cylinder on both sides in case of a power failure.
- BAH007A** - Designed for external electronic entry via an access controlled device. Used with a pull handle externally and an operational escape mode handle internally. Escape Mode.

This version of the lock can be switched to "latch mode" electronically. This enables the withdrawal of the top and bottom hookbolts which reduces the strain on the lock when using the internal lever.

- BAH007B (Left Hand) & BAH007C (Right Hand)**

By electronically switching the lock to "latch mode" you are able to unlock

an external lever keeping the internal handle in escape mode. This function enables the withdrawal of the top and bottom hookbolts, reducing the strain on the lock when using the levers.

Perfect when you want to use the levers for normal passage usage.

Added Value -

- The great advantage of a Mototronic Multi-point Lock is that your door is locked 24 hours a day. You no longer need to worry if your door has been deadbolted.

The door remains fully locked, even during a power cut. In case of a power outage the door may be opened by using the key. (not recommended for daily use).

This lock can be used with existing access control systems, management systems and/or fire alarm systems.

- Suitable for emergency doors
- Suitable for different access systems
- Two adjustable latch mode functions
- Automatic (electronically) permanent locking
- Reliable and fast thanks to two powerful motors

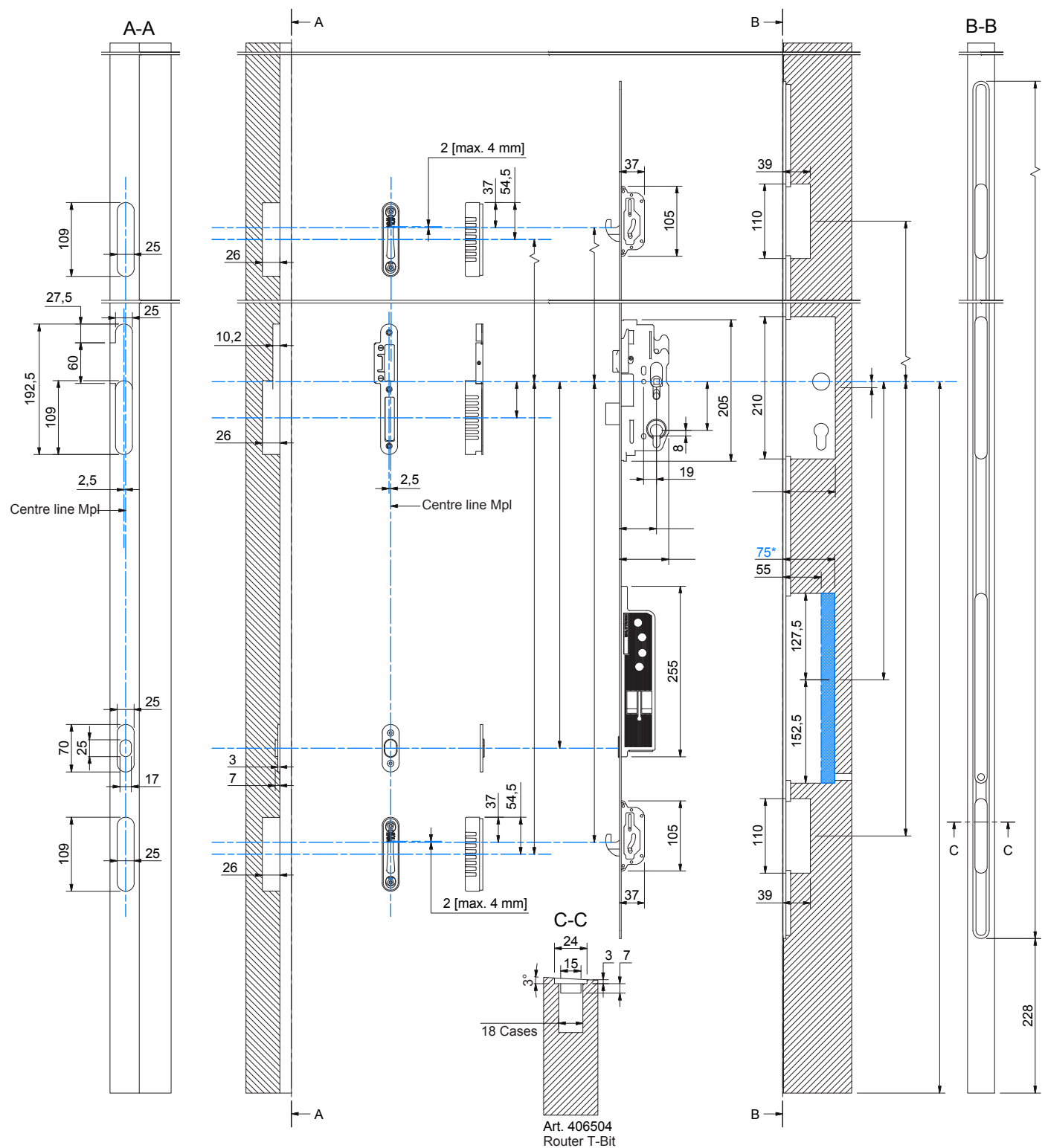
BAH007 Quick Facts

Door Height	Suitable for doors up 3200mm
Locking	2 x Hook Bolts & 1 x latch, 1 x Dead Bolt & Escape Mode
Adjustable Striker	Ideal for any future door movement
Back Set	55mm
Narrow Lock Body	Suitable for Narrow Stiles
Opening Direction	Non-Handed Bi-Directional (Mod. A only)
Manufacturing Base	100% Made in The Netherlands
Reliability	2 Year Manufacturer's Guarantee

BAH007 Order Codes

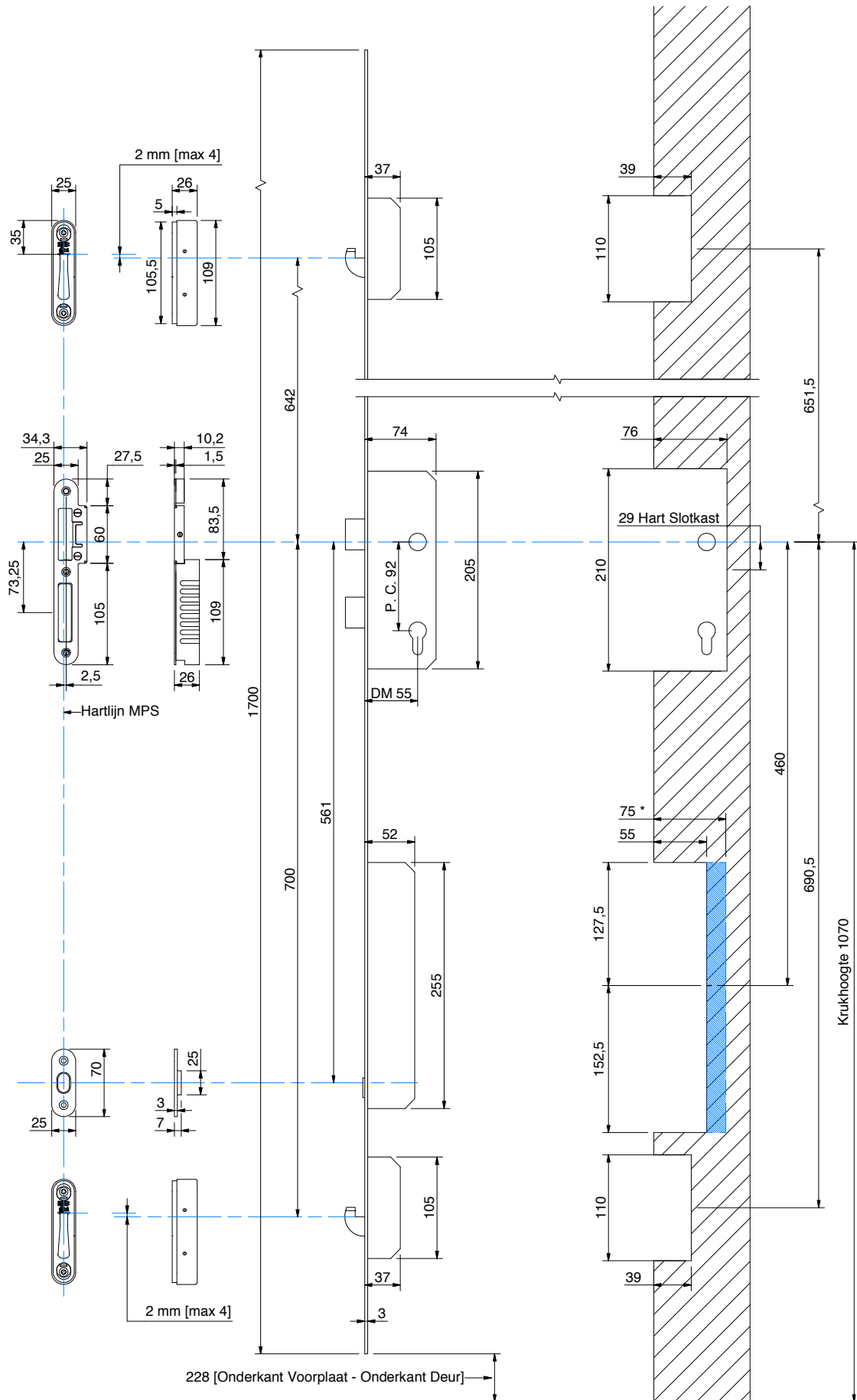
BAH007A	Galvanised Stainless
BAH007B (LH) & C (RH)	Stainless Steel
CMP for 2nd Leaf	See page 13
Jigs & Templates	Call for pricing

BAH007A Measurements



Detailed technical and electronic information available upon request.

BAH007B & C Measurements



Detailed technical and electronic information available upon request.