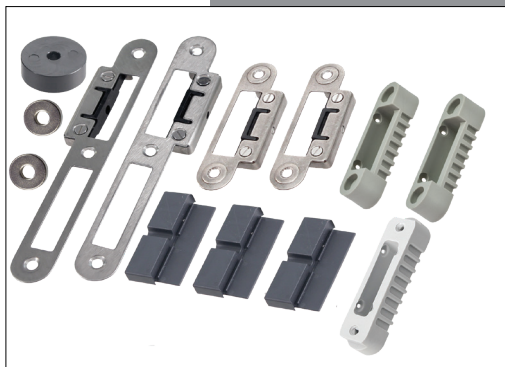


BAH009 Multi-point Auto-Engaging Locking System

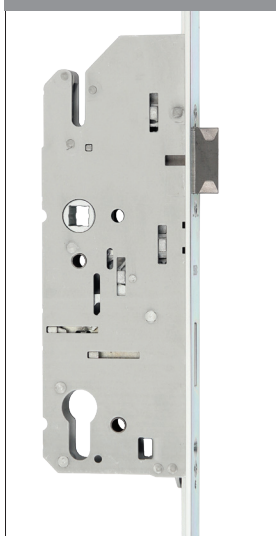
Open & close with lever or key; lock with key - Locked unless unlocked

3 separate points of locking on a door is always going to be stronger than one.

Adjustable Striker Kit



Latch & Dead Bolt



Top & Bottom Latch Bolt



Ideal Lock For Entrance Doors With An Operational Handle On Both Sides Or Fixed External.

Security - In today's chaotic and security conscious world, securing a door is a serious consideration. The door locking hardware selected must provide a sense of assurance and comfort that our security requirements have been met, and our expectations exceeded. The HMB multi-point locking systems have been specifically designed to provide a significantly improved level of security for doors up to 3200mm high that need to be securely locked.

Placement

- An ideal lock for front doors or security doors within a residential or commercial environment.
- Designed for a door that is using an external pull handle and an operational internal lever or operational lever on both sides of the door.

Operation

- On closing the door, all 3 latches self-engage, (the top and bottom latch lock into position). To dead bolt the door, turn the key and the center dead bolt is thrown.
- The door is now locked at 3 separate points ensuring the highest level of security. The door is secure and tightly sealed which reduces drafts.
- When using the lever, when engaged the handle pulls back all 3 latches allow the door to open. Only the key will withdraw the dead bolt.

Lock Usage Configurations

- **Config 1.** Using a fixed pull handle or dummy handle on the outside and an operational lever handle on the inside:

When closed, the door is effectively locked from the outside, the inside lever is fully operational and you can open & close the door as you please.

Once you throw the dead bolt with the key this locks off the internal lever, and the door becomes deadbolted.

- **Config 2.** Using an operational lever handle on both sides of the door.

When is closed, the door is fully latched from both sides (in all 3 positions).

You can open and close the door at will from both sides until you throw the centre deadbolt by use of the key on either side of the door. Both levers become inactive (locked), the door is now deadbolted.

Added Value -

- **Extra Strength** - In the top and bottom striker, behind the striker plate, there are magnets. When the door closes the top and bottom dead latching bolt shoot out an extra 10mm and lock creating a secure dead locked environment.

- As a result of the BAH009's clever design, you can use either a fixed or operational handle on the outside of the door and an operational handle on the inside.

- Loose locking, rattling doors, humidity and general weathering on doors which can cause door shrinkage and /or swelling, are no longer a problem due to HMB's adjustable striker kit.

By adjusting the HMB striker; these problems are instantly resolved; providing security and peace of mind for the long term.

- Because the lock features a small shallow lock case; less timber is routed from the door than a traditional lock body.

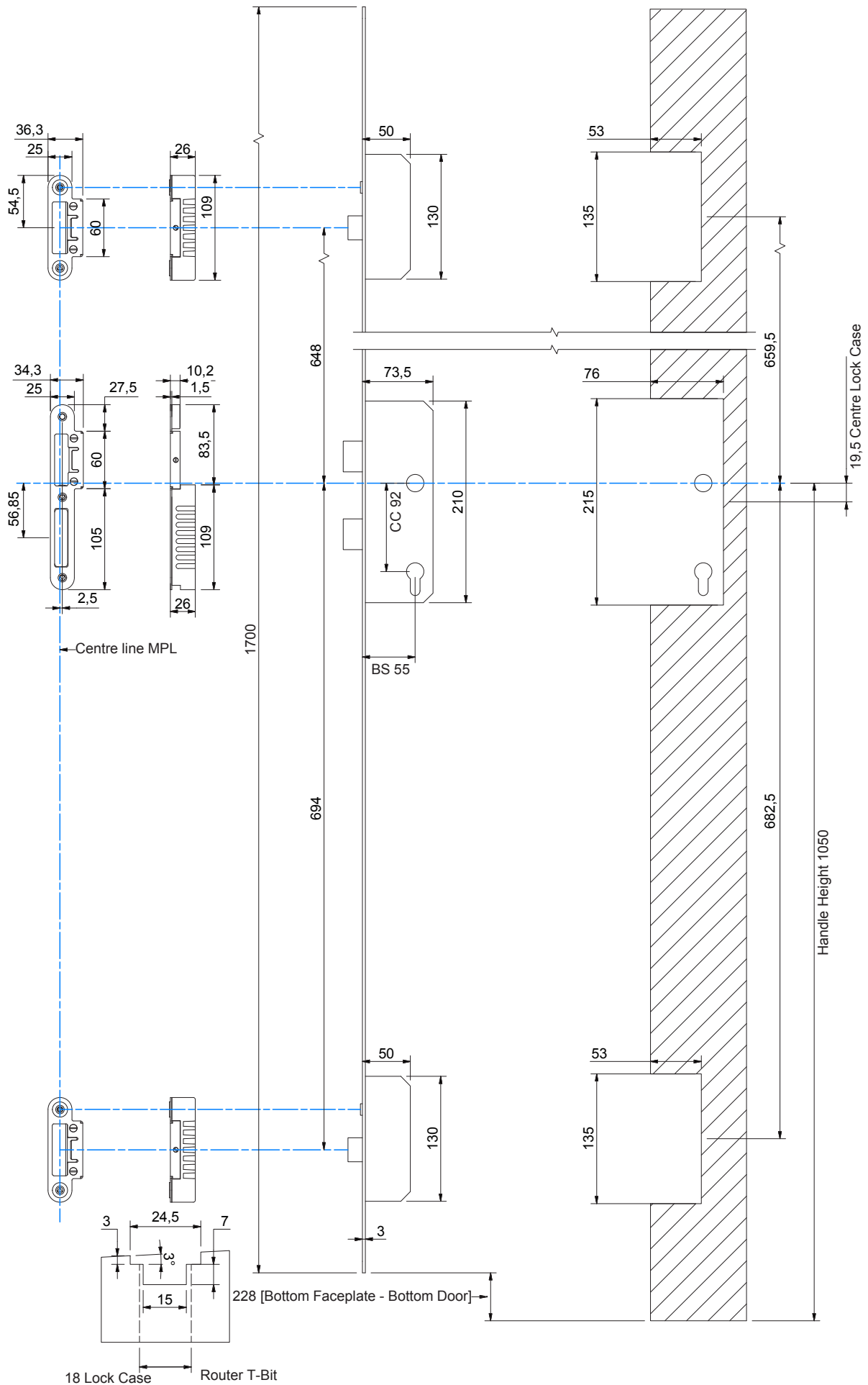
BAH009 Quick Facts

Door Height	Suitable for doors up to 3200mm
Locking	2 x latch bolts & 1 x Dead Bolt, 1 x Latch
Adjustable Striker	Ideal for any future door movement
Back Set	55mm standard
Narrow Lock Body	Suitable for Narrow Stiles
Opening Direction	Non-Handed Bi-Directional
Manufacturing Base	100% Made in The Netherlands
Reliability	2 Year Manufacturer's Guarantee

BAH009 Order Codes

BAH009	Galvanised Steel
CMP for 2nd Leaf	See page 13
Jigs & Templates	Call for pricing

BAH009 Measurements



Detailed technical and electronic information available upon request.