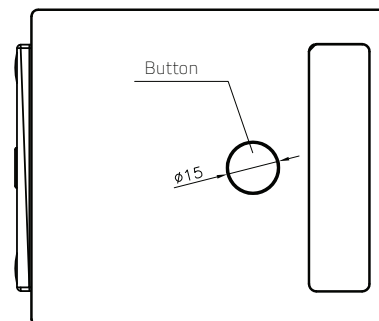
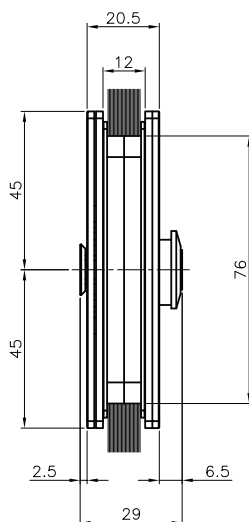


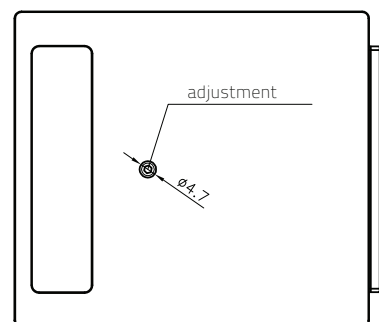
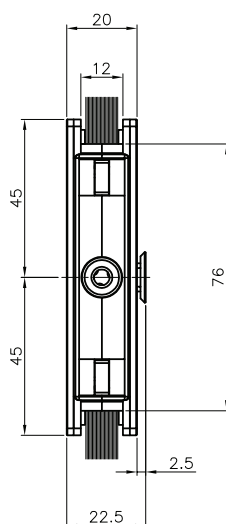
- 100% Made in Italy
- Self regulating strike
- Tested to 500,000 cycles
- Micro-movement release
- Internal anti-panic function
- Available in Multiple Finishes
- Designed for sliding glass doors
- 2 year manufacturer's guarantee
- Suitable for internal & external locations
- Suitable for high frequency opening doors
- Suitable for residential & commercial locations

Technical drawing of the front view of a rectangular box. The overall dimensions are 105.5 (width) and 90 (height). The main body dimensions are 101 (width) and 70 (height). The box has a 4.5 thick right side and a 5 thick bottom. A 17 wide section is located at the bottom left. A vertical rectangular feature is on the left side. A circular feature on the right is labeled 'Lock' and 'adjustment'. The circular feature has a diameter of $\varnothing 22$ and a hole with a diameter of $\varnothing 4.7$.



Technical drawing of a rectangular plate with the following dimensions and features:

- Overall width: 105.5
- Overall height: 90
- Distance from left edge to inner rectangle: 4.5
- Distance from left edge to button center: 101
- Distance from bottom edge to button center: 83.5
- Distance from right edge to inner rectangle: 17
- Distance from right edge to button center: 5
- Inner rectangle width: 83.5
- Inner rectangle height: 70
- Button diameter: $\phi 15$
- Label: "Button" with a leader line pointing to the button.



all dimensions in mm

BGT | T-Lock Pro Functional Data

Self-Regulating Glass Sliding Door Lock

Architecturally Stylish Sliding Glass Door Lock



Internal View



External View (No cylinder)



External View (With cylinder)

The T-Lock Pro sliding glass door lock from GFS of Italy is revolutionary in design & only 20mm thick. Incorporating a self-guiding magnetic lock at its core, it is sleek, stylish and quiet vs. other glass door locks.

Made out of 304 Stainless Steel and 100% made in Italy; they have been designed so the glass door can fully recess into a pocket to provide maximum opening space.

Self-Regulating Locking System

If the glass door moves or wobbles whilst engaging into the closed position, the magnetic self-engaging lock caters for the misalignment. There is no need for multiple closing attempts.

Quick Release Anti-Panic Opening System

Based on its design, the T-Lock Pro has a cut out in its steel face in the shape of a flush pull. By using the flush pull you are able to open and close the door. What's unique about the flush pulls are their ability to move independently of the glass.

Once the door is closed, it's locked... with a micro movement of the flush pull on either side the door automatically unlocks.

Glass on Timber or Glass on Glass

The T-Lock Pro can be used for glass sliding doors closing onto timber jambs or by using the Glass Striker Kit, glass sliding door onto glass.

Lockable from Both Sides

Based on your operational requirements there are 2 versions of the T-Lock Pro:

1. Privacy - Slide the door closed and press the inside button; the door locks from the outside. Using the micro movement function on the inside; the door unlocks and opens. An external emergency release is built into the system.

2. Key Lock Set - Sliding the door closed, then using the key on the outside locks the door from the outside. From the inside, just push the button for door release or use the key on the outside to unlock.



Stylish, Architecturally
Designed Magnetic Lock/
Latch for Sliding Glass Doors.

BGT | T-Lock Pro Order Codes | Used on Sliding Glass Doors

Passage Set Glass to Timber		Lock Set Glass to Timber		Glass Striker Kit Glass to Glass	
BGT3810SS	Satin Stainless Steel	BGT1810SS	Satin Stainless Steel	BGT0810SS	Satin Stainless Steel
BGT3812PS	Polished Stainless Steel	BGT1812PS	Polished Stainless Steel	BGT0812PS	Polished Stainless Steel