

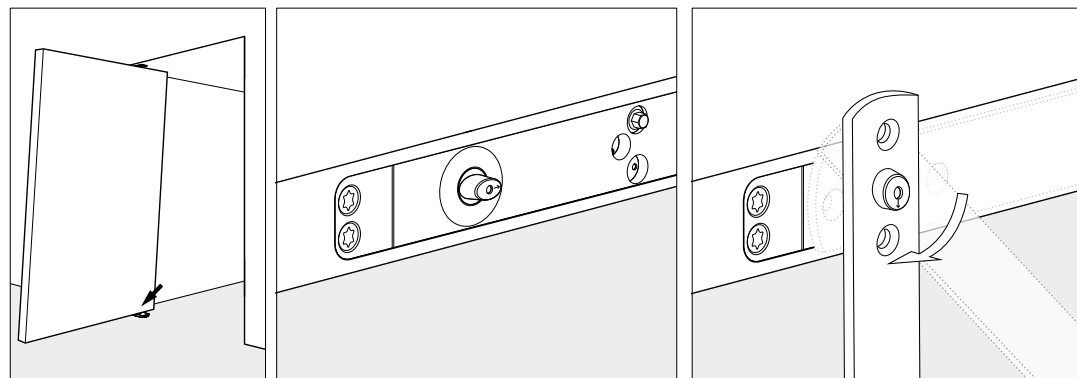
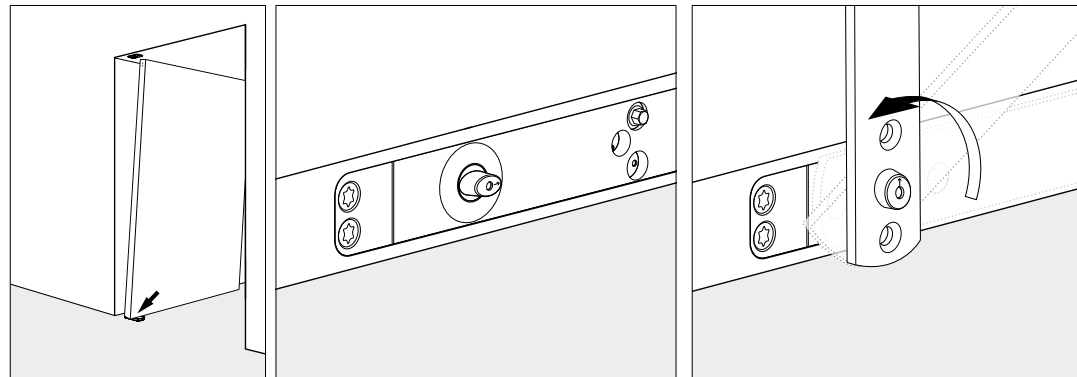
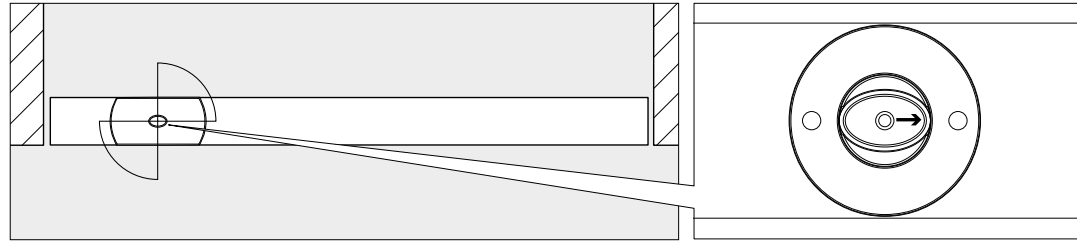
# FritsJurgens® SYSTEM M AXLE WRENCH

When installing a door fitted with System M, it is very important that the door is installed in its open position.

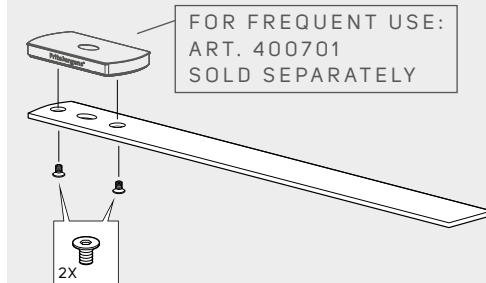
This can be accomplished by using the Axle Wrench to rotate the oval spindle in the bottom of the System M 90 degree, pointing the arrow toward the direction the door will be opening (0° position).

In case of frequent use it is possible to mount the floor plate (art. 400701) on the Axle Wrench.

## FOR TURNING THE SPINDLE / ?



## ORDER INFORMATION



- FJ500503**  
SYSTEM M AXLE WRENCH  
INCLUDES:
- 1x AXLE WRENCH
  - 2x M6 FIXING SCREWS