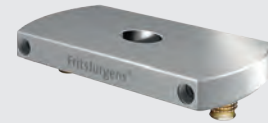
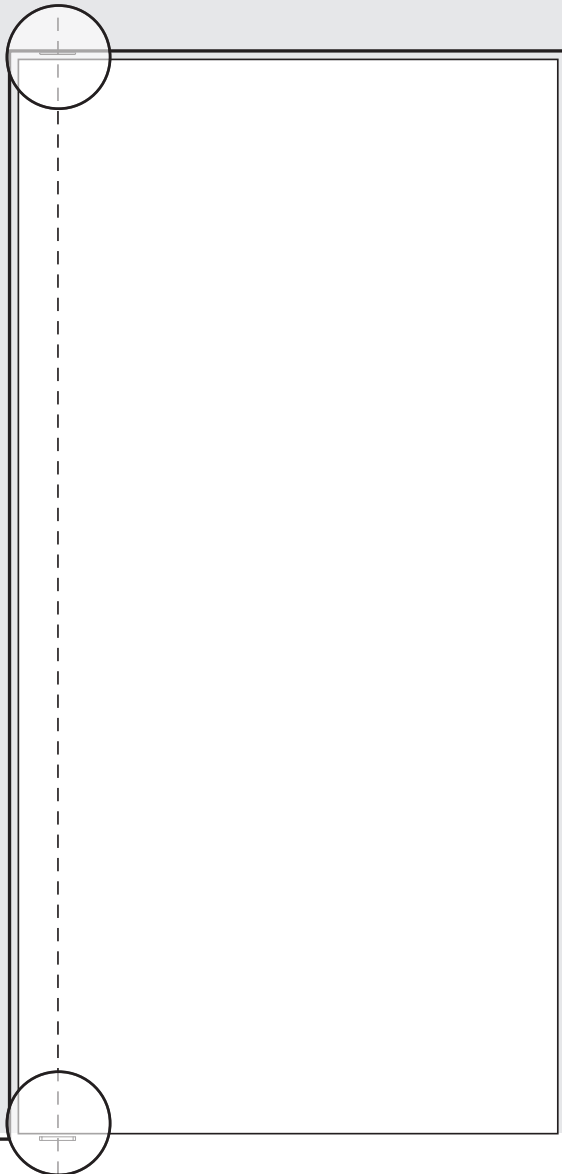
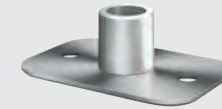


DESIGN OPTIONS SYSTEM M+/M



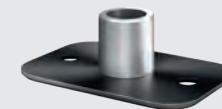
Rectangle floor plate
(400711) Stainless steel
(Series 420) 80 x 40 x 9 mm



Ceiling plate (300352)
Stainless steel (Series 420)
60 x 40 x 17 mm



Rectangle floor plate
(400712) PVD black
80 x 40 x 9 mm



Ceiling plate (300353)
PVD black
60 x 40 x 17 mm

The floor plate is available in two finishes and shapes: brushed stainless steel (Series 420) and PVD black and can be obtained in a round and a rectangular version. The floor plates by FritsJurgens are made of solid tempered steel and therefore fully scratch resistant. The ceiling plate is available in brushed stainless steel and black as well and can be obtained in the rectangular version only.

FritsJurgens by Bellevue Architectural | +61 3 9571 5666 | info@bellevuearch.com.au | www.bellevuearch.com.au