

# Athmer Schall-Ex® L15/30 Installation Instructions



BELLEVUE  
ARCHITECTURAL

## Getting Started

Instructions for single direction pivot doors only.

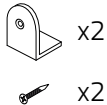
If the seal is not the correct length for the door, please refer to the shortening instructions on page 2 before continuing.

The roller actuator can be pulled out of the unit for installation and maintenance. It will click back into place when reinserted (see image 4).

Start the installation with the actuator removed.

## Included Parts

Fixing kit 5516 contents included.

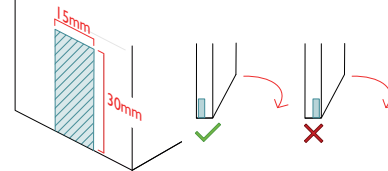


## Website Instructions



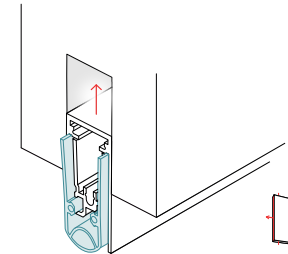
Scan the QR code for the Athmer instructions on our website including video instructions for the shortening and installation process.

1.



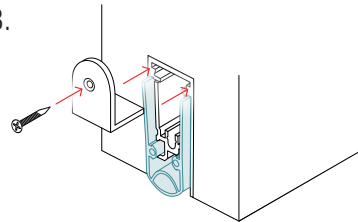
Create a 30mm deep and 15mm wide rebate along the entire length of the door. The rebate should be on the side of the door opposite its opening direction (see image above).

2.



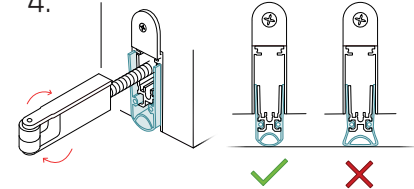
Place the Athmer seal within the rebate so that the actuator side of the seal is on the side closest to the doors pivot point. **Do not use force.** A tight fit can result in pressure on the extrusion of the seal and can affect the functionality and durability of the drop mechanism.

3.



To fasten in place, slide the mounting brackets into the top part of the seal and screw the brackets into the door.

4.



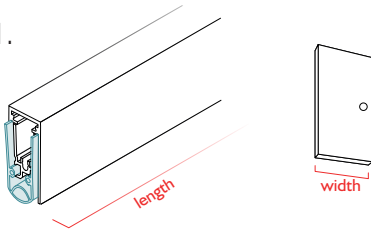
Insert the roller actuator into the seal. The drop distance can be adjusted by pulling out the actuator and rotating it clockwise to drop further and anti-clockwise to drop less. Continue to test and readjust the actuator until the rubber seal is lightly contacting the floor or ceiling along its entire length.

# Athmer Schall-Ex® L15/30 Shortening Instructions



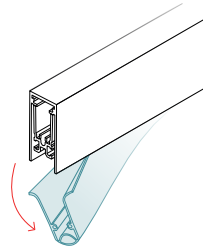
**BELLEVUE**  
ARCHITECTURAL

1.



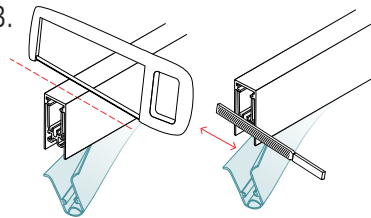
For the best seal, the length of the extrusion needs to be the same as the overall width of your door. Measure the width of your door to find the required length.

2.



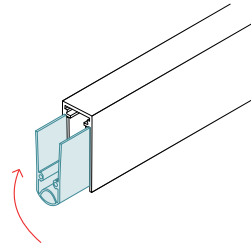
On the **non-actuator side**, pull down a small portion of the rubber seal so that you can shorten the extrusion to the correct length.

3.



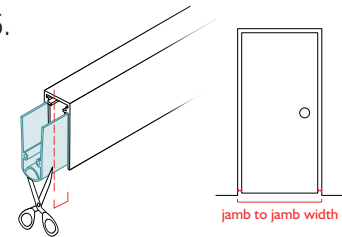
Cut down the extrusion to suit the doors width. Then file back the cut area so that the surface is flat and smooth. If this is not done the rubber may get caught and fail to operate correctly.

4.



Carefully reinsert the pulled down portion of rubber seal back into the extrusion.

5.



Cut back the rubber seal so that the overall length on both ends matches the doors jamb to jamb width.

## Caution

Athmer Drop Seals feature a unique parallel drop mechanism that prevents any dragging of the seal and ensures long-lasting durability.

Caution must be taken to avoid damaging the parallel drop mechanism. **It is important not to completely remove the rubber seal from the inner profile** during the shortening process to maintain the effectiveness of the seal. Proper handling of both the rubber seal and profile is essential to safeguard the drop mechanism and maintain its functionality.