

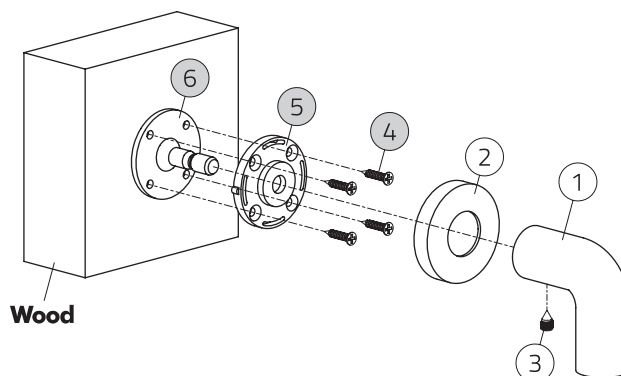
FIXING FOR OLIVARI PULL HANDLES

FIXING FOR PULL HANDLES WITH ROSE

- 1. Pull handle 1x
- 2. Brass rose 2x
- 3. M6 dowel 2x

Fixing:

- 4. Screws for wood 8x
- 5. Nylon detail 2x
- 6. Fixing plaque 2x

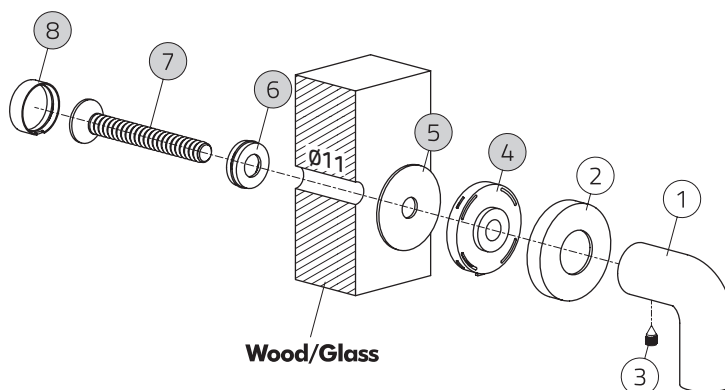


Code article	FR01
Description	Fixing for single pull handle with rose on wooden door
Specifications	Blind fixing

- 1. Pull handle 1x
- 2. Brass rose 2x
- 3. M6 dowel 2x

Fixing:

- 4. Nylon detail 2x
- 5. Rubber washer 2x
- 6. Flared nylon detail 2x
- 7. M10x80mm screw 2x
- 8. Brass cap 1x

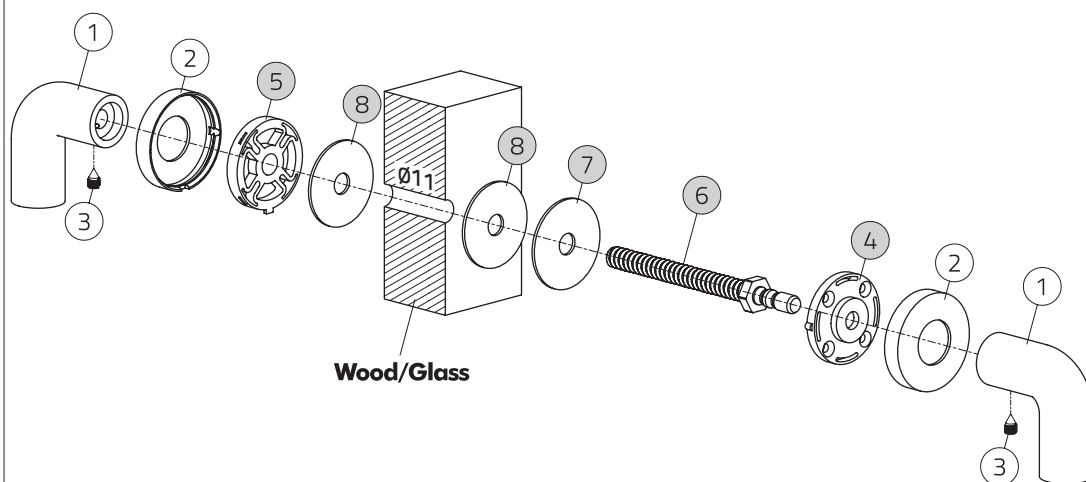


Code Article	FR02
Description	Fixing for single pull handle with rosette: on a wooden door maximum thickness 50mm, on glass door minimum thickness 5mm
Specifications	Bolt-through fixing

- 1. Pull handle 2x
- 2. Brass rose 4x
- 3. M6 dowel 4x

Fixing:

- 4. Thin nylon detail with screw holes 2x
- 5. Thick nylon detail without screw holes 2x
- 6. M10x90mm or M10x130mm tie-rod 2x
- 7. Steel washer 2x
- 8. Rubber washer 4x



Code article	FR03
Description	Fixing for set of back to back pull handles with rosettes: on a wooden door maximum thickness 60mm, on glass door minimum thickness 5mm
Specifications	Bolt-through fixing